

Monmouth School House Stair 2 Works

Photographic Record | 30/01/2024

Job name
Monmouth School - School House

Job number
3502E

Date of issue
30.01.2024

Revision
-

Author
HF

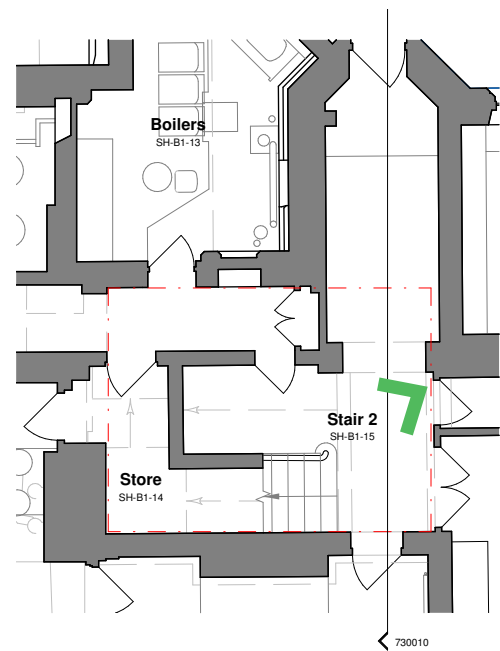
Checked by
JP

Contents

Pre-construction images	4
Existing balustrade on lower ground floor	8
Current Condition	9
Current Condition - First Floor	10
Current Condition - Second Floor	11
Crack Mapping	12

Pre-construction images

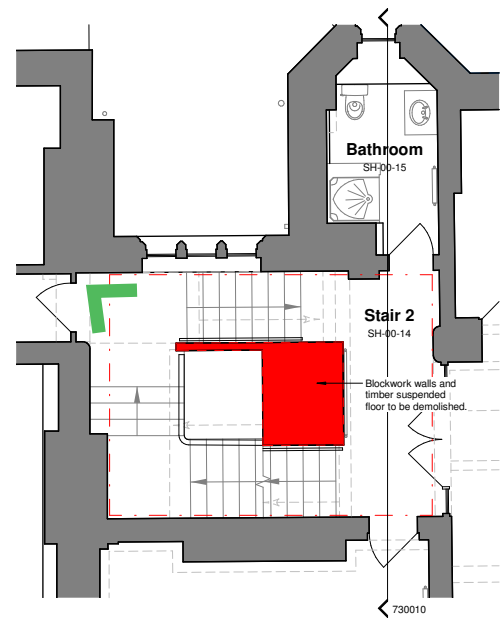
Lower Ground Floor



Lower Ground Floor Key Plan



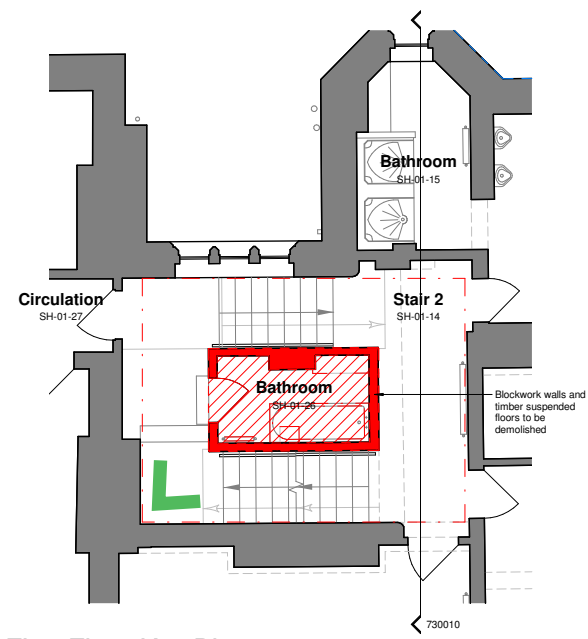
Ground Floor



Ground Floor Key Plan

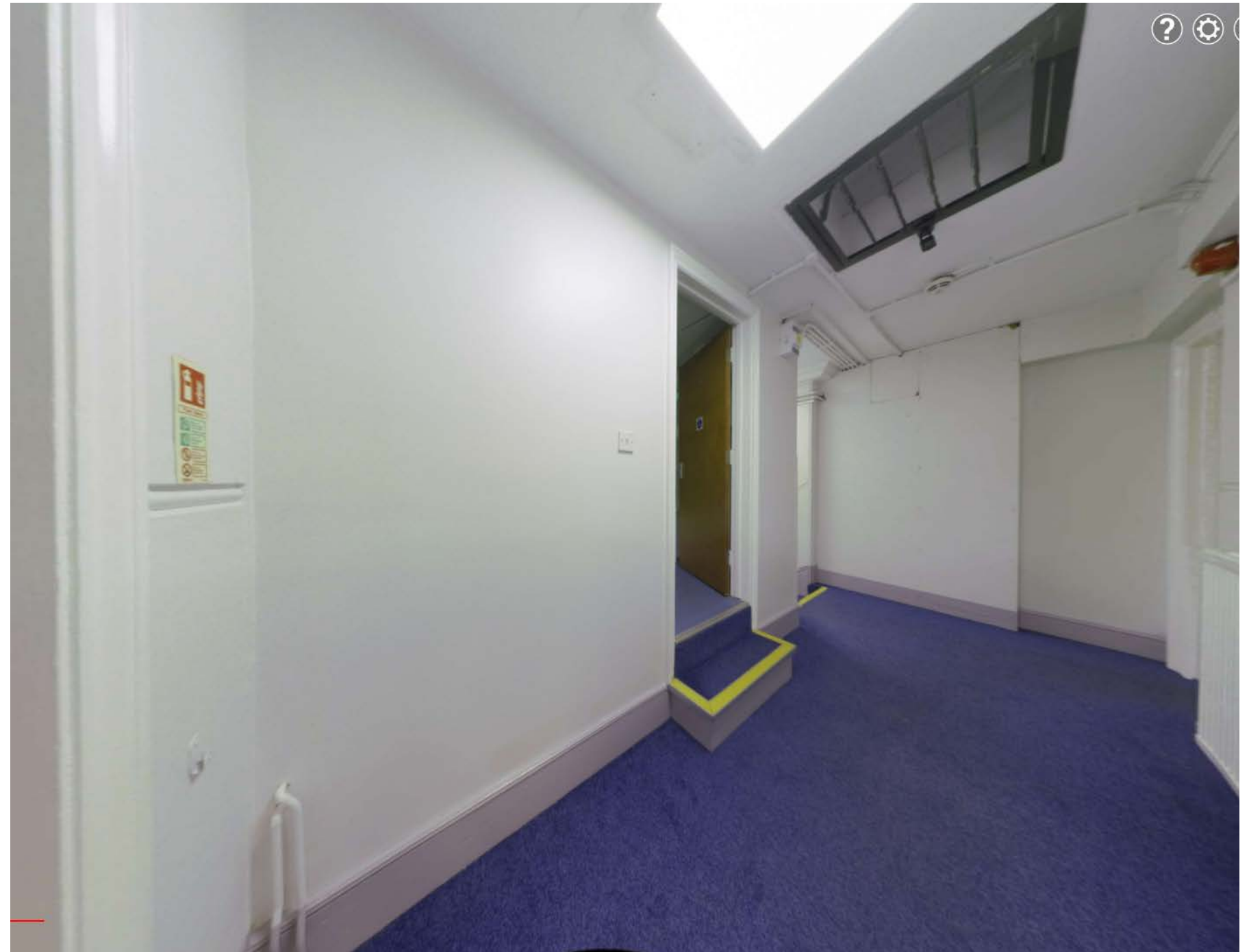
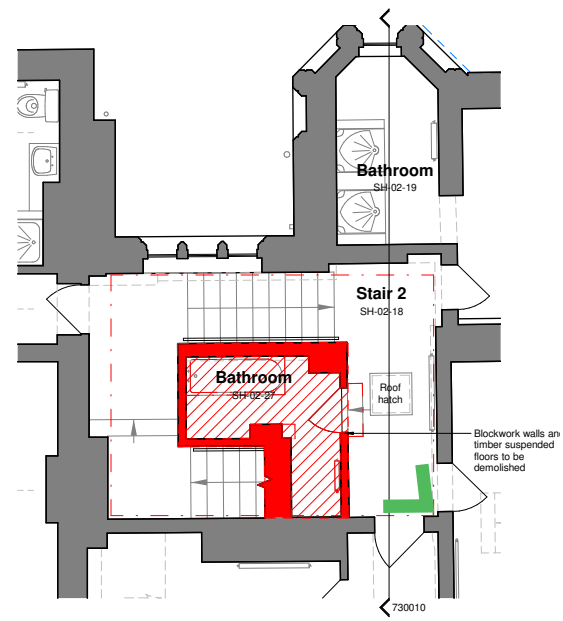


First Floor

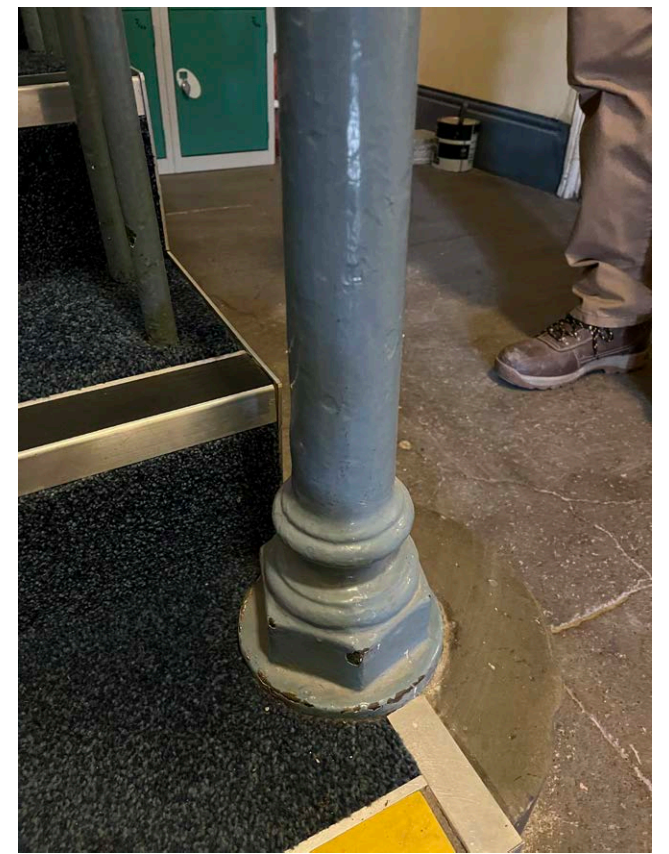
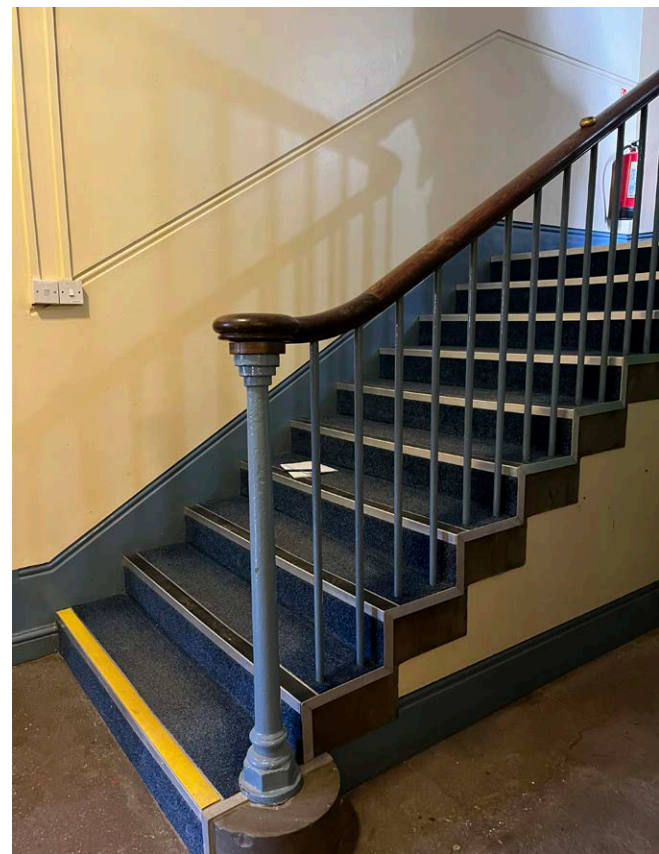
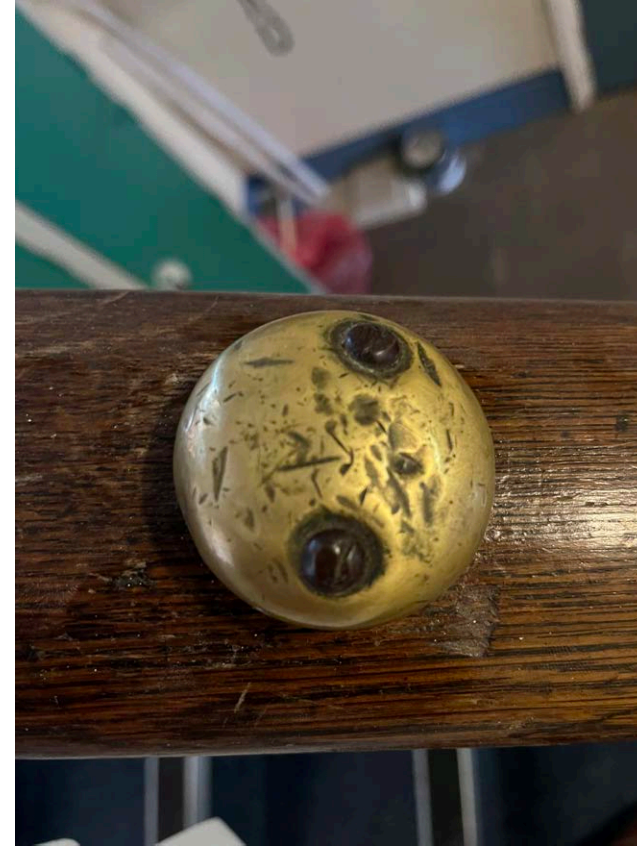
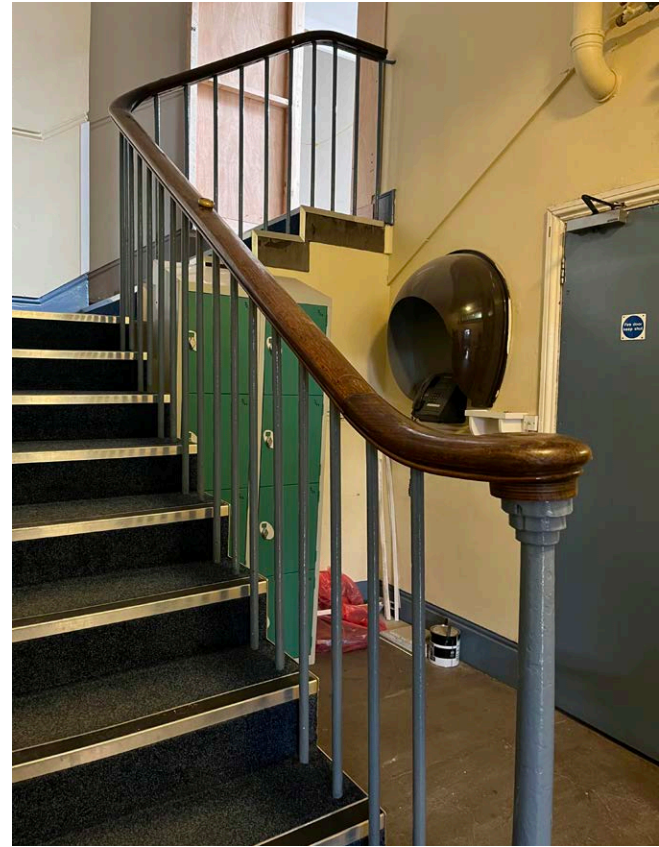


First Floor Key Plan

Second Floor



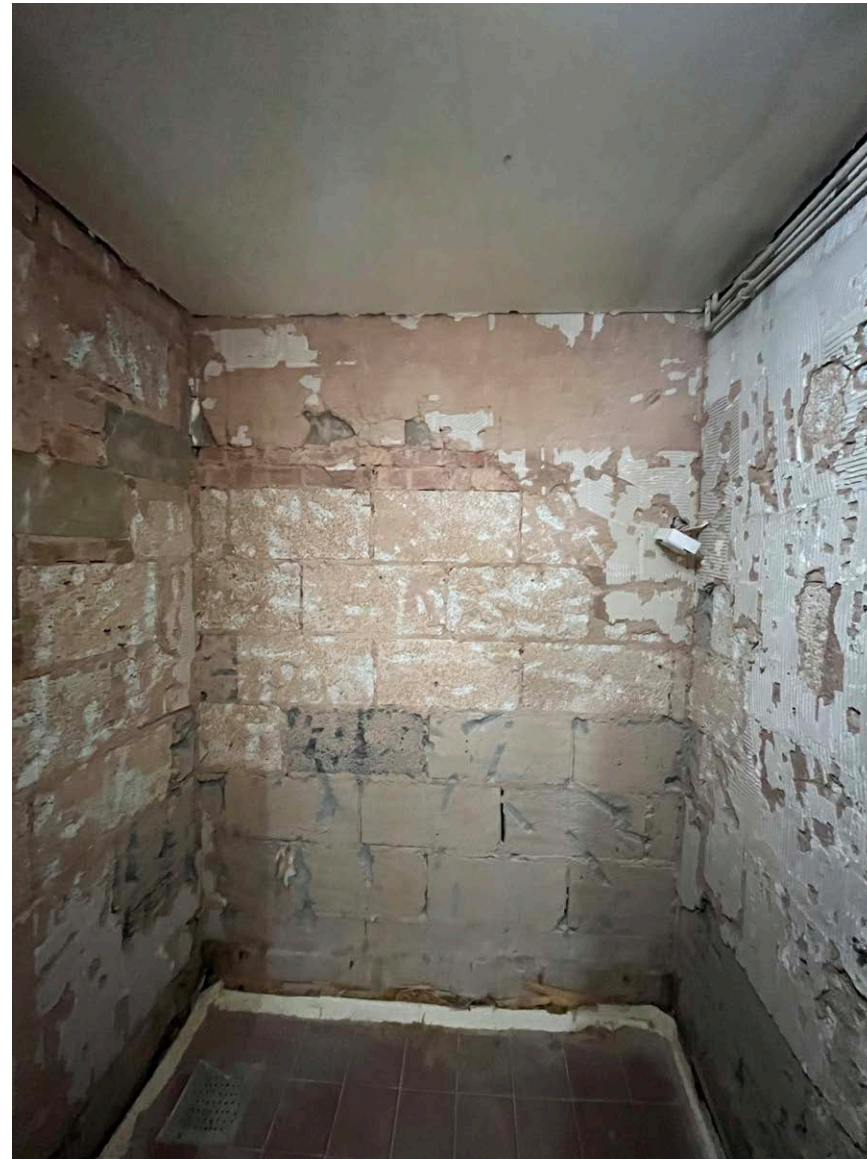
Existing balustrade on lower ground floor



Current Condition



View of existing Stair



View of existing blockwork in bathroom



View of existing cracks to blockwork wall

Current Condition - First Floor

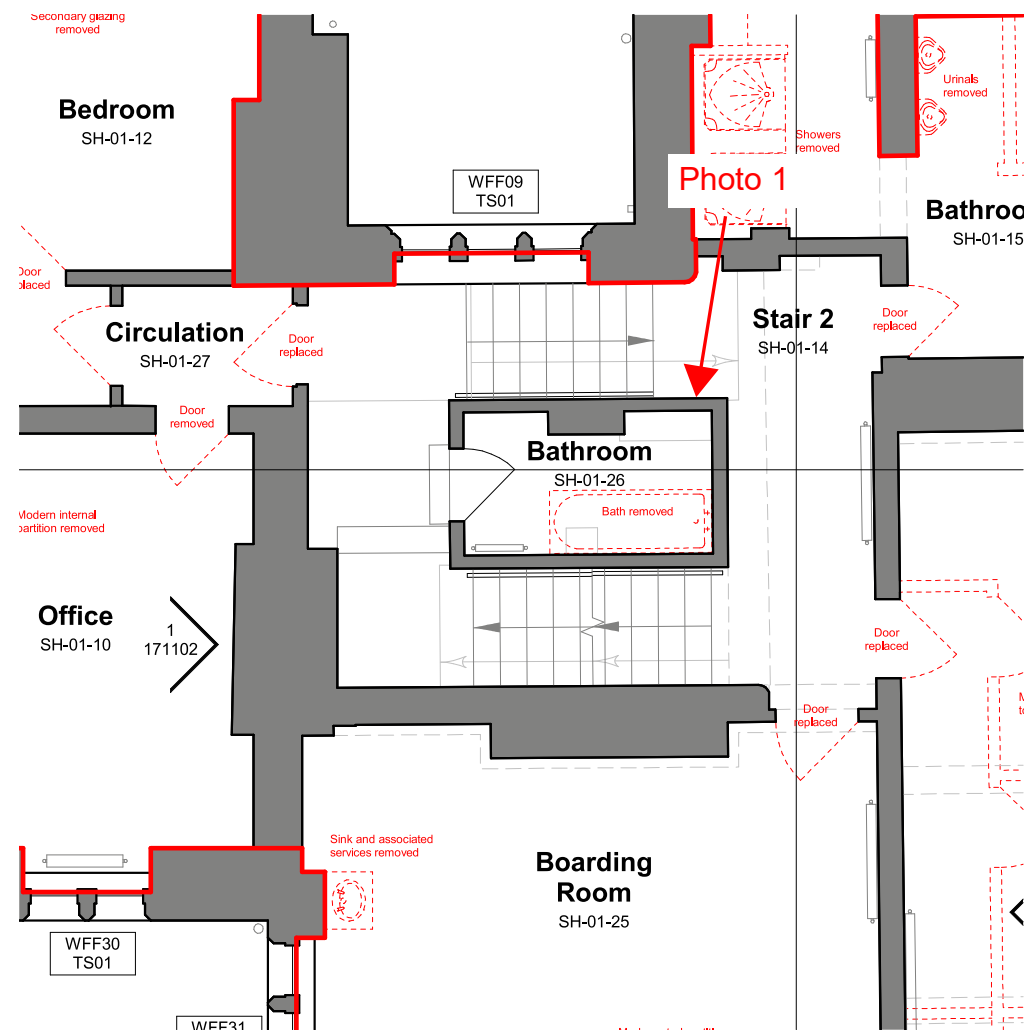
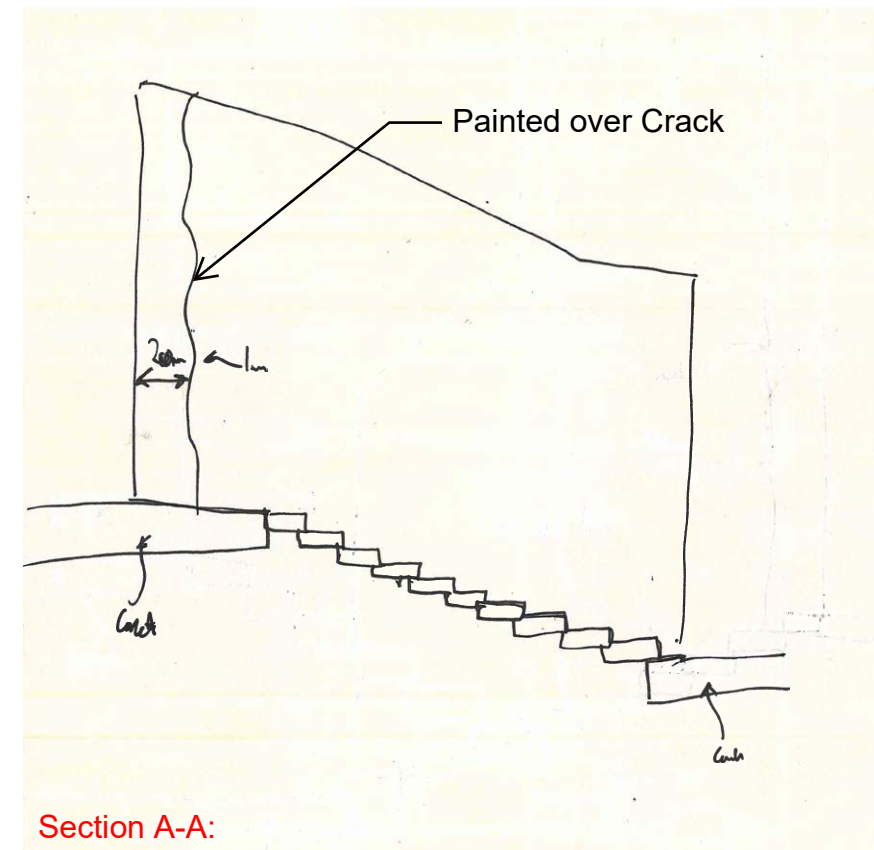


Photo 1:



Section A-A:

Current Condition - Second Floor



Photo 1



Photo 2

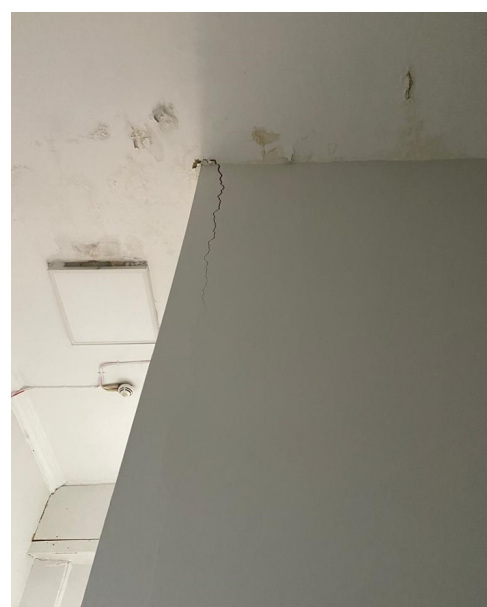
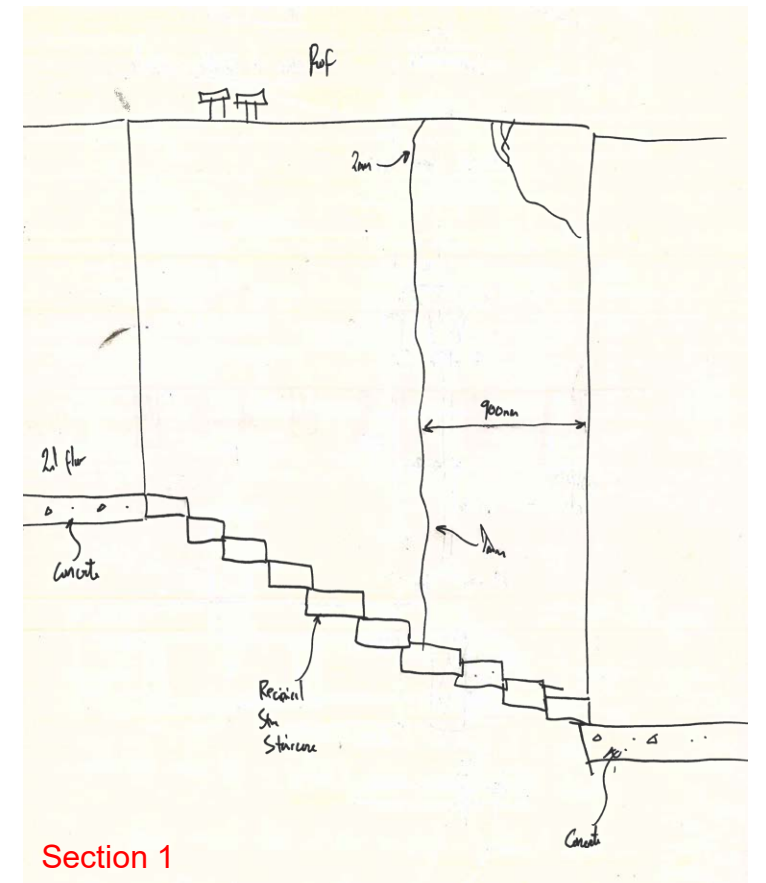
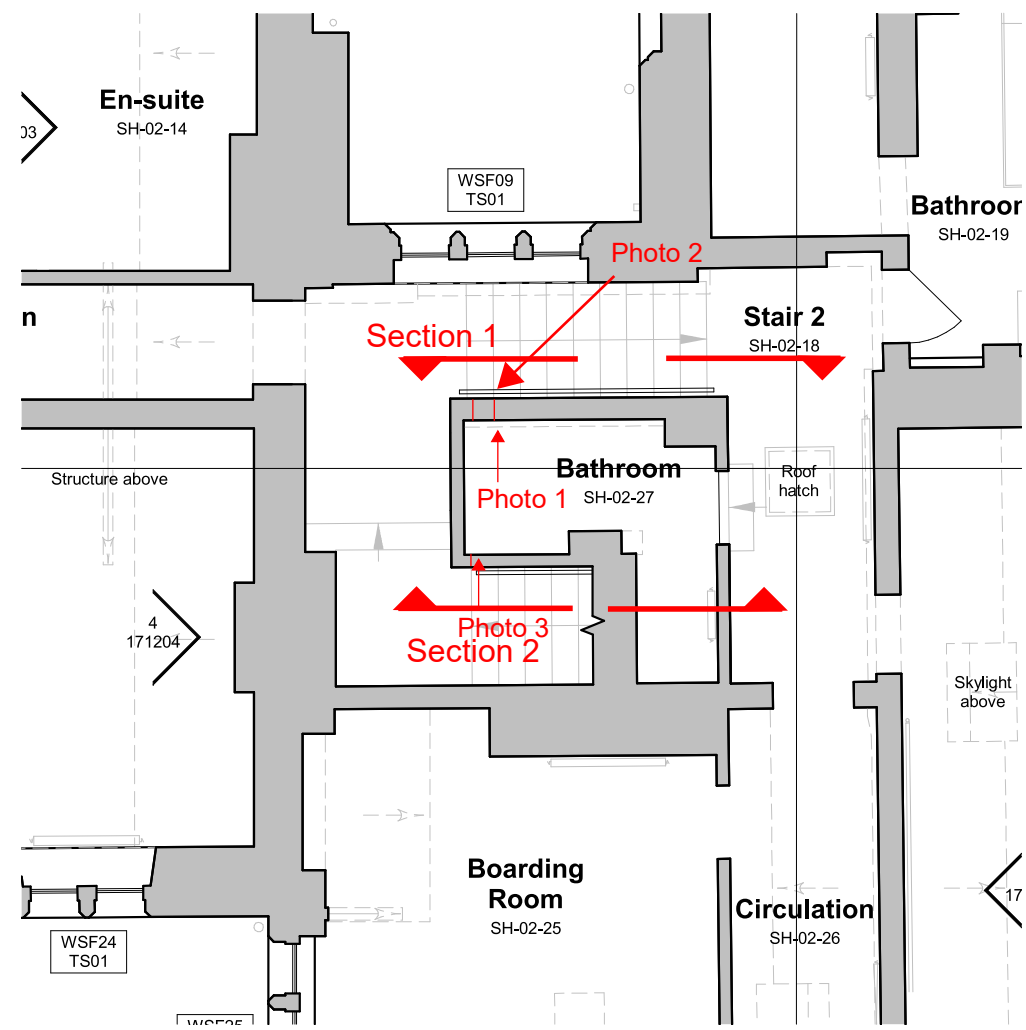
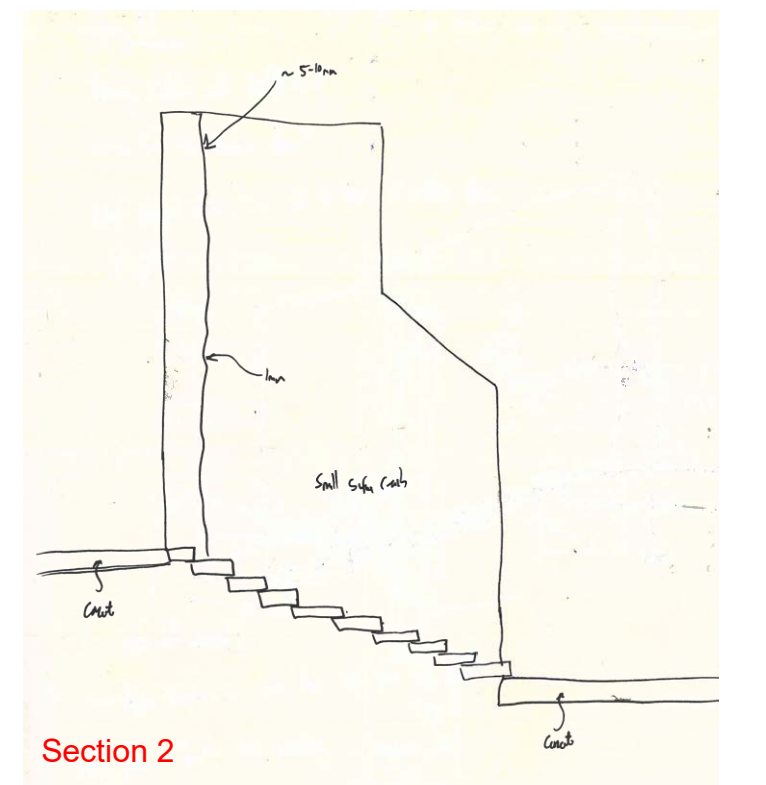


Photo 3

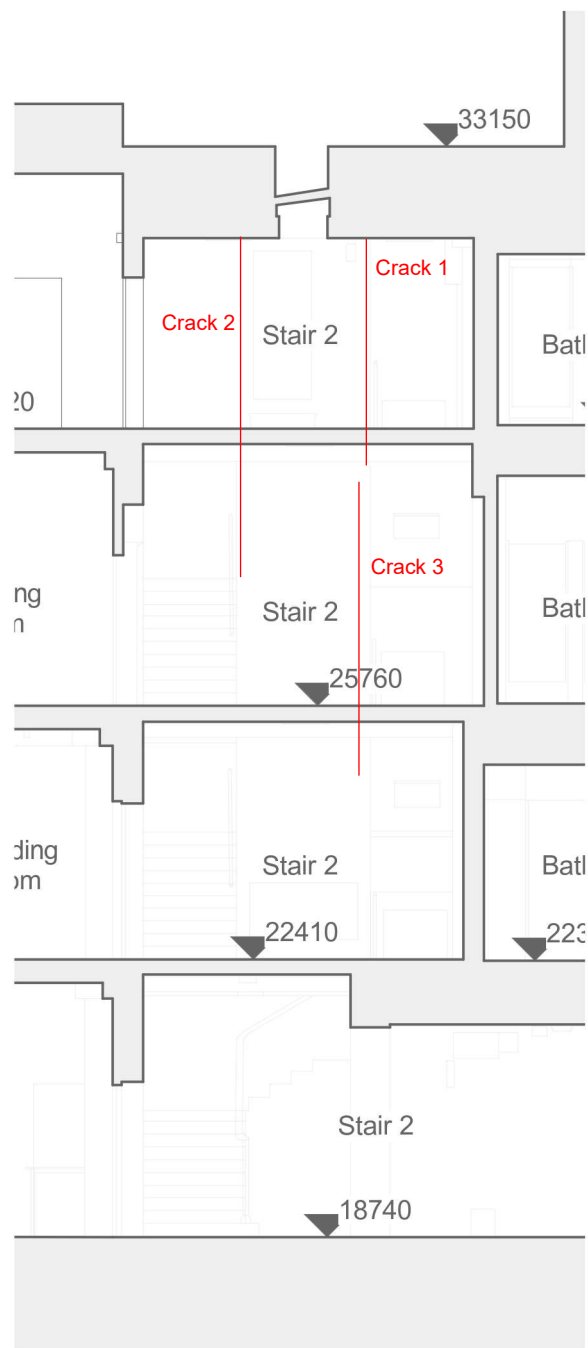


Section 1

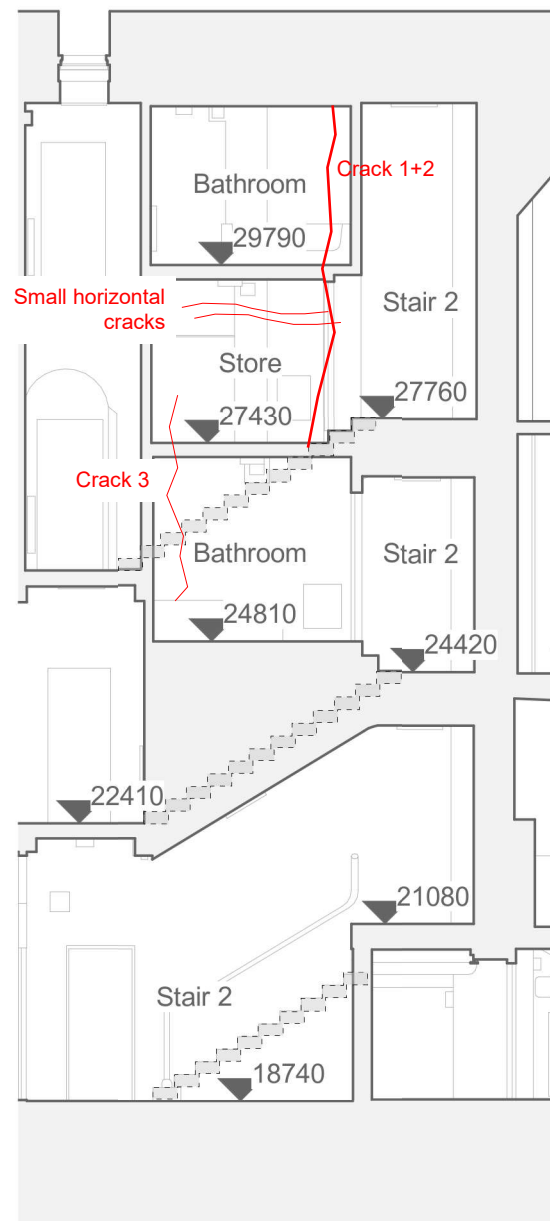


Section 2

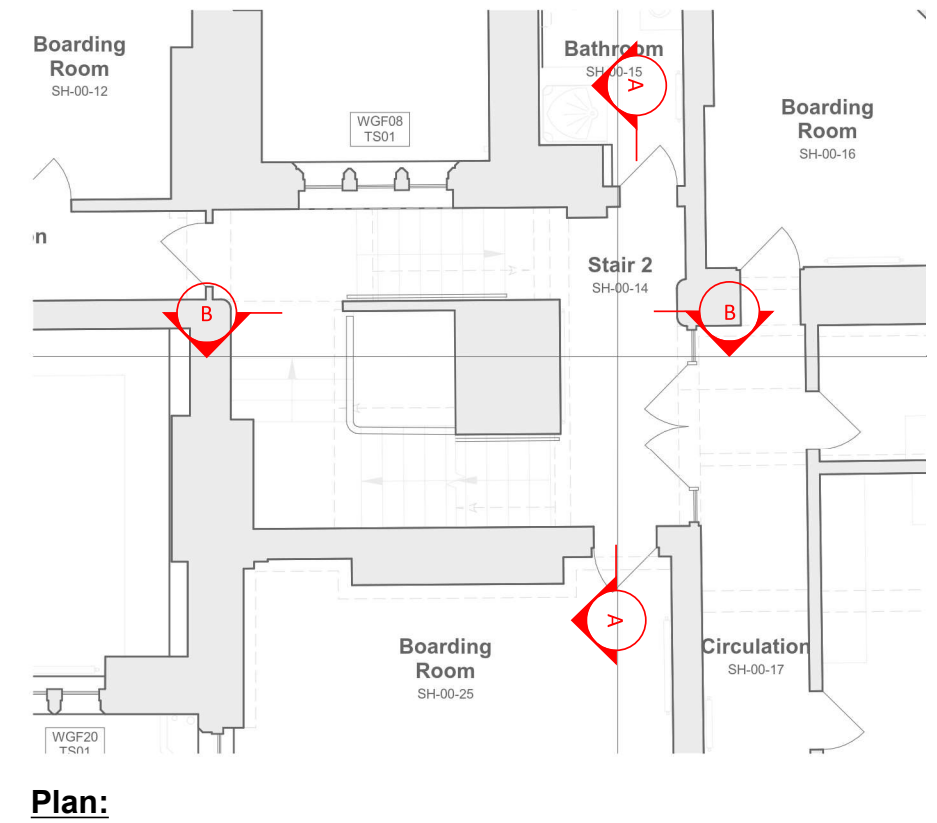
Crack Mapping



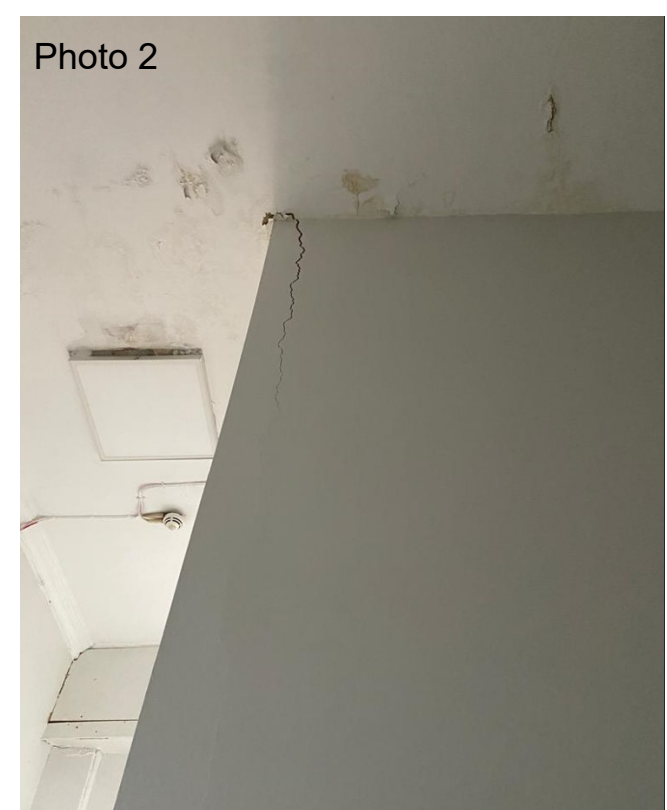
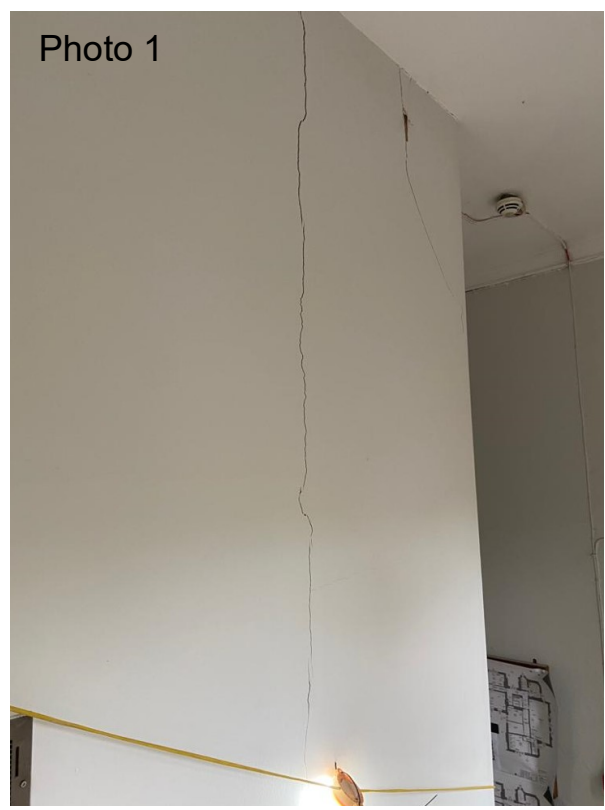
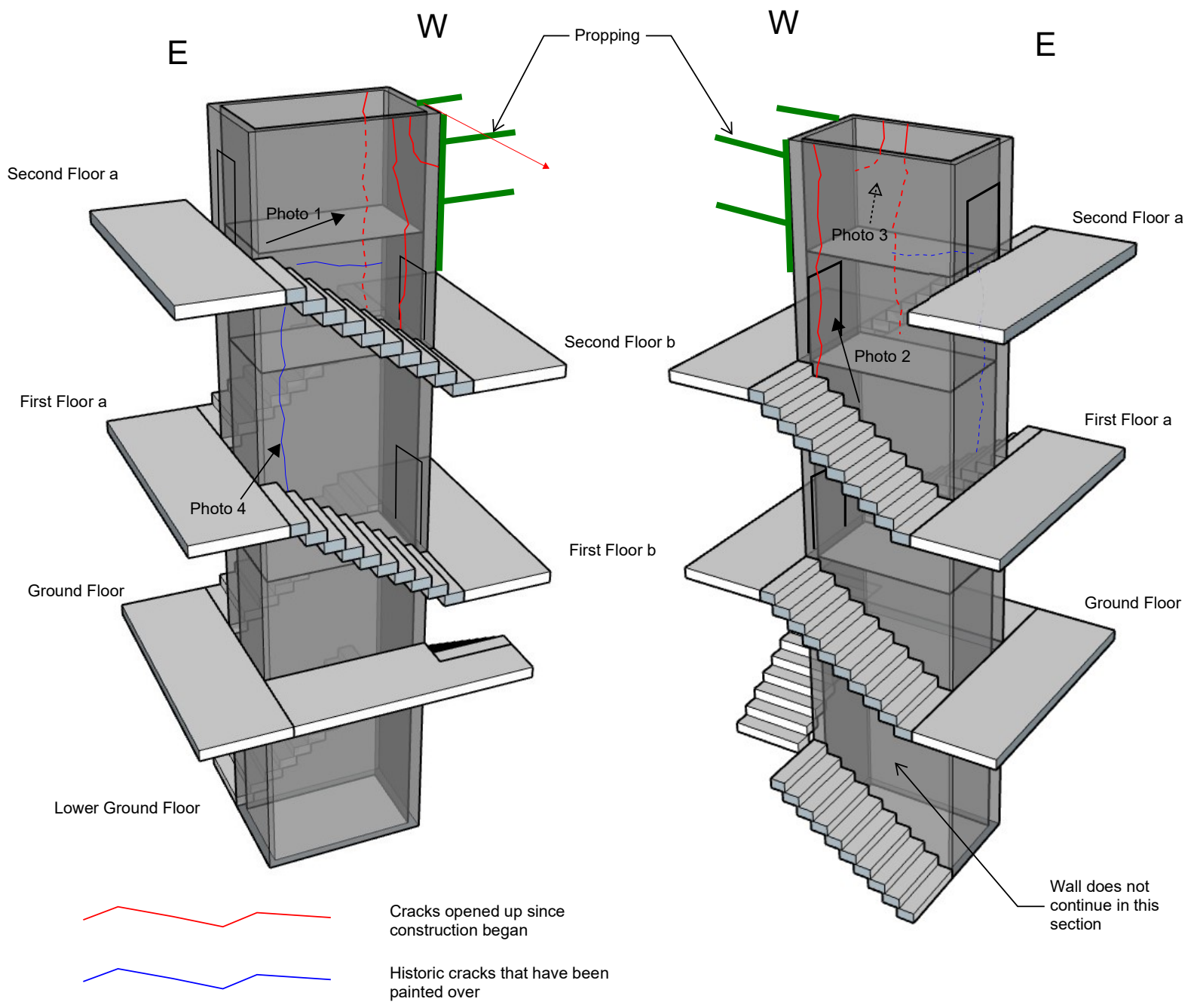
Section A-A:



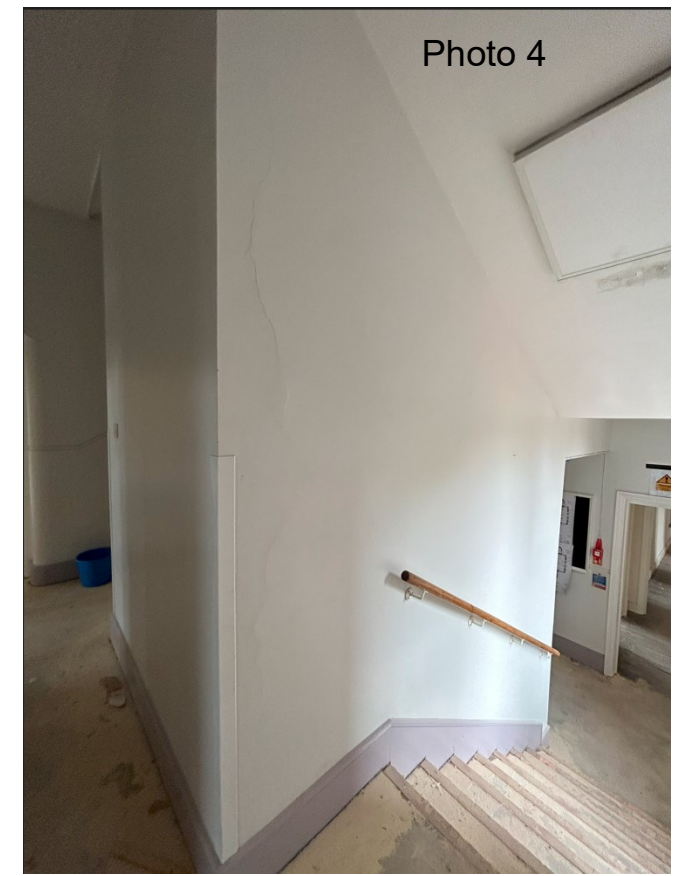
Section B-B:



Plan:



Photos taken prior to propping



levittbernstein.co.uk

London

Thane Studios
2-4 Thane Villas
London N7 7PA

+44 (0)20 7275 7676

Manchester

Eastgate
2 Castle Street
Manchester M3 4LZ

+44 (0)161 669 8740