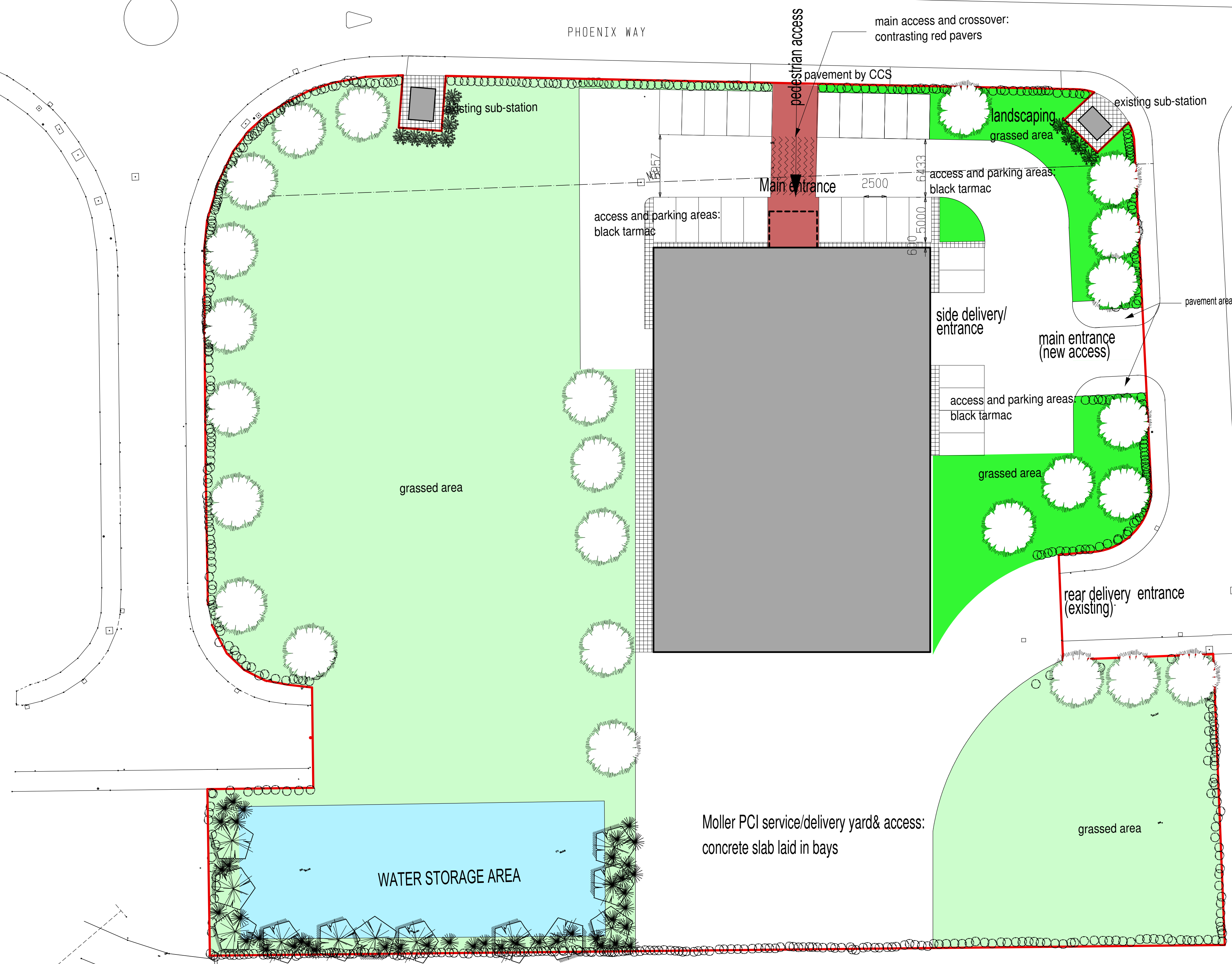


JOHN GLENN
GARAGE DOORS

UNIT 8

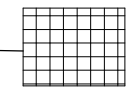




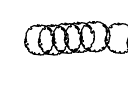


PHOENIX WAY


INSPIRATION



KEY

Detailed planting schedules, soil additives, muges and spacings to be determined on site by specialist landscaping contractors

-  concrete paving slabs
-  grass seeding planting: species-poor mix e.g Emmergate EM4 Meadow Mixture for clay soils: two fescue and one rye-grass cultivar
-  grass turf: 'Medallion' supplied by Rowlawn, or equal
-  water storage tank with raked sides
-  proposed buildings
-  boundaries to be mixed hedging to provide cover and berries for birds: hawthorn, blackthorn, prunus spinosa and holly
-  boundary trees : rowan (sorbus aucuparia), oak (Quercus Robur), Aspen (Populus Tremula), Silver Birch (Betula Pendula), Wild Cherry (Prunus Avium), Field Maple (Acer Campestre)
-  water-storage area to have gentle sloping banks <1.5 angle; maximise shallow areas; only native non-invasive shrubs provided: Cotoneaster (various), Euphorbia Amygdaloides, Ruscus Aculeatus, Salix Herbacea, Sorbus Anglica ; north side left unshaded and open:

rev	description	author	date
 Stephen Waldron Architects Ltd <small>07584 056 714; 01685 647 618; enquiries@stephenwaldronarchitects.com; www.stephenwaldronarchitects.com</small>			
client	Moller PCI		
project	New HQ site, Garngoch Business Village, Swansea, SA4 9WF		
drawing title	Proposed site landscaping plan		
drawing no.	scale	date	signed
1622.PL07	1:250 @ A1	09.01.18	SNBW