

Black Mountains Central South Upland Survey

Produced for

RCAHMW

23/11/07

**NAR Vaughan
ACK Roseveare
MJ Roseveare**



ArchaeoPhysica Ltd

Kitchener's, Home Farm, Harewood End, Hereford HR2 8JS UK

Tel. +44 (0) 1989 730 564 Fax. +44 (0) 7050 369 790

Web site: www.archaeophysica.co.uk

Mapping Our Heritage



Crynodeb Annhechnegol

Gwnaed yr arolwg o'r Mynydd Du dan nawdd Menter yr Uwchdiroedd, a noddir gan Gomisiwn Brenhinol Henebion Cymru, rhwng Ebrill a Hydref 2007. Oherwydd dwysedd annisgwyl y darganfyddion a oedd yn gysylltiedig â'r byd milwrol modern yn ystod y sesiwn cyntaf, gwnaed y gwaith maes mewn dau sesiwn.

Rhyw 38 o gilometrau sgwâr o dir a arolygwyd, ac fe gynhwysai hynny'r ddwy gefnen i'r gogledd o Grucywel a ymunai â'i gilydd yn Waun Fach i ffurfio siâp tebyg i bedol. Pennau deheuol y cefnennau oedd Table Mountain a Partrishow Hill.

Cafwyd bod dwysedd uwch o safleoedd ar y gefnen orllewinol nag ar yr un ddwyreiniol, a hynny am fod mwy o graig yn brigo yno a bod modd ei defnyddio i godi adeiladweithiau arni. Ychwanegwyd ymhellach at y nifer o amgylch Pen Cerrig-calch gan amllder y pantiau o wneuthuriad dyn ar y llethrau sgri. Nodweddion ôl-ganoloesol neu fodern oedd y rheiny a chawsant eu creu drwy dynnu cerrig rhydd a'u pentyrru o amgylch y pant. Fel rheol, yr oeddent yn rhyw 1.5 metr ar draws ac yn fetr o ddyfnder, ond fe amrywai eu siâp a'u dimensiynau lawer iawn. Yn aml, ceid grwpiau, ac weithiau barau, ohonynt, ond yn weddol fynych ceid cynifer â deg neu bymtheg. Gan i'r gwaith o ddod o hyd i ordnans byw ar y llethrau i'r gorllewin o Ben Allt-mawr, a'i bod hi'n hysbys i ymarferion milwrol gael eu cynnal yno, mae'n debyg mai cysgodfannau bach neu dyllau ymochel a oedd yn gysylltiedig â hyfforddiant milwrol yw'r pantiau hynny.

Gan mwyaf, brigai'r graig ar y llethrau uchaf ac yr oedd y ffaith fod meini adeiladu ar gael yno'n gwrthbwyso anghyfleustra'r lleoliad mor uchel â hynny. O ganlyniad, gwelwyd y gostyngiad cyffredinol a disgwyliedig yn amllder y safleoedd wrth i'r tir godi, a hynny oherwydd y ffaith amlwg bod llai o arwynebedd wrth i'r mynydd gulhau, ond ni chafwyd unrhyw anghysondeb penodol nad oedd modd ei esbonio.

Sylwyd bod llai o safleoedd ar y llethrau a wynebai'r dwyrain ar y gefnen orllewinol, a hynny am fod yr ochr orllewinol yn cael mwy o oriau o heulwen. Nid oedd y rhan fwyaf o ochr ddwyreiniol y gefnen ddwyreiniol yn rhan o'r tir a arolygwyd. Gwelwyd tueddiadau o ran y math o safle wrth i'r cwarrau fod ar dir is gan mwyaf, er y cafwyd digon o eithriadau. Yr oedd bron pob un o'r cerrig terfyn a gofnodwyd yn ymyl copaon y mynyddoedd.

Yn ystod yr arolwg, nid oedd modd dod o hyd i rai o'r safleoedd sydd wedi'u codi yn y Cofnod Lleol o'r Amgylchedd Hanesyddol (cofnod Ymddiriedolaeth Archaeolegol Clwyd-Powys). Ar dro, gallai hynny ddigwydd am fod y cyfesurynnau'n anghywir. Er enghraifft, cawsai capel ei gofnodi ar y llethr serth i'r gogledd-ddwyrain o Ben Cerrig-calch ond ni ellid dod o hyd iddo. Yr un oedd y sefyllfa o ran tŷ ar lethr gorllewinol Tal Trwynau. Mae'n debyg bod modd priodoli methu â dod o hyd i safleoedd eraill i'r llystyfiant trwchus ar y llethrau isaf – er enghraifft, safle damwain B17 gilometr i'r de o Ben Twyn Mawr a'r llwyfannau ar lethr ddwyreiniol Crug Mawr, er y cafwyd hyd i lu o safleoedd newydd.

Ar y cyfan, mae'r prosiect wedi llwyddo i wneud cofnod cyflawn o'r adeiladweithiau artiffisial ar y tir a arolygwyd ac i gynhyrchu set o ddata a fydd yn cynorthwyo ymchwil yn y dyfodol. Mae defnydd helaeth wedi'i wneud o GIS a'r trawsgrifiadau o awyrluniau gan CBHC, a bydd y data'n cyfrannu at brosiect sydd ar y gweill gan ArchaeoPhysica i ddatblygu ymagweddau dadansodol ar sail GIS at archwilio Uwchdiroedd Cymru.

Tachwedd 2007



Non-Technical Summary

Survey of the Black Mountains area proceeded on the auspices of the Royal Commission on the Ancient and Historical Monuments of Wales (RCAHMW) grant aided Uplands Initiative between April and October 2007. The fieldwork took place in two sessions, due to the unexpected density of modern military-associated finds in the first session.

The survey area was roughly 38 square kilometres and covered two ridges north of Crickhowell, joining at Waun Fach to form a rough horseshoe shape. The southern extremities of the ridges were Table Mountain and Partrishow Hill.

The western ridge bore a higher density of sites than the eastern one. This was because there was far more outcropping rock which could be utilised to build structures. The tally was further bolstered around Pen Cerrig-calch by the very frequent occurrence of man-made hollows in the scree slopes. These were post medieval or modern features created by removing loose stones and piling around the depression. They were usually about 1.5 metres across and 1 metre deep, though their shape and dimensions varied markedly. They were often found in groups, sometimes in pairs, but not infrequently numbering as many as ten or fifteen. As live ordnance was discovered on the slopes to the west of Pen Allt-mawr, and the area is known to have been the scene of military exercises, it seems likely that these hollows are small shelters or foxholes associated with military training.

The rock outcropping was generally on the higher slopes and the availability of building stone counter balanced the inconvenience of the location at these heights. As a result, there was the expected general decrease in the frequency of sites with altitude, due to the obvious fact that there is less surface area as the mountain tapers, but there was no explicit, unexplainable discrepancy.

It was noticeable that on the western ridge there were fewer sites located on the east facing slopes, which can be explained by the west side enjoying longer hours of sunlight. Most of the east side of the eastern ridge was not in the survey area. There were trends within site type, with quarries generally being located lower down, although there were plenty of exceptions. Almost all the boundary stones recorded were located near the tops of the mountains.

Some sites recorded in the local HER (the Clwyd-Powys Archaeological Trust) could not be found during survey. On occasions this could be because the co-ordinates were incorrect, for instance there is a chapel recorded on the steep slope to the northeast of Pen Cerrig-calch which could not be located, and likewise a house on the west slope of Tal Trwynau. Other failures to locate sites are probably attributable to the dense vegetation cover on the lower slopes, for instance the B17 crash site a kilometre south of Pen Twyn Mawr and the platforms on the east slope of Crug Mawr, although many new sites were discovered.

Overall the project has been successful in making a total record of the artificial structures within the survey area and producing a data set that will support future research. Extensive use has been made of GIS and the air photo transcriptions from the RCAHMW and the data will contribute to a developing project at ArchaeoPhysica to develop GIS-based analytical approaches to examining Welsh Uplands.

November 2007



Table of Contents

1	Introduction	1
	Location	1
	Parties involved	1
	Basic methodology & rationale	1
	Constraints & variations	1
2	Methodology	2
	Desktop assessment	2
	Cartographic and documentary resource	2
	Assessment and compilation	2
	Field survey	3
	Dates & personnel	3
	Equipment	3
	Technique	3
	Recording	4
	Archive considerations	4
	Data collation & analysis	4
	GIS formation	4
	Limiting factors	5
3	Context	6
	Physical landscape	6
	Landscape form	6
	Soils and vegetation	6
	Hydrology	6
4	Field Survey	7
	Introduction	7
	Use of GIS	7
	Archaeology	8
	Known monuments	8
	Geographical summary	8
	Monuments by altitude	8
	Archaeological character	9
	Breakdown by NMR Broad Class	9
	Breakdown by most numerous types	9
	Breakdown by Period	9
5	Discussion	11
	Survey	11
	Coverage	11
	Significant discoveries	12
	Land usage	12
	Settlements	12
	Quarrying	14
	Tracks	15
	Sheepfolds	15
	Recreational and clearance cairns	15
	Shooting butts	16
	The correlation of air photo transcriptions to sites	16
	Response to uplands research themes	16
	Upland prehistoric settlement from the Mesolithic period onwards, only visible through artefact scatters around upland lakes	16
	The structure, components and phasing of field systems in upland areas with an eye to possible early dating of some enclosures, and the presence of encroachment	16



The identification of upland settlement remains from periods where they are poorly represented, particularly the Bronze Age and Early Medieval periods	16
Prehistoric ritual landscapes and their relationships with contemporary settlement.....	17
Upland deserted settlements, particularly those of potential medieval date with cognisance of surrounding agricultural or storage features associated with the domestic buildings.....	17
The presence and extent of remains of rural industries in the uplands, particularly peat cutting, quarrying, rabbit farming and mining	17
Transport networks of all periods in relation to the upland areas and the inter-regional implications of these, in particular extensive remains of upland trackways and early systems of roads and tramways with their associated infrastructure.....	17
Agri-Industrial settlement patterns in contexts where farming and industrial activity coalesce.....	18
The form and distribution of extraction landscapes and the association of defined mining areas and their mining features	18
The relationship of sites to woodland, where it exists and to identified deposits of peat and areas of peat extraction or drainage.....	19
Classification, criteria & queries.....	19
Environmental potential.....	19
Recommendations.....	20
Documentary resource & NMRW	20
Further study.....	20
6 Catalogue	21



1 Introduction

Location

Country	Wales
County	Powys
Nearest Town	Abergavenny
Landholding	Various
Central Co-ordinates	324 324

1.1 The survey area lies within the Black Mountains in Powys, and covers roughly 36 square kilometres over two ridges north of Crickhowell which join at Waun Fach to form a rough horseshoe shape. The southern extremities of the ridges were Table Mountain and Partrishow Hill. Abergavenny is located a few miles to southeast.

Parties involved

1.2 The survey was commissioned by the Royal Commission on the Ancient and Historical Monuments of Wales (RCAHMW) on receipt of grant aid funding from the Welsh Assembly.

1.3 Fieldwork used a team of up to five people drawn from Anne & Martin Roseveare, Benj Britton, Thomas Desalle and Nico Vaughan. Database design and GIS support was by Martin Roseveare and data entry was by Nico Vaughan. GIS-based analysis was by Nico Vaughan.

1.4 Acknowledgements are due to the RCAHMW for support during the project, CPAT for supply of information from the HER, the Forestry Commission for allowing access to their tracks in Mynydd Du Forest and the Bomb Disposal Unit from Gloucester for dealing with live ordnance found during the survey. Rob Evans from Oswestry, Shropshire, provided information about the location of the B17 crash site.

Basic methodology & rationale

1.5 The Uplands Initiative projects are field reconnaissance exercises contributing to an increased understanding of the archaeological content of the Welsh upland regions.

1.6 A GIS system was prepared in advance, incorporating current mapping (OS Landline), a digital elevation model (OS Landline Profile), desktop assessment results and known sites from the NMR, HER and the RCAHMW air photo mapping project.

1.7 Transects were walked at between 30m and 50m intervals depending upon local visibility and accessibility. Sites are recorded using a standard written format and hand-held GPS units. Checks are made in the field against those sites already known, including RCAHMW air photo mapping.

Constraints & variations

1.8 The start of the fieldwork was in April 2007. The discovery of live ordnance halted the survey in one part of the area until it had been made safe by the Bomb Disposal Unit. The unexpected discovery of a very high density of hollows in the rock outcrops, attributed to the military as shelters or foxholes, caused the survey to be conducted in two sessions, the second beginning in August, in order to catch up on entering the escalating amount of data on to the database. The summer of 2007 also saw particularly high rainfall and flooding across the country.

1.9 With one or two exceptions the entire area was walked with a mean line separation of between 30m and 50m as required by the specification. The exceptions to this were for reasons of safety on extremely steep slopes. Where this was the case, a visual assessment from the top and bottom of the slope and from adjacent accessible slopes was made. In most, if not all cases, the very steepness of these slopes would preclude significant past human activity.

2 Methodology

Desktop assessment

Cartographic and documentary resource

2.1 The map resources used for this project are tabulated below:

	Epoch 1	Epoch 2	Epoch 3
42SO12se	1891	1905	1952-53
42SO12ne	1890-1	1905	1952-53
42SO22se	1891	1905	1938-53
42SO22sw	1891	1905	1938-53
42SO22ne	1891	1905	1953
42SO22nw	1891	1905	1952-53

2.2 From experience of working in the higher mountains of Wales historic mapping has not been consulted due to difficulties in determining the location of depicted features on the ground. This is because the precision of the original mapping is obviously unknown but also the lack of landmarks makes attempts to georeference the material to modern mapping at best inaccurate. This in turn leads to uncertainty in the field, avoided by simply mapping all artificial structures during fieldwork.

2.3 Other sources were examined and the principal ones are listed below:

Clwyd-Powys Archaeological Trust HER extract

Clwyd-Powys Archaeological Trust website (HLC studies, previous work, etc)

Countryside Council for Wales website (background information)

Megalithic Portal website (background information)

National Soil Resources Institute <http://www3.landis.org.uk/soilscapes/>

National Monuments Record of Wales (NMRW) extract

RCAHMW Uplands Project air photo transcriptions

Rob Evans' compilation of aircraft crash sites

Assessment and compilation

2.4 The NMR data contained fifteen records, three of which are Scheduled Ancient Monuments.

2.5 The description field in the HER was truncated for some entries due to the export format used by CPAT.

2.6 It was sometimes not possible to locate sites on the HER record. This could be because, as has been found previously, some pairs of sites in the HER are in fact the same monument – transcribed from two epochs of early OS mapping with slightly different positions. From discussion at the Uplands Forum February 2007 it was apparent this is a known occurrence (Bob Sylvester, *pers. comm.*). Some failures to locate sites could be explained by changes in conditions such as vegetation cover.

2.7 Two HER sites certainly had incorrect co-ordinates. The first has the PRN 72430 and is called Pen Cerig Calch (sic) chapel site. The co-ordinates are on a steep, unenclosed slope with no sign of a structure. Is it possible that the reference to Pen Cerrig-calch in the name is based on



incorrect co-ordinates, rather than being the actual location of the site? The second site has the PRN 9460 and is called Daren Fach House Site. There was no trace of a ruin on the mountainside, but there was one located roughly 100 metres to the west in a field. It seems that the HER entry actually refers to this site and the co-ordinates require adjustment. On another occasion, on the southeast facing slope above Cwm Banw, the HER records there being a kidney shaped enclosure at 321635 223955 (PRN 43228) and a damaged cairn (PRN 43239) at 321595 223805. An enclosure and a damaged cairn were found, but positioned as though the co-ordinates of the two sites had been swapped. However, the sites differed enough in form to the HER records for it to be possible that they were genuinely previously unrecorded and that the sites on the HER were obscured during the survey.

2.8 The 1st – 3rd Epoch OS maps were assimilated into the project GIS as georeferenced images, then all monuments, sites and former tracks & boundaries transferred to the initial sites record ahead of fieldwork. Where features existed on more than one epoch of mapping, the latest-mapped position of the feature was taken.

2.9 Some correlations were observed between the air photo transcriptions and details on the earlier OS mapping, particularly where tracks were known to exist.

Field survey

Dates & personnel

2.10 Fieldwork ran from the 18.04.2007 through to the beginning of October 2007. A number of days were partly or completely lost due to adverse weather conditions.

2.11 The entire personnel were drawn from ArchaeoPhysica Ltd. Within each team there was a nominated First Aider and a mixture of people with varying experience. Nico Vaughan oversaw health and safety and was responsible for data collection and collation procedures.

Equipment

2.12 Each field team carried cameras and GPS units and each walker had a waterproof notebook and a laminated booklet of templates to guide recording. Detailed maps depicting known sites and all landscape details were carried.

2.13 Individuals provided their own appropriate clothing. High visibility vests/jackets were worn and mountain safety gear and first aid kit were spread amongst the team members.

Technique

2.14 The vast majority of the survey area was unenclosed heath and subsequently the open mountainside was surveyed according to the topography, e.g., a side of a valley at a time. Coverage was monitored daily and no significant omissions were found. In areas of open grassland, traverses were up to 50m apart if there was sufficiently clear visibility.

2.15 Through previous experience it was known to be necessary to work with the landscape at all times to avoid undue exertion. For this reason fieldwork usually worked along the contours wherever possible, starting at the base of slopes and working uphill until about midday and then returning downhill in the next swathe of country. Where there were crags the landscape was divided above and below the crag, it proving more efficient to work towards these from above or below in separate campaigns.

2.16 For safety reasons the fording of streams was avoided wherever possible, these being used to bound survey areas instead.

2.17 There were no reportable or non-reportable injuries or near miss incidents.



Recording

2.18 The overall rationale behind the formation of the record was to ensure the basic information was captured efficiently in the field, whilst allowing checking of previously known sites.

2.19 Record sheets carry the identity of the author and the date of survey to enable auditing, along with GPS unit ID and waymark number as well as the recorded co-ordinates.

2.20 Record fields such as 'Broad Class', 'Form', 'Condition' and 'Land Use' were completed from lists of permitted field contents to minimise the chance of ambiguous records, using a template. A sketch of the monument on the record sheet was required where complex or unusual shapes or layouts existed. This was usually the case within quarry sites and composite sheepfolds.

2.21 In general one photograph was taken of each site, the exceptions being where more than one view of a site was felt necessary or where multiple sites appear on photographs. Occasionally poor light and other conditions prevented a photograph from being taken. Photographs were not always included in the case of the modern hollows dug into the scree slopes as these features were incredibly numerous and similar in form.

2.22 Monuments within complexes were allocated *ad hoc* between team members with internal specialisms brought to bear. Larger complexes were recorded within specific field campaigns to avoid accidental omissions.

2.23 Find spot locations were checked for possible further remains although the precision of these meant that any further finds were likely to be accidental.

Archive considerations

2.24 The result of the field campaign is a set of waterproof notebooks. These are the original records, each record in which carries a unique 'EN' number.

2.25 These records contain occasional sketches of sites, and therefore include more information in some cases than can be conveyed in the written record. However, they also represent the original primary record whereas the digital record contains corrected, augmented and updated data and therefore has precedence.

2.26 In addition, there is a large photographic archive in digital form and the NMR-compatible flat database required by the RCAHMW specification. Additional photographs showing general landscape views are contained in our archive.

Data collation & analysis

2.27 The basic digital record was built in stages as survey proceeded, permitting errors and queries to be caught in good time and reviews or repeat visits made where required.

2.28 In each batch of data entry all records were given a unique 'EN' number as a temporary analogy to the NPRN to enable auditing. Each record was checked for omissions and obvious errors before being passed for initial data entry into the database.

GIS formation

2.29 To aid fieldwork planning and logistics in detail the database content was available as a live layer in the project GIS throughout survey. All monuments already recorded within the NMR, the local HER, the AP mapping and those available from the desktop study were also available as GIS layers and the whole superimposed upon topographic mapping (OS Landline) and an elevation model (OS Landform Profile). To this was added access information, e.g., CRoW access/non-access land, negotiated access and shooting restrictions.

2.30 In addition, a full virtual landscape was formed by draping detailed colour aerial photography onto the digital topographic model and overlaying this with streams, monument

locations etc. The GIS then permitted 'fly-throughs' to be performed with considerable logistical and practical benefit.

2.31 The area covered was recorded each day within another layer. With this it was possible to correlate the rate of coverage with the density of monuments and the type of terrain and hence predict fairly accurately how much ground could be surveyed from one day to the next. It also allowed for the planning of escape routes and identification of hazardous areas during the allocation of survey blocks.

2.32 For all records altitude data was transferred automatically into the record from a surface generated from OS Landform Profile data.

2.33 Where NMR or HER sites were records of multiple related monuments, the relevant parts of the information were combined with individual site records. The NMR record was often used as the "parent" record for a complex, with "child" records being formed from information from field survey and the other sources.

Limiting factors

2.34 The visibility of low-lying monuments in peat country is severely limited by the presence of the peat itself and by the dense heather growth topping it in most places. The lower slopes of the survey area suffered thick bracken growth.

2.35 The improved fields within the survey area have associated clearance cairns and piles of dumped stone. However, some of these may conceal earlier sites, such as prehistoric funerary monuments.

2.36 Some of the hilltop cairns have had shelters built on them, masking the form of the earlier monument.

2.37 The Brecon Beacons are the scene of current military training. Evidence of this (in the form of shelters, hollows and ordnance) was found during the survey. Personnel and ammunition may therefore have damaged and obscured earlier monuments.



Figure 1 *Live ordnance discovered during the survey*



3 Context

Physical landscape

Landscape form

2.38 The two ridges of the survey area are aligned roughly north-south and join at the north end at Waun Fach (810m). The ridges are about 10 km in length, with the western one including Table Mountain (450m), Pen Cerrig-calch (701m), Pen Allt-mawr (719m), Pen Twyn Glas (646m) and Mynydd Llysiau (663m). The eastern ridge includes the peaks of Pen y Gadair Fawr (800m), Pen Twyn Mawr (658m), Pen Gwyllt Meirch (580m), Disgwylfa (540m) and Crug Mawr (550m). Roughly 6km of the eastern side of the latter ridge is covered by Mynydd Du Forest, although this was outside the survey area. The steepest slopes are located on the east side of the west ridge, beneath Pen Twyn Glas and Mynydd Llysiau. There is a lot of outcropping rock on this slope and upon the southern half of the west ridge in general, culminating in the moonscape summit of Pen Cerrig-calch and the craggy darren 1km to the southwest of it.

Soils and vegetation

2.39 The lower slopes of the survey area are freely draining lime rich, loamy soils. Higher up and upon the ridges the soils are more acidic and around Pen Cerrig-calch and Pen y Gadair Fawr there is peat and blanket bog.

2.40 The lower slopes of the survey area have thick bracken cover which gives way to heather and then short, unimproved grassland on the tops. Around Partishow Hill there is thick gorse cover. There were rocky outcrops around Pen Cerrig-calch, Pen Gloch-y-pibwr and Bryniog. There were some improved fields in the survey area which were pasture. There was also some woodland.

Hydrology

2.41 The streams that flow down the inside of the horseshoe of the survey area feed into the Grwyne Fechan in the valley bottom. The slopes towards the north of the area, below Waun Fach and Pen y Gadair Fawr, are particularly wet. Upon the plateaux there were areas of peat and standing water, but at the time of survey they were not impassable. The Grwyne Fawr Reservoir is located 1km northwest of Waun Fach, although it is within a separate drainage area.



4 Field Survey

Introduction

Use of GIS

2.42 At the analysis stage of the project GIS has been used to automate several labour-intensive tasks and to provide a powerful platform for spatial analysis. The data preparation tasks for which GIS was used include:

- Matching of surveyed monuments with existing NMR & HER records by location, including morphing of HER tables into NMR format
- Identification of monuments not found during survey by location
- Automated insertion of community and other regional details into the record
- Capture of height data from the OS DEM
- Automated extraction of OS features and map generation
- Generation of an environmental model to assist with the provision of landscape context
- Fusion of NMR, HER, survey, aerial photographic and OS-derived data for analysis
- Database management, NPRN enumeration and table linking, etc.
- Exploration of thematic landscape encoding to facilitate mathematical analysis of site location, etc.

2.43 The thematic zoning is currently being developed and at the moment consists of the survey area divided into 100m x 100m cells, each with an average height, slope, aspect and distance from water. Vegetation cover is being added, based upon the fieldwork, as will be soil type. Between these, there should be sufficient information to examine what relationships exist between the presence or absence of monuments, their location and type and situation. Initial observations suggest strong correlations do exist but whether they can be generalised and turned into a reliable predictive model has not yet been examined.

2.44 In addition, all of the analyses described below were conducted within the GIS for simplicity and to use the implicit spatial structure of the data to best advantage.



Archaeology

Known monuments

2.45 A simple break down by content at the start of the project is tabulated below:

Broad Class	NMR	%	HER	%
Agriculture & Subsistence	0	0	46	19.8
Civil	0	0	3	1.3
Defence	1	6.67	3	1.3
Domestic	3	20	40	17.2
Industrial	0	0	1	0.4
Religious, Ritual and Funerary	10	66.67	26	11.2
Transport	0	0	1	0.4
Monument	0	0	69	29.7
Water Supply and Drainage	0	0	3	1.3
Unassigned	1	6.67	40	17.2

2.46 A large number of the HER recorded monuments are derived from cartographic study rather than fieldwork and some of the sites were found not to exist, perhaps by mis-identification by the OS surveyors. There were errors of position of some tens of metres in some cases where monuments did exist but a match could usually be obtained with the field record.

Geographical summary

Monuments by altitude

2.47 The table below shows the number of sites recorded at different altitudes within the survey area.

Altitude Band /m	Area / Ha	As % Area	Site Count	As % Total	Count per km ²
250 – 299	12	0.3	13	1.2	108
300 – 349	195	5.1	99	9.4	51
350 – 399	456	12	154	14.6	38
400 – 449	634	16.6	239	22.6	38
450 – 499	694	18.2	138	13	20
500 – 549	581	15.2	140	13.2	24
550 – 599	483	12.6	99	9.4	20
600 – 649	409	10.7	89	8.4	22
650 – 699	212	5.5	72	6.8	34
700 – 749	104	2.7	9	0.9	9
750 – 799	41	1.1	5	0.5	12
800 – 849	1	0.03	1	0.1	100
Total	3822		1058		

2.48 This result is generally what would be expected for an upland region, though there is a much smaller decrease in monument density with elevation than is evident in northwest Wales for example. The average 34 site counts per kilometre square for the 650 – 699 metre bracket breaks the trend a little, this being because the plateaux occur at this height, allowing huts to be built on level areas and ridge-top tracks to be created with their accompanying cairns. The very high average of 100 for the 800 – 849 metre bracket can be explained by the fact that 800 metres is only achieved once in the survey area and this summit, measuring 800 metres exactly, is marked with a cairn. The high average of sites in the 250 – 299 metre bracket is also likely to be a result of the area at that height being limited. Both of these can be disregarded.



Archaeological character

Breakdown by NMR Broad Class

Broad Class	Count	As % total
Agriculture & Subsistence	89	8.4
Civil	6	0.6
Defence	84	7.9
Domestic	173	16.4
Industrial	262	24.8
Monument (by form)	115	10.9
Recreational	79	7.5
Religious, Ritual and Funerary	62	5.9
Transport	103	9.7
Water Supply and Drainage	9	0.9
Unassigned	76	7.2
Total	1058	

2.49 There is little or no evidence for cultivation with associated settlement at high altitude. However, sheepfolds were regularly found, and occasional freestanding enclosures.

2.50 The 'Religious, Ritual and Funerary' classification is subject to the usual caveats surrounding the identification of what are mainly cairns as of ritual significance. In practice, this classification is perhaps somewhat inflated above the true figure.

Breakdown by most numerous types

NMR Type	Count	As % total
Bank (earthwork)	25	2.4
Trackway	101	9.5
Cairn	48	4.5
Clearance Cairn	26	2.5
Stone Pile	42	4
Marker Stone	15	1.4
Military Structure	41	3.9
Military Training Site	38	3.6
Quarry	237	22.4
Quarry Building	13	1.2
Hut	54	5.1
Hut Circle	18	1.7
House	12	1.1
House Platform	10	0.9
Shelter	61	5.8
Wall	20	1.9
Enclosure	10	0.9
Sheepfold	39	3.6
Shooting Stand	79	7.5
Findspot	22	2.1

Breakdown by Period

Period	Count	Grouped	As % total
Prehistoric	18	26	2.5
Prehistoric?	8		
Mesolithic	2	4	0.4
Mesolithic?	2		
Neolithic	6	8	0.8



Neolithic?	2		
Bronze Age	18	32	3.0
Bronze Age?	14		
Iron Age	8	10	0.9
Iron Age?	2		
Roman?	1	1	0.1
Medieval	5	21	2
Medieval?	13		
Medieval;Post Medieval	3		
Post Medieval	564	610	58
Post Medieval?	46		
Modern	15	116	11
Modern?	101		
Unknown	228	228	21.6

5 Discussion

Survey

Coverage

2.51 All the area originally allocated was covered. Coverage rates varied depending on terrain which varied from highly improved pasture to steep rocky slopes and heather-topped peat. Poor weather on some days also slowed progress as would be expected in this sort of environment.

2.52 The partly-eroded peat deposits and vegetation may have masked features. However, the peat was sufficiently deep to be ancient in its own right.

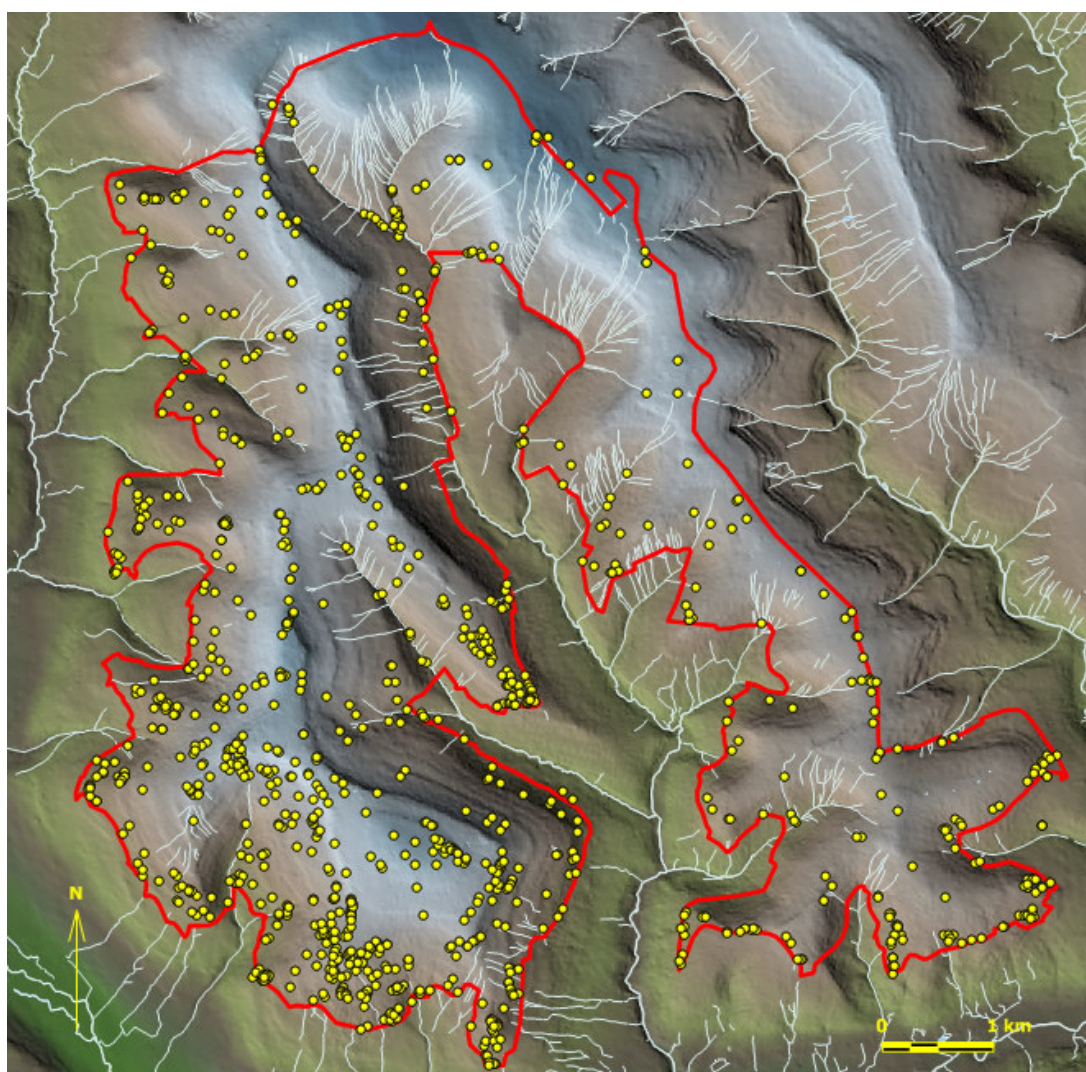


Figure 2 *The map above shows the distribution of sites recorded during the survey as yellow dots. The survey boundary is indicated by the red line, and the grey lines are streams. The topographic model is coloured dark green and dark brown for the lowest areas, through a paler green and a paler brown, into white and finally pale blue. The relief is also shaded according to a light source in the southwest. The higher proportion of sites on the western ridge can be seen, a result of the large amount of outcropping rock on that ridge.*

Significant discoveries

Land usage

2.53 The dominant current land use is sheep grazing and shooting. There are grouse on the mountain tops and shooting butts were frequently observed. Some of the lower slopes of the open mountain side, particularly west of Pen Twyn Glas, had clearance cairns indicating that the land was once improved and has since been abandoned. There were a handful of improved fields and a small amount of woodland in the survey area too.

Settlements

2.54 The most widespread settlement was recorded at the bottom of the slope to the south of Waun Fach at SO 21700 27850, where two streams meet. It comprised several long houses and huts. It probably represents several periods of occupation, the earliest perhaps being prehistoric.

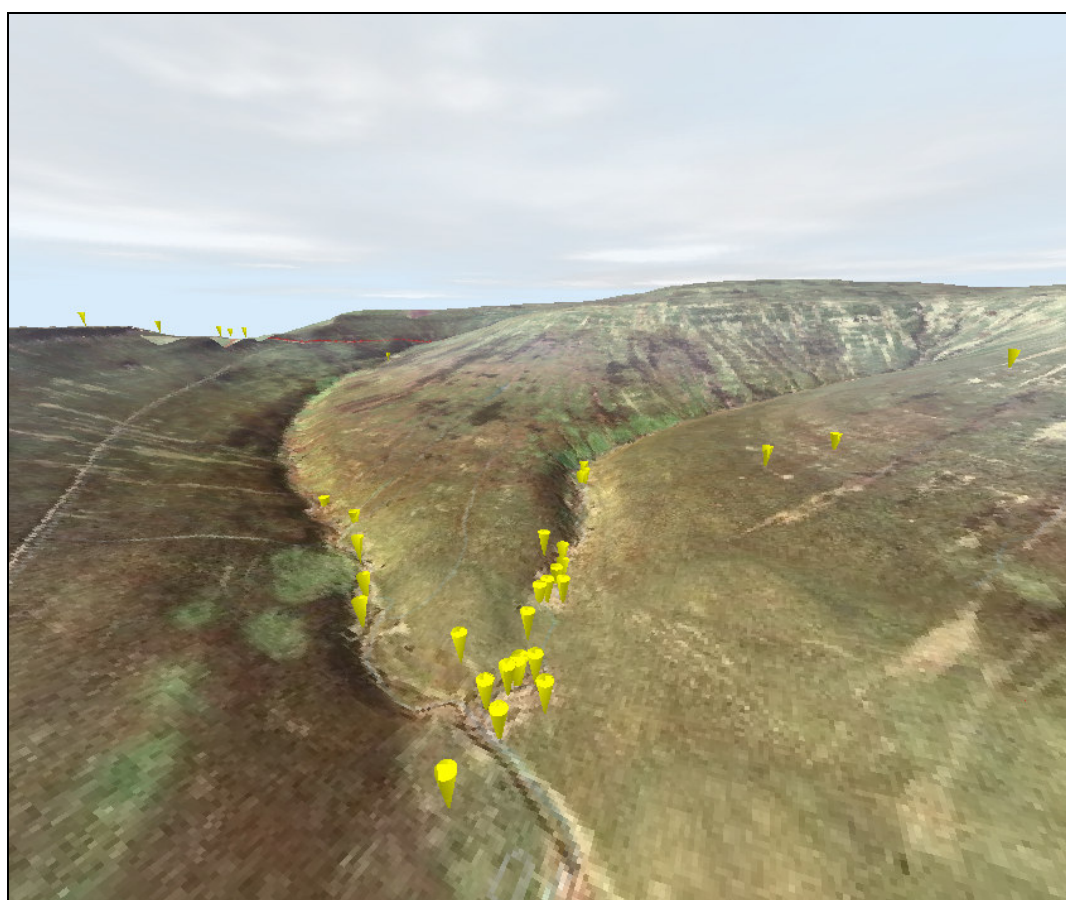


Figure 3 *The distribution of the settlement south of Waun Fach, with the sites indicated by yellow cones.*

2.55 A barn with a surviving A frame was located at SO 24285 21716, alongside the ruin of a house. The barn had slit windows and survived to full height, although the slab roof had collapsed.



Figure 4 *The ruined barn*

2.56 Shepherd's huts were usually found in isolation, although sometimes located not far from structures such as sheepfolds. Huts were occasionally found within or adjacent to quarries as well, particularly on the ridge of Tal Trwynau.



Figure 5 *A hut, with box shelf and bed recess at SO 25280 22538*

2.57 Prehistoric settlement included hut circles on the ridge northwest of Pen Cerrig-calch and on the southwest facing slope below it, though these were not the only examples. Prehistoric occupation of the area was also indicated by the presence of cairns. Two are located on the summit of Pen Cerrig-calch, and these are sufficiently large to have been exploited later on as shelters, with hollows being dug into the centre. A similar large and mutilated cairn was located on the ridge to the south of Cwm Nant-y-fedw at SO 20119 26071. A barrow was recorded on Pen y Gadair Fawr, and another possible turfed over barrow was recorded on Partrishow Hill.

Quarrying

2.58 Areas of quarrying were recorded throughout the survey area and at all heights, but more so towards the south where there is a greater proportion of natural rock outcropping. The form of quarrying varied markedly, although mining was absent in the survey area. Systematic pits with mounds revetted with stone walling were frequently found as at SO 20708 21765, although more common were smaller scale pits with waste material tipped more liberally. These pits were found clustered or in isolation, and their date was not always apparent, although it would be fair to assume that most were post medieval and were used for acquiring walling stone. Occasionally the quarry pits appeared to be scavenging loose, frost shattered rock rather than seeking solid bedrock. The larger complexes, sometimes a hundred metres across, were often located close together to exploit a particular seam of rock and were accompanied by trackways and buildings. A good example of this is on Tal Trwynau at SO 22696 23791, where several widespread areas of quarrying occupy the same ridge, forming prominent landscape features.

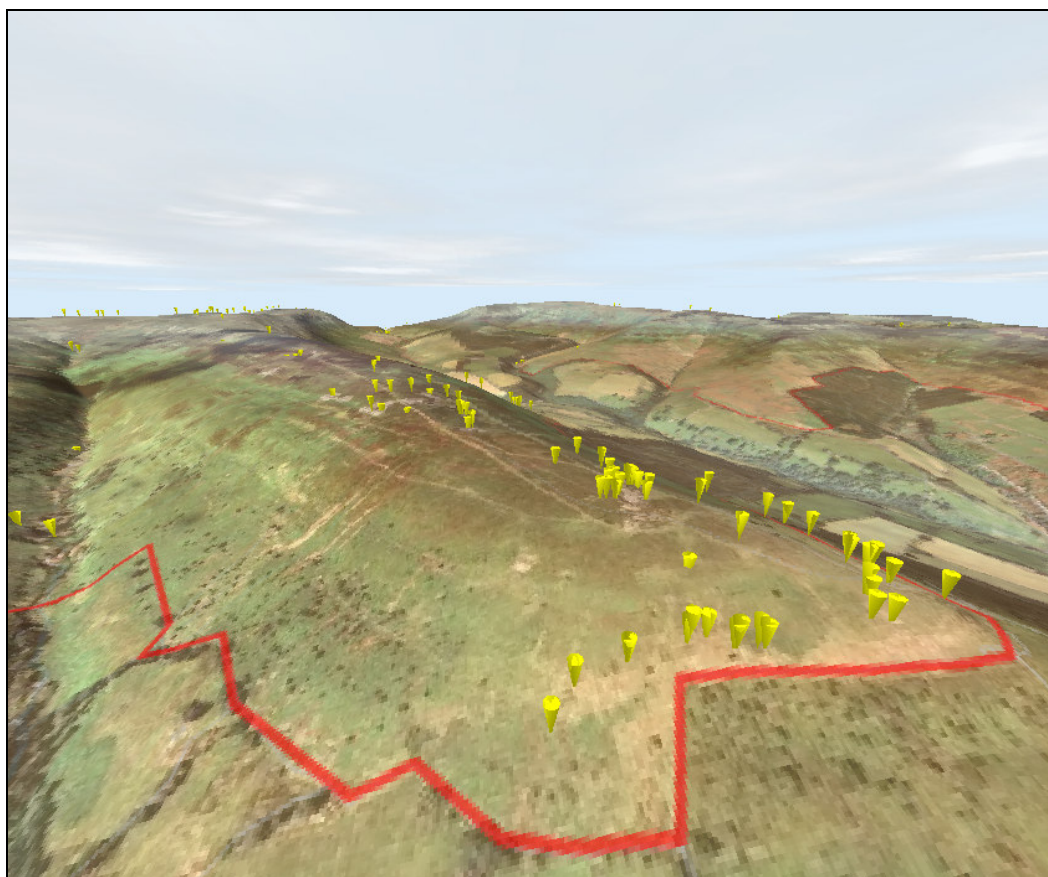


Figure 6 *The ridge of Tal Trwynau, with the locations of quarry pits and the associated huts, cairns, tracks and shelters indicated by yellow cones. The survey boundary is indicated by the red line.*

Tracks

2.59 The vast majority of the tracks recorded are long since out of use, having been used to access quarries and possibly shooting butts. Their distribution is therefore related to the spread of these sites. Most are heavily obscured by vegetation. A variety of form was encountered. Some were revetted with stone walling either downslope or upslope, some were cut into the hillside, others were embanked, and many were hollow ways. Of the latter many were faint depressions, but some were impressive cuttings as at SO 19197 24939, where the trackway is roughly 2 metres deep and 3 metres wide at the top of the hollow. A few tracks, particularly along the tops of the ridges, are still used by walkers due to the views, and for the same reason may date back thousands of years. These tracks are usually simple worn paths ranging for kilometres and are frequently marked with cairns.

Sheepfolds

2.60 Sheepfolds were scattered throughout the area, varying markedly in size and shape. A complex one including a 30 metre long cell with two creeps and a sheep dip with a revetted channel was located at SO 22789 25964.



Figure 7 *The revetted channel leading to a sheep dip beside the fold at SO 22789 25964*

Recreational and clearance cairns

2.61 Most of the cairns recorded were associated with trackways, and probably date to the post medieval period. Several of the summits in the area had piles of stones made by modern day walkers. Recreational cairns were also found within defunct quarries where there was plentiful waste material and around collapsed walls. The distribution of recreational cairns therefore correlates with the distribution of natural or reusable material. The improved fields within the survey had clearance cairns which date between the medieval period to modern day. The lower slopes of the open mountain sometimes had clearance cairns as well, indicating that the land use has changed, although over what time scale is not clear.



Figure 8 *A prominent, modern cairn built in a quarry on Tal Trwynau*

Shooting butts

2.62 Shooting butts were most commonly found in the vicinity of Pen Cerrig-calch, as there is copious amounts of outcropping rock out of which to construct the butts. These varied in form between simple hollows in the scree slopes, single curved walls and complete circles. They faced all directions, but often had a good view of the heath.

The correlation of air photo transcriptions to sites

2.63 Elements that correlated well were quarries, some structures and most of the field boundaries, some of these also correlating with field boundaries noted on 1st edition OS mapping. The record was augmented by construction details and identification of further structural units.

Response to uplands research themes

Upland prehistoric settlement from the Mesolithic period onwards, only visible through artefact scatters around upland lakes

2.64 There are few ponds in the survey area, and these are small. They lie to the northeast of Crug Mawr, and there is a possible prehistoric barrow located not far away from them on Partrishow Hill.

The structure, components and phasing of field systems in upland areas with an eye to possible early dating of some enclosures, and the presence of encroachment

2.65 There were many former boundary walls discovered which had collapsed into banks. They were located on the south facing slopes of Partrishow Hill and the west and north facing slopes of Crug Mawr, but were often very heavily obscured by vegetation. They are probably medieval or post-medieval. Early mapping can assist with dating post-medieval field systems but has been found to be of little use for earlier features. Associating field systems with date-specific structures and transport routes may be the only practical method of dating them.

The identification of upland settlement remains from periods where they are poorly represented, particularly the Bronze Age and Early Medieval periods

2.66 There is good potential for prehistoric settlement within the area covered by this survey project as generally speaking the topography is not rugged and there is plenty of outcropping



rock with which to build structures without the need to quarry into the bedrock. This is particularly the case on the western ridge of the area. There were few slopes in the area which were too steep or hazardous to negate settlement. There were more hut circles on the western ridge, although prehistoric cairns were found on both.

Prehistoric ritual landscapes and their relationships with contemporary settlement

2.67 The survey recorded a great number of cairns, but in many cases it was not possible to determine their date for certain. The definite prehistoric cairns were found throughout the survey area, including the summits of Pen Cerrig-calch, Pen Twyn Glas and Pen y Gadair Fawr; just beneath the crest of Partrishow Hill; and on a ridge protruding northwest from Pen Twyn Glas. Generally it does not seem that there is a particular correlation between the siting of these cairns and the contemporary settlements. An exception could be the cairn at SO21677 28090, which is located just north of a widespread settlement to the south of Waun Fach. The settlement appears to include several phases of occupation, and it is not certain that the cairn is prehistoric. Not far from this lies another, much larger feature which could be a long barrow, although it is in too poor a condition to tell from this survey.

2.68 The impression overall is that prehistoric settlement must have been widespread but lightweight as there are few significant traces of field systems or settlement. It is possible that the medieval and post medieval farms occupied the same sites for purely geographical reasons in which case only geophysical survey or excavation could recover traces of prehistoric predecessors.

Upland deserted settlements, particularly those of potential medieval date with cognisance of surrounding agricultural or storage features associated with the domestic buildings

2.69 A few upland deserted settlements or farmsteads were recorded during this project, for instance the ruins located in the valley above Blaen-nant. According to the HER there is a holy well at this site, although no well was recorded at the location during the survey. Besides the ruins there were, however, several former enclosure walls which survive as turfed over banks. Often air photo evidence is the first indicator of potential remains and usually identifies elements of the associated field system. Otherwise, these sites are discovered during systematic field visits to sheepfolds, where attention needs to be paid to incorporated remains of earlier structures.

The presence and extent of remains of rural industries in the uplands, particularly peat cutting, quarrying, rabbit farming and mining

2.70 Quarrying for walling stone is the main industry present in the survey area and was found throughout, though the extent of each quarry varied widely. The quarries were often accompanied by tracks, and their position on the tracks could be indicative of the nature of the working. For example, were those along the main tracks worked semi-commercially or those on the ends of small paths worked principally for one farm? There were numerous small scoops on the slopes west of Pen Cerrig-calch which could have been exploited for individual jobs, while there were several areas of extensive quarrying on the ridge of Tal Trwynau, accompanied by quarry huts, indicative of a prolonged industry.

2.71 A single possible area of peat cutting was located in the survey area at SO 21116 22929. It lies beside a track on the plateau, and is an area measuring roughly 30 metres by 60 metres. The peat is up to 1 metre deep.

Transport networks of all periods in relation to the upland areas and the inter-regional implications of these, in particular extensive remains of upland trackways and early systems of roads and tramways with their associated infrastructure

2.72 Most of the tracks in the survey area are difficult to date and are often visible for only short distances. Many in the vicinity of quarrying will date to the medieval or post-medieval period, and some were clearly very well established routes. For example, the quarry track at SO 19197 24939

is roughly 2 metres deep and 3 metres wide at the top of the hollow. Even if not used over a protracted period it must have been used very intensively and maintained. Many quarry tracks are revetted with stone walls.

2.73 Some tracks were probably established for accessing shooting butts, as these are a common feature particularly on the western ridge where there is copious outcropped rock. These might account for some of the more ephemeral trackways, as they would not be supporting such heavy traffic.

2.74 The tracks and paths that run a course along the top of both ridges are likely to have been in use since antiquity. Prehistoric cairns and mounds are located on the ridges and peaks, but the paths are also denoted by marker cairns (which are probably of various dates) and on the eastern ridge 19th century boundary stones.



Figure 9 19th Century boundary stones at SO 21305 26061

Agri-Industrial settlement patterns in contexts where farming and industrial activity coalesce

2.75 There were no contexts where these activities coalesced within the survey area.

The form and distribution of extraction landscapes and the association of defined mining areas and their mining features

2.76 There was no mining recorded in the area, but the style of quarrying varied greatly. Often small individual scoops were recorded, particularly on the slopes west of Pen Cerrig-calch. It is difficult to date these scoops, but they are likely to have been excavated for specific tasks rather than an industry. Occasionally they are located alongside boundary walls and it is clear that their function was to provide walling material.

2.77 There are several major centres of stone extraction in the survey area, including the ridge of Tal Trwynau and the slope north of Table Mountain. These quarries are large scale and include quarry buildings and waste heaps revetted with stone walling. The treatment of mounds in this way is a common feature throughout the survey area. The quarries were clearly part of an organised industry, and their location on the western ridge of the area suggests that they were



positioned to make use of the shallow bedrock. It seems likely on Tal Trwynau that the areas of quarrying were not all open at once, but that the quarrying gradually made its way northwest up the slope towards Pen Twyn Glas.

2.78 Elsewhere, often higher up the slopes, there are areas of shallow pitting spread over areas of 30 by 30 metres. They are somewhat disorganised when compared to the clearly post-medieval quarries and they could be prehistoric.

The relationship of sites to woodland, where it exists and to identified deposits of peat and areas of peat extraction or drainage

2.79 The only area of woodland in the survey area was located in the valley above Blaenau-fry at SO 20000 26700. It contained established trackways and at the valley bottom the ruins of sheepfolds.

2.80 The area of woodland was not associated with the only newly recorded possible area of peat extraction in the area. Peat is widespread on the top of the survey area, but the possible area of peat cutting was located at SO 21116 22929. It lies beside a track on the open plateau, and is an area measuring roughly 30 metres by 60 metres. The peat is between two and three feet deep.

Classification, criteria & queries

2.81 The HER sites with the incorrect locations are tabulated below. The locations were checked for possible features and none were found. The failure to find other sites could be attributable to the heavy vegetation cover, rather than incorrect co-ordinates.

HER PRN	Type	Period	Brief description	Grid Ref	What's there
72430	Chapel	Medieval	A possible chapel site	322300, 222630	Unenclosed ground on a very steep slope. No structure.
9460	House	Post Medieval	Daren Fach House Site	322585, 223585	Open mountainside. A ruin located in a field roughly 100 metres to the west is a likely candidate, suggesting the co-ordinates are incorrect.

2.82 On the southeast facing slope above Cwm Banw, the HER records there being a kidney shaped enclosure at 321635 223955 (PRN 43228) and a damaged cairn (PRN 43239) at 321595 223805. An enclosure and a damaged cairn were found, but positioned as though the co-ordinates of the two sites had been swapped. However, the sites differed enough in form to the HER records for it to be possible that they were genuinely previously unrecorded and that the sites on the HER were obscured during the survey.

Environmental potential

2.83 A pollen sampling site is located at SO 20550 28650 according to the CPAT HER. Further sampling could be worthwhile at the sites of prehistoric monuments, for instance the hut circles lying to the northwest of Pen Cerrig-calch. Beneath the peat in the area there is the possibility of relict soils. A specialist would be needed to target further sampling most effectively.



Recommendations

Documentary resource & NMRW

2.84 Explore improved areas with geophysics to see what the potential would be to locate ploughed-down monuments in these areas.

2.85 If the AP resource for these upland areas could be shared as geo-referenced images then their inclusion in a GIS would be straightforward. The information contained (vegetation and other surface details, not just archaeology) would benefit field survey.

Further study

2.86 There is potential for a combination of aerial photography and geophysical survey on improved ground to inform upon the apparent loss of monuments. Traces of monuments invisible to the eye at ground level may be visible from the air in certain conditions and geophysical survey could reveal aspects that were never visible. It is generally supposed that sites, such as prehistoric settlements, are potentially lost as ground is improved but the extent to which this occurs is not known.



6 Catalogue

NPRN	NAME	NGR	TYPE	PERIOD
268000	CWM MAWR SOUTH, CAIRN I	SO2124221540	CAIRN	Unknown
268001	CWM MAWR SOUTH, CAIRN II	SO2127121834	CAIRN	Unknown
268002	PEN CERRIG-CALCH, CAIRN III	SO2128621787	CAIRN	Unknown
268003	FOXHALL, STONE PILE I	SO2122221147	STONE PILE	Unknown
268004	CWM MAWR NORTH, CAIRN	SO2046422232	CAIRN	Unknown
268005	LLWENAU DRAW, CLEARANCE CAIRN	SO1942323037	CLEARANCE CAIRN	Unknown
268006	CWM MAWR NORTH, CLEARANCE CAIRN I	SO2025922064	CLEARANCE CAIRN	Unknown
268007	CWM MAWR NORTH, CLEARANCE CAIRN II	SO2020022010	CLEARANCE CAIRN	Unknown
268008	CWM MAWR NORTH, CLEARANCE CAIRN III	SO2022721988	CLEARANCE CAIRN	Unknown
268009	CWM MAWR NORTH, STONE PILE	SO2050122247	STONE PILE	Modern
268010	NORTH CWM CUMBETH, CLEARANCE CAIRN I	SO2163320728	CLEARANCE CAIRN	Modern?
268011	CWM MAWR NORTH, CLEARANCE CAIRN IV	SO2029422050	CLEARANCE CAIRN	Unknown
268012	CWM MAWR NORTH, CLEARANCE CAIRN V	SO2022821986	CLEARANCE CAIRN	Unknown
268013	NORTH CWM CUMBETH, CLEARANCE CAIRN II	SO2160320770	CLEARANCE CAIRN	Post Medieval
268014	LOWER FFALD FAWR, CLEARANCE CAIRN I	SO2187127337	CLEARANCE CAIRN	Post Medieval
268015	LOWER FFALD FAWR, CLEARANCE CAIRN II	SO2190827260	CLEARANCE CAIRN	Post Medieval
268016	LOWER FFALD FAWR, CLEARANCE CAIRN III	SO2190827261	CLEARANCE CAIRN	Modern?
268017	LOWER FFALD FAWR, CLEARANCE CAIRN IV	SO2190827259	CLEARANCE CAIRN	Modern?
268018	EAST SLOPE OF PEN GLOCH-Y-PIBWR, CAIRN	SO2117123359	CAIRN	Unknown
268019	PEN GLOCH-Y-PIBWR, STONE PILE I	SO2095523097	STONE PILE	Unknown
268020	PEN GLOCH-Y-PIBWR, STONE PILE II	SO2063423884	STONE PILE	Unknown
268021	PEN ALLT-MAWR, CAIRN	SO2067123870	CAIRN	Unknown
268022	PEN GLOCH-Y-PIBWR, CAIRN IV	SO2057223606	CAIRN	Unknown
268023	EAST SLOPE OF TAL TRWYNAU, CAIRN	SO2173825591	CAIRN	Unknown
268024	PEN CERRIG-CALCH, CAIRN IV	SO2200222274	CAIRN	Bronze Age?
268025	LOWER FFALD FAWR, CLEARANCE CAIRN V	SO2172627382	CLEARANCE CAIRN	Post Medieval?
268026	LOWER FFALD FAWR, CLEARANCE CAIRN VI	SO2175527372	CLEARANCE CAIRN	Modern?



268027	LOWER FFALD FAWR, CLEARANCE CAIRN VII	SO2173227118	CLEARANCE CAIRN	Modern?
268028	LOWER FFALD FAWR, CLEARANCE CAIRN VIII	SO2174227152	CLEARANCE CAIRN	Modern?
268029	MYNYDD LLYSIAU, CAIRN I	SO2044528633	CAIRN	Post Medieval
268030	MYNYDD LLYSIAU, CAIRN II	SO2077027886	CAIRN	Unknown
268031	PEN GLOCH-Y-PIBWR, CAIRN V	SO2096923121	CAIRN	Unknown
268032	PEN GLOCH-Y-PIBWR, CAIRN III	SO2083123331	CAIRN	Post Medieval?
268034	PEN Y GADAIR FAWR RIDGE, CAIRN	SO2393127610	CAIRN	Unknown
268035	PEN TWYN MAWR, CAIRN	SO2421326723	CAIRN	Unknown
268036	NANT Y GADAIR, CLEARANCE CAIRN	SO2185628289	CLEARANCE CAIRN	Post Medieval
268037	NANT Y GADAIR, CAIRN I	SO2167728090	CAIRN	Prehistoric
268038	CWM BANW, STONE PILE I	SO2272723785	STONE PILE	Modern
268039	PEN CERRIG-CALCH, STONE PILE I	SO2203122150	STONE PILE	Unknown
268040	CWM BANW, STONE PILE II	SO2271523803	STONE PILE	Post Medieval
268041	CWM BANW, STONE PILE III	SO2267923784	STONE PILE	Post Medieval
268042	DARREN FACH, STONE PILE	SO2267623912	STONE PILE	Post Medieval
268043	CERRIG-CALCH RIDGE, CAIRN I	SO2096222868	CAIRN	Post Medieval
268044	PEN CERRIG-CALCH, CAIRN V	SO2184422154	CAIRN	Unknown
268045	PEN GLOCH-Y-PIBWR, CAIRN VI	SO2083223337	CAIRN	Unknown
268046	CERRIG-CALCH RIDGE, CAIRN II	SO2119222891	CAIRN	Unknown
268047	SOUTHWEST PEN GLOCH-Y-PIBWR, CAIRN	SO1984322781	CAIRN	Unknown
268048	TABLE MOUNTAIN, STONE PILE	SO2253920695	STONE PILE	Modern
268049	PEN CERRIG-CALCH, CAIRN VI	SO2115521314	CAIRN	Unknown
268050	NORTH CWM CUMBETH, STONE PILE I	SO2146121130	STONE PILE	Unknown
268051	NORTH CWM CUMBETH, STONE PILE II	SO2222221325	STONE PILE	Post Medieval
268052	CWM MAWR SOUTH, CAIRN III	SO2127421680	CAIRN	Prehistoric
268053	FOXHALL, STONE PILE II	SO2096021227	STONE PILE	Unknown
268054	PEN CERRIG-CALCH, CAIRN VII	SO2114021386	CAIRN	Unknown
268055	PEN GWYLLT MEIRCH RIDGE, STONE PILE I	SO2532824818	STONE PILE	Post Medieval
268057	PEN GWYLLT MEIRCH RIDGE, STONE PILE II	SO2583024219	STONE PILE	Unknown
268058	NANT Y FFIN, STONE PILE I	SO2594423837	STONE PILE	Post Medieval
268059	NANT Y FFIN, STONE PILE II	SO2594023818	STONE PILE	Post Medieval



268061	CWM MILAID SOUTH, STONE PILE	SO2466121543	STONE PILE	Modern
268062	PEN TWYN GLAS, CAIRN I	SO2130325733	CAIRN	Prehistoric
268063	NEUADDFACH, CLEARANCE CAIRN I	SO1936325380	CLEARANCE CAIRN	Unknown
268064	NEUADDFACH, CLEARANCE CAIRN II	SO1934825472	CLEARANCE CAIRN	Post Medieval?
268065	PEN TWYN GLAS, CAIRN II	SO2066725188	CAIRN	Unknown
268066	PEN ALLT-MAWR RIDGE, CAIRN I	SO2068325037	CAIRN	Unknown
268067	PEN ALLT-MAWR RIDGE, CAIRN II	SO2072124744	CAIRN	Unknown
268068	UPPER WEST SLOPE OF MYNYDD LLYSIAU, STONE PILE I	SO1995228161	STONE PILE	Unknown
268069	NORTH CWM CUMBETH, WALL I	SO2142121180	WALL	Post Medieval
268070	PEN CERRIG-CALCH, SPOIL HEAP	SO2132421263	SPOIL HEAP	Post Medieval
268071	CWM MAWR SOUTH, HUT I	SO2091622270	HUT	Unknown
268072	CWM MAWR NORTH, HUT CIRCLE I	SO2061822517	HUT CIRCLE	Unknown
268073	CWM MAWR SOUTH, QUARRY SHELTER	SO2069021775	QUARRY SHELTER	Post Medieval
268074	CWM MAWR NORTH, HUT CIRCLE II	SO2064522484	HUT CIRCLE	Unknown
268075	WEST BRYNIOG, HUT CIRCLE	SO1939222825	HUT CIRCLE	Unknown
268076	CWM MAWR NORTH, CLEARANCE CAIRN VI	SO2027022235	CLEARANCE CAIRN	Unknown
268077	CWM MAWR NORTH, LINEAR CLEARANCE CAIRN	SO2034522205	LINEAR CLEARANCE CAIRN	Unknown
268078	CWM MAWR NORTH, HUT CIRCLE III	SO2047922136	HUT CIRCLE	Unknown
268079	NORTH CWM CUMBETH, GRAVE	SO2166421026	GRAVE	Unknown
268080	CWM MAWR SOUTH, SHOOTING STAND I	SO2097921507	SHOOTING STAND	Unknown
268081	NORTH CWM CUMBETH, MILITARY TRAINING SITE I	SO2179221268	MILITARY TRAINING SITE	Modern?
268082	NORTH CWM CUMBETH, MILITARY TRAINING SITE II	SO2177921231	MILITARY TRAINING SITE	Modern?
268083	NORTH CWM CUMBETH, SHOOTING STAND I	SO2149721050	SHOOTING STAND	Post Medieval?
268084	NORTH CWM CUMBETH, MILITARY STRUCTURE I	SO2166921196	MILITARY STRUCTURE	Modern?
268085	NORTH CWM CUMBETH, MILITARY TRAINING SITE III	SO2174221057	MILITARY TRAINING SITE	Modern?
268086	NORTH CWM CUMBETH, LYNCHET I	SO2157120739	LYNCHET	Iron Age?
268087	NORTH CWM CUMBETH, LYNCHET II	SO2163920757	LYNCHET	Iron Age?
268088	CWM MAWR SOUTH, SPOIL TIP	SO2069821765	SPOIL TIP	Post Medieval
268089	CWM MAWR SOUTH, QUARRY I	SO2069621689	QUARRY	Unknown
268090	NORTH CWM CUMBETH, BANK (EARTHWORK)	SO2161920748	BANK (EARTHWORK)	Unknown
268091	FOXHALL, QUARRY I	SO2139320861	QUARRY	Unknown



268092	CWM NANTYGARREG, DITCH I	SO1986724377	DITCH	Post Medieval?
268093	LOWER FFALD FAWR, WALL	SO2201927533	WALL	Post Medieval
268094	NORTHEAST SLOPE OF PEN CERRIG-CALCH, STRUCTURE	SO2265822516	STRUCTURE	Unknown
268095	EAST SLOPE OF PEN CERRIG-CALCH, MILITARY TRAINING SITE I	SO2272122001	MILITARY TRAINING SITE	Modern?
268096	EAST SLOPE OF PEN CERRIG-CALCH, MILITARY STRUCTURE I	SO2261622158	MILITARY STRUCTURE	Modern?
268097	EAST SLOPE OF PEN CERRIG-CALCH, MILITARY TRAINING SITE II	SO2261122112	MILITARY TRAINING SITE	Modern?
268098	EAST SLOPE OF PEN CERRIG-CALCH, MILITARY TRAINING SITE III	SO2262322155	MILITARY TRAINING SITE	Modern?
268099	EAST SLOPE OF PEN CERRIG-CALCH, MILITARY TRAINING SITE IV	SO2260422086	MILITARY TRAINING SITE	Modern?
268100	EAST SLOPE OF PEN CERRIG-CALCH, MILITARY TRAINING SITE V	SO2258622104	MILITARY TRAINING SITE	Modern?
268101	PEN CERRIG-CALCH, SHOOTING STAND I	SO2262422268	SHOOTING STAND	Modern?
268103	PEN GLOCH-Y-PIBWR, MILITARY TRAINING SITE	SO2062823892	MILITARY TRAINING SITE	Modern?
268104	NANT Y GADAIR, BUILDING PLATFORM I	SO2168628051	BUILDING PLATFORM	Unknown
268105	FOXHALL, MILITARY STRUCTURE I	SO2110521113	MILITARY STRUCTURE	Modern?
268106	NORTH CWM CUMBETH, MILITARY STRUCTURE II	SO2149921156	MILITARY STRUCTURE	Modern?
268107	NORTH CWM CUMBETH, MILITARY TRAINING SITE IV	SO2160021420	MILITARY TRAINING SITE	Modern?
268108	NANT Y GADAIR, FARMSTEAD	SO2169828037	FARMSTEAD	Post Medieval?
268109	NANT Y GADAIR, BUILDING PLATFORM II	SO2168627991	BUILDING PLATFORM	Unknown
268110	NANT Y GADAIR, SHEEP DIP I	SO2168628031	SHEEP DIP	Post Medieval?
268111	NANT Y GADAIR, SHEEP PEN	SO2168927921	SHEEP PEN	Modern?
268112	FFALD UCHAF, WALL I	SO2070429018	WALL	Unknown
268113	MYNYDD LLYSIAU, SHELTER	SO2049828387	SHELTER	Post Medieval?
268114	UPPER WEST SLOPE OF MYNYDD LLYSIAU, SHEEP FOLD	SO2073127446	SHEEP FOLD	Unknown
268115	UPPER WEST SLOPE OF MYNYDD LLYSIAU, HUT	SO2046828065	HUT	Unknown
268116	EAST SLOPE OF PEN CERRIG-CALCH, MILITARY TRAINING SITE VI	SO2271822012	MILITARY TRAINING SITE	Modern?
268117	EAST SLOPE OF PEN CERRIG-CALCH, SHOOTING STAND I	SO2269821971	SHOOTING STAND	Modern?
268118	EAST SLOPE OF PEN CERRIG-CALCH, SHOOTING STAND II	SO2270121971	SHOOTING STAND	Modern?
268119	EAST SLOPE OF PEN CERRIG-CALCH, SHOOTING STAND III	SO2267321930	SHOOTING STAND	Modern?
268120	EAST SLOPE OF PEN CERRIG-CALCH, SHOOTING STAND IV	SO2268721934	SHOOTING STAND	Modern?
268121	EAST SLOPE OF PEN CERRIG-CALCH, SHOOTING STAND V	SO2258321920	SHOOTING STAND	Modern?
268122	EAST SLOPE OF PEN CERRIG-CALCH, SHOOTING STAND VI	SO2254021819	SHOOTING STAND	Modern?
268123	PEN CERRIG-CALCH, WALL	SO2211522257	WALL	Unknown



268124	FFALD UCHAF, HOUSE PLATFORM	SO2153927970	HOUSE PLATFORM	Unknown
268125	EAST SLOPE OF PEN CERRIG-CALCH, QUARRY BUILDING I	SO2313422240	QUARRY BUILDING	Post Medieval?
268126	NORTHEAST SLOPE OF PEN CERRIG-CALCH, HUT I	SO2253923039	HUT	Post Medieval?
268127	EAST SLOPE OF PEN GLOCH-Y-PIBWR, WALL I	SO2190823520	WALL	Post Medieval?
268128	FFALD UCHAF, SHEEP PEN I	SO2203927566	SHEEP PEN	Post Medieval
268129	LOWER FFALD FAWR, BRIDGE	SO2216626271	BRIDGE	Post Medieval
268130	NANT Y GADAIR, SHELTER I	SO2169627938	SHELTER	Post Medieval
268131	FFALD UCHAF, WALL II	SO2138328068	WALL	Post Medieval
268132	NANT Y GADAIR, HUT I	SO2168328021	HUT	Unknown
268133	EAST SLOPE OF PEN GLOCH-Y-PIBWR, HUT I	SO2125223598	HUT	Unknown
268134	NORTHEAST SLOPE OF PEN CERRIG-CALCH, SHOOTING STAND I	SO2249222531	SHOOTING STAND	Post Medieval?
268135	NORTHEAST SLOPE OF PEN CERRIG-CALCH, SHOOTING STAND II	SO2260922454	SHOOTING STAND	Post Medieval?
268136	EAST SLOPE OF PEN CERRIG-CALCH, SHOOTING STAND VII	SO2264222178	SHOOTING STAND	Post Medieval?
268137	EAST SLOPE OF PEN CERRIG-CALCH, MILITARY STRUCTURE II	SO2258122076	MILITARY STRUCTURE	Modern?
268138	PEN CERRIG-CALCH, STONE PILE II	SO2150122801	STONE PILE	Post Medieval?
268139	EAST SLOPE OF PEN GLOCH-Y-PIBWR, WALL II	SO2081323732	WALL	Post Medieval?
268140	EAST SLOPE OF PEN GLOCH-Y-PIBWR, SHOOTING STAND I	SO2082523807	SHOOTING STAND	Post Medieval
268141	PEN ALLT-MAWR, SHOOTING STAND I	SO2082623879	SHOOTING STAND	Post Medieval
268142	PEN Y GADAIR FAWR RIDGE, CULTIVATION MARKS	SO2343528385	CULTIVATION MARKS	Modern
268143	GARGWY FACH, STONE	SO2260027641	STONE	Unknown
268144	GADAIR FAWR, CLEARANCE CAIRN	SO2192828328	CLEARANCE CAIRN	Unknown
268145	NANT Y GADAIR, HUT II	SO2164128248	HUT	Unknown
268146	NANT Y GADAIR, SHEEP DIP II	SO2164228265	SHEEP DIP	Unknown
268147	NANT Y GADAIR, WALL	SO2163228288	WALL	Unknown
268148	GADAIR FAWR, SHEEP PEN	SO2244427708	SHEEP PEN	Post Medieval
268149	CWM BANW, SHELTER I	SO2286123609	SHELTER	Post Medieval
268150	CWM BANW, QUARRY I	SO2269723833	QUARRY	Post Medieval
268151	CWM BANW, QUARRY BUILDING	SO2269423806	QUARRY BUILDING	Post Medieval
268152	CWM BANW, STONE PILE IV	SO2269623791	STONE PILE	Modern?
268153	CWM BANW, STONE PILE V	SO2268623802	STONE PILE	Post Medieval
268154	TABLE MOUNTAIN, SHELTER I	SO2258920712	SHELTER	Modern?



268155	TABLE MOUNTAIN, EARTHWORK I	SO2259220700	EARTHWORK	Post Medieval
268156	EAST SLOPE OF PEN CERRIG-CALCH, WALL I	SO2271521207	WALL	Unknown
268157	EAST SLOPE OF PEN CERRIG-CALCH, HUT CIRCLE	SO2300321577	HUT CIRCLE	Unknown
268158	EAST SLOPE OF PEN CERRIG-CALCH, WALL II	SO2313321680	WALL	Unknown
268159	NORTHEAST SLOPE OF PEN CERRIG-CALCH, FIELD SYSTEM	SO2331622548	FIELD SYSTEM	Unknown
268160	EAST SLOPE OF PEN CERRIG-CALCH, SHEEP FOLD	SO2258821614	SHEEP FOLD	Post Medieval
268161	EAST SLOPE OF PEN GLOCH-Y-PIBWR, BANK (EARTHWORK) I	SO2205223465	BANK (EARTHWORK)	Unknown
268162	EAST SLOPE OF PEN GLOCH-Y-PIBWR, SHEEP FOLD I	SO2194123484	SHEEP FOLD	Post Medieval
268163	EAST SLOPE OF PEN GLOCH-Y-PIBWR, SHEEP PEN	SO2192123496	SHEEP PEN	Unknown
268164	NANT Y GADAIR, CAIRN II	SO2168728064	CAIRN	Unknown
268165	NANT Y GADAIR, SHELTER II	SO2170027949	SHELTER	Post Medieval
268166	NANT Y GADAIR, LONGHOUSE	SO2170027944	LONGHOUSE	Medieval?
268167	FFALD UCHAF, SHEEP PEN II	SO2156427941	SHEEP PEN	Unknown
268168	FFALD UCHAF, LONGHOUSE	SO2144528053	LONGHOUSE	Unknown
268169	MYNYDD LLYSIAU, WALL	SO2045228586	WALL	Post Medieval
268170	CWM NANT-YR-YCHEN, QUARRY I	SO2106527197	QUARRY	Post Medieval
268171	EAST SLOPE OF PEN GLOCH-Y-PIBWR, SHELTER	SO2123323277	SHELTER	Post Medieval
268172	NORTHEAST SLOPE OF PEN CERRIG-CALCH, HUT II	SO2175423014	HUT	Unknown
268173	PEN GLOCH-Y-PIBWR, SHELTER II	SO2096323123	SHELTER	Post Medieval
268174	DARREN FACH, QUARRY I	SO2289123690	QUARRY	Post Medieval
268175	CWM BANW, STONE PILE VI	SO2267223784	STONE PILE	Post Medieval
268176	CWM BANW, SPOIL HEAP I	SO2271823769	SPOIL HEAP	Post Medieval
268177	CWM BANW, SHELTER II	SO2271723792	SHELTER	Post Medieval
268178	CWM BANW, SPOIL HEAP II	SO2271523808	SPOIL HEAP	Post Medieval
268179	CWM BANW, SHELTER III	SO2268623774	SHELTER	Post Medieval
268180	DARREN FACH, SHELTER I	SO2269923874	SHELTER	Post Medieval
268181	EAST SLOPE OF PEN CERRIG-CALCH, QUARRY I	SO2270021179	QUARRY	Post Medieval
268182	EAST SLOPE OF PEN CERRIG-CALCH, HUT I	SO2303321880	HUT	Post Medieval
268183	CWM CHARLES, SHEEP FOLD	SO2018624839	SHEEP FOLD	Post Medieval
268184	CWM CHARLES, NON ANTIQUITY	SO2004924968	NON ANTIQUITY	Modern
268185	CWM CHARLES, SHELTER I	SO2009525094	SHELTER	Post Medieval



268186	CWM NANTYGARREG, MILITARY STRUCTURE I	SO1998323910	MILITARY STRUCTURE	Modern?
268187	TABLE MOUNTAIN, HUT CIRCLE	SO2253720658	HUT CIRCLE	Iron Age
268188	TABLE MOUNTAIN, EARTHWORK II	SO2252620743	EARTHWORK	Iron Age
268189	TABLE MOUNTAIN, SHELTER II	SO2254220744	SHELTER	Unknown
268191	NORTH CWM CUMBETH, RIDGE AND FURROW	SO2245720896	RIDGE AND FURROW	Medieval?
268192	EAST SLOPE OF PEN CERRIG-CALCH, QUARRY BUILDING II	SO2278020971	QUARRY BUILDING	Post Medieval
268193	EAST SLOPE OF PEN CERRIG-CALCH, QUARRY II	SO2268521217	QUARRY	Post Medieval
268194	EAST SLOPE OF PEN CERRIG-CALCH, SHELTER	SO2265921592	SHELTER	Unknown
268195	EAST SLOPE OF PEN CERRIG-CALCH, QUARRY III	SO2238821474	QUARRY	Unknown
268196	PEN CERRIG-CALCH, SHELTER I	SO2254222097	SHELTER	Post Medieval
268197	PEN CERRIG-CALCH, MILITARY STRUCTURE I	SO2229122168	MILITARY STRUCTURE	Modern?
268198	PEN CERRIG-CALCH, MILITARY STRUCTURE II	SO2222422181	MILITARY STRUCTURE	Modern?
268199	PEN CERRIG-CALCH, STONE PILE III	SO2211822295	STONE PILE	Modern
268200	PEN CERRIG-CALCH, STONE PILE IV	SO2206022328	STONE PILE	Post Medieval
268201	PEN CERRIG-CALCH, MILITARY TRAINING SITE I	SO2218322291	MILITARY TRAINING SITE	Modern?
268202	PEN CERRIG-CALCH, STONE PILE V	SO2216722302	STONE PILE	Unknown
268203	PEN CERRIG-CALCH, MILITARY STRUCTURE III	SO2216322310	MILITARY STRUCTURE	Modern?
268204	PEN CERRIG-CALCH, MILITARY TRAINING SITE II	SO2206822367	MILITARY TRAINING SITE	Modern?
268205	PEN CERRIG-CALCH, MILITARY STRUCTURE IV	SO2201722388	MILITARY STRUCTURE	Modern?
268206	PEN CERRIG-CALCH, SHOOTING STAND II	SO2217422283	SHOOTING STAND	Post Medieval
268207	PEN CERRIG-CALCH, SHOOTING STAND III	SO2217122286	SHOOTING STAND	Post Medieval
268208	PEN CERRIG-CALCH, MILITARY TRAINING SITE III	SO2221322268	MILITARY TRAINING SITE	Modern?
268209	PEN CERRIG-CALCH, SHELTER II	SO2223222246	SHELTER	Unknown
268210	PEN CERRIG-CALCH, MILITARY TRAINING SITE IV	SO2223722254	MILITARY TRAINING SITE	Modern?
268211	PEN CERRIG-CALCH, MILITARY STRUCTURE V	SO2229922193	MILITARY STRUCTURE	Modern?
268212	PEN CERRIG-CALCH, SHOOTING STAND IV	SO2230222204	SHOOTING STAND	Post Medieval
268213	NORTHEAST SLOPE OF PEN CERRIG-CALCH, HOUSE	SO2327022741	HOUSE	Post Medieval
268214	NORTHEAST SLOPE OF PEN CERRIG-CALCH, QUARRY I	SO2318322810	QUARRY	Post Medieval
268215	NORTHEAST SLOPE OF PEN CERRIG-CALCH, QUARRY II	SO2305922692	QUARRY	Post Medieval
268216	EAST SLOPE OF PEN CERRIG-CALCH, QUARRY IV	SO2326422271	QUARRY	Unknown
268217	EAST SLOPE OF PEN CERRIG-CALCH, MILITARY TRAINING SITE VII	SO2259621976	MILITARY TRAINING SITE	Modern?



268218	EAST SLOPE OF PEN CERRIG-CALCH, CULVERT	SO2323222067	CULVERT	Post Medieval
268219	EAST SLOPE OF PEN CERRIG-CALCH, MILITARY STRUCTURE III	SO2257922000	MILITARY STRUCTURE	Modern?
268220	CWM NANTYGARREG, DITCH II	SO1984724182	DITCH	Unknown
268221	CERRIG-CALCH RIDGE, SHOOTING STAND	SO2098322830	SHOOTING STAND	Post Medieval
268222	PEN GLOCH-Y-PIBWR, SHOOTING STAND I	SO2088822975	SHOOTING STAND	Post Medieval
268223	PEN GLOCH-Y-PIBWR, SHELTER III	SO2027823157	SHELTER	Post Medieval
268224	PEN GLOCH-Y-PIBWR, SHOOTING STAND II	SO2023823162	SHOOTING STAND	Post Medieval
268225	PEN GLOCH-Y-PIBWR, SHOOTING STAND III	SO2017323183	SHOOTING STAND	Post Medieval
268226	PEN CERRIG-CALCH, QUARRY I	SO2139422622	QUARRY	Post Medieval
268227	PEN CERRIG-CALCH, MILITARY STRUCTURE VI	SO2193222538	MILITARY STRUCTURE	Modern?
268228	PEN CERRIG-CALCH, MILITARY STRUCTURE VII	SO2201222499	MILITARY STRUCTURE	Modern?
268229	CWM NANTYGARREG, MILITARY TRAINING SITE I	SO1992523854	MILITARY TRAINING SITE	Modern?
268230	CWM NANTYGARREG, HUT I	SO1980623934	HUT	Post Medieval
268231	CWM NANTYGARREG, SHEEP DIP	SO1979923934	SHEEP DIP	Post Medieval
268232	CWM NANTYGARREG, SHOOTING STAND I	SO2014823918	SHOOTING STAND	Post Medieval
268233	CWM NANTYGARREG, MILITARY TRAINING SITE II	SO2023823683	MILITARY TRAINING SITE	Modern?
268234	CWM NANTYGARREG, HUT CIRCLE	SO2003223399	HUT CIRCLE	Unknown
268235	CWM NANTYGARREG, SHOOTING STAND II	SO2012823567	SHOOTING STAND	Post Medieval
268236	CWM NANTYGARREG, MILITARY TRAINING SITE III	SO2006923598	MILITARY TRAINING SITE	Modern?
268237	CWM NANTYGARREG, MILITARY TRAINING SITE IV	SO2006323588	MILITARY TRAINING SITE	Modern?
268238	CWM NANTYGARREG, TRACKWAY I	SO2011323634	TRACKWAY	Post Medieval
268239	CWM NANTYGARREG, MILITARY STRUCTURE II	SO2013423658	MILITARY STRUCTURE	Modern?
268240	CWM NANTYGARREG, SHOOTING STAND III	SO2040523777	SHOOTING STAND	Post Medieval
268241	CWM NANTYGARREG, MILITARY STRUCTURE III	SO2046123852	MILITARY STRUCTURE	Modern?
268242	LLWENAU DRAW, CAIRN	SO1972023128	CAIRN	Prehistoric
268243	LLWENAU DRAW, SHOOTING STAND I	SO1995923266	SHOOTING STAND	Post Medieval
268244	LLWENAU DRAW, SHELTER I	SO1991223237	SHELTER	Post Medieval
268245	LLWENAU DRAW, STRUCTURE	SO1985923227	STRUCTURE	Post Medieval
268246	CWM NANTYGARREG, SHOOTING STAND IV	SO2028923571	SHOOTING STAND	Post Medieval
268247	CWM NANTYGARREG, MILITARY STRUCTURE IV	SO2048823805	MILITARY STRUCTURE	Modern?
268248	WEST BRYNIOG, QUARRY I	SO1891422870	QUARRY	Post Medieval



268249	WEST BRYNIOG, QUARRY II	SO1896922729	QUARRY	Post Medieval
268250	LLWENAU DRAW, SHELTER II	SO1970523575	SHELTER	Post Medieval?
268251	LLWENAU DRAW, SHELTER III	SO1960623614	SHELTER	Modern
268252	CWM NANTYGARREG, TRACKWAY II	SO1949523824	TRACKWAY	Post Medieval
268253	LLWENAU DRAW, BANK (EARTHWORK)	SO1897223102	BANK (EARTHWORK)	Unknown
268254	LLWENAU DRAW, SHELTER IV	SO1967823516	SHELTER	Post Medieval
268255	LLWENAU DRAW, SHELTER V	SO1967523507	SHELTER	Post Medieval
268256	WEST BRYNIOG, QUARRY III	SO1890022823	QUARRY	Post Medieval
268257	LLWENAU DRAW, SPOIL HEAP	SO1903022975	SPOIL HEAP	Post Medieval?
268258	LLWENAU DRAW, SHOOTING STAND II	SO1955723634	SHOOTING STAND	Unknown
268259	LLWENAU DRAW, QUARRY I	SO1959223559	QUARRY	Post Medieval
268260	LLWENAU DRAW, QUARRY II	SO1916522956	QUARRY	Post Medieval
268261	CWM MAWR SOUTH, ENCLOSURE	SO2107122089	ENCLOSURE	Unknown
268262	CERRIG-CALCH RIDGE, HUT CIRCLE I	SO2105422717	HUT CIRCLE	Bronze Age
268263	PEN GLOCH-Y-PIBWR, STONE PILE III	SO2088522964	STONE PILE	Post Medieval
268264	PEN CERRIG-CALCH, MILITARY TRAINING SITE V	SO2195222528	MILITARY TRAINING SITE	Modern?
268265	PEN CERRIG-CALCH, MILITARY STRUCTURE VIII	SO2199222505	MILITARY STRUCTURE	Modern?
268266	PEN CERRIG-CALCH, MILITARY STRUCTURE IX	SO2154922126	MILITARY STRUCTURE	Modern?
268267	PEN CERRIG-CALCH, MILITARY TRAINING SITE VI	SO2153822148	MILITARY TRAINING SITE	Modern?
268268	PEN GLOCH-Y-PIBWR, CAIRN VII	SO2024923261	CAIRN	Post Medieval
268269	PEN GLOCH-Y-PIBWR, SHELTER IV	SO2015723180	SHELTER	Unknown
268270	PEN GLOCH-Y-PIBWR, MILITARY STRUCTURE I	SO2026723203	MILITARY STRUCTURE	Modern?
268271	PEN GLOCH-Y-PIBWR, MILITARY STRUCTURE II	SO2051923214	MILITARY STRUCTURE	Modern?
268272	PEN GLOCH-Y-PIBWR, SHOOTING STAND IV	SO2076923089	SHOOTING STAND	Post Medieval
268273	CWM MAWR SOUTH, BANKED ENCLOSURE	SO2106422120	BANKED ENCLOSURE	Post Medieval
268274	CERRIG-CALCH RIDGE, HUT CIRCLE II	SO2101522792	HUT CIRCLE	Bronze Age
268275	PEN GLOCH-Y-PIBWR, SHELTER V	SO2061323165	SHELTER	Post Medieval
268276	PEN GLOCH-Y-PIBWR, QUARRY SHELTER	SO2060523182	QUARRY SHELTER	Post Medieval
268277	PEN GLOCH-Y-PIBWR, CAIRN VIII	SO2021123215	CAIRN	Unknown
268278	PEN GLOCH-Y-PIBWR, SHELTER VI	SO2020923213	SHELTER	Post Medieval
268279	CERRIG-CALCH RIDGE, PEAT CUTTING	SO2111622929	PEAT CUTTING	Unknown



268282	CWM MAWR NORTH, MILITARY STRUCTURE I	SO2057123005	MILITARY STRUCTURE	Modern?
268283	CWM MAWR NORTH, MILITARY STRUCTURE II	SO2045523020	MILITARY STRUCTURE	Modern?
268284	FOXHALL, QUARRY BUILDING I	SO2046721098	QUARRY BUILDING	Post Medieval
268285	CWM MAWR NORTH, HUT I	SO2093222516	HUT	Post Medieval
268286	PEN GLOCH-Y-PIBWR, HUT CIRCLE	SO2013623132	HUT CIRCLE	Unknown
268287	CWM MAWR NORTH, HUT CIRCLE IV	SO2016323026	HUT CIRCLE	Prehistoric
268288	CWM MAWR NORTH, HUT CIRCLE V	SO2031023022	HUT CIRCLE	Prehistoric
268289	FOXHALL, QUARRY II	SO2141220980	QUARRY	Post Medieval
268290	FOXHALL, QUARRY III	SO2140020961	QUARRY	Post Medieval
268291	CWM MAWR NORTH, HUT CIRCLE VI	SO2046622231	HUT CIRCLE	Bronze Age?
268292	SOUTHWEST PEN GLOCH-Y-PIBWR, QUARRY I	SO1999422947	QUARRY	Post Medieval
268293	CWM MAWR NORTH, WALL I	SO1989422800	WALL	Post Medieval
268294	SOUTHWEST PEN GLOCH-Y-PIBWR, QUARRY II	SO1982122819	QUARRY	Post Medieval
268295	CWM MAWR NORTH, ENCLOSURE	SO2090822552	ENCLOSURE	Multiperiod
268296	CWM MAWR NORTH, WALL II	SO2078822767	WALL	Unknown
268297	CWM MAWR NORTH, WALL III	SO2060622900	WALL	Post Medieval
268298	CWM MAWR NORTH, HUT II	SO2053722879	HUT	Post Medieval
268299	CWM MAWR NORTH, SHOOTING STAND I	SO2052922980	SHOOTING STAND	Post Medieval
268300	CWM MAWR NORTH, MILITARY STRUCTURE III	SO2049922989	MILITARY STRUCTURE	Modern?
268301	CWM MAWR NORTH, MILITARY STRUCTURE IV	SO2051823002	MILITARY STRUCTURE	Modern?
268302	CWM MAWR NORTH, MILITARY STRUCTURE V	SO2034722961	MILITARY STRUCTURE	Modern?
268303	CWM MAWR NORTH, STRUCTURE	SO2027822997	STRUCTURE	Unknown
268304	CWM MAWR NORTH, SHEEP FOLD I	SO2016723005	SHEEP FOLD	Post Medieval
268305	SOUTHWEST PEN GLOCH-Y-PIBWR, SHELTER	SO2018323070	SHELTER	Unknown
268306	SOUTHWEST PEN GLOCH-Y-PIBWR, HUT CIRCLE	SO2013223038	HUT CIRCLE	Prehistoric
268307	CWM MAWR SOUTH, MILITARY STRUCTURE I	SO2096022402	MILITARY STRUCTURE	Modern?
268308	CWM MAWR SOUTH, MILITARY STRUCTURE II	SO2096722443	MILITARY STRUCTURE	Modern?
268309	CWM MAWR SOUTH, MILITARY STRUCTURE III	SO2098022458	MILITARY STRUCTURE	Modern?
268310	CWM MAWR NORTH, SHEEP FOLD II	SO2096722616	SHEEP FOLD	Post Medieval
268311	CWM MAWR NORTH, SHOOTING STAND II	SO2072322942	SHOOTING STAND	Post Medieval
268312	CWM MAWR NORTH, MILITARY TRAINING SITE	SO2029723086	MILITARY TRAINING SITE	Modern?



268313	CWM MAWR NORTH, MILITARY STRUCTURE VI	SO2029723079	MILITARY STRUCTURE	Modern?
268314	CWM MAWR NORTH, SHOOTING STAND III	SO2024023080	SHOOTING STAND	Post Medieval
268315	TABLE MOUNTAIN, STONE I	SO2257520337	STONE	Unknown
268316	TABLE MOUNTAIN, QUARRY I	SO2253320345	QUARRY	Unknown
268317	TABLE MOUNTAIN, STONE II	SO2256320339	STONE	Unknown
268318	TABLE MOUNTAIN, QUARRY II	SO2248520410	QUARRY	Unknown
268319	TABLE MOUNTAIN, QUARRY III	SO2249120412	QUARRY	Unknown
268320	TABLE MOUNTAIN, TRACKWAY I	SO2258520682	TRACKWAY	Iron Age
268321	TABLE MOUNTAIN, QUARRY IV	SO2264920840	QUARRY	Unknown
268322	PEN CERRIG-CALCH, QUARRY II	SO2132321257	QUARRY	Post Medieval
268323	FOXHALL, SHELTER I	SO2108221203	SHELTER	Modern
268324	CWM MAWR SOUTH, SHEPHERDS HUT	SO2113521950	SHEPHERDS HUT	Post Medieval
268325	NORTH CWM CUMBETH, CAIRN	SO2216421392	CAIRN	Prehistoric
268326	NORTH CWM CUMBETH, STONE PILE III	SO2216521410	STONE PILE	Unknown
268327	CWM MAWR SOUTH, MILITARY STRUCTURE IV	SO2127421749	MILITARY STRUCTURE	Modern?
268328	CWM MAWR SOUTH, MILITARY STRUCTURE V	SO2126521713	MILITARY STRUCTURE	Modern?
268329	CWM MAWR SOUTH, SHOOTING STAND II	SO2126721699	SHOOTING STAND	Post Medieval
268330	PEN CERRIG-CALCH, MILITARY STRUCTURE X	SO2248322166	MILITARY STRUCTURE	Modern?
268331	PEN CERRIG-CALCH, QUARRY III	SO2234321724	QUARRY	Post Medieval
268332	PEN CERRIG-CALCH, QUARRY IV	SO2192721694	QUARRY	Post Medieval
268333	FOXHALL, SHELTER II	SO2111921188	SHELTER	Modern
268334	NORTH CWM CUMBETH, MILITARY TRAINING SITE V	SO2152221344	MILITARY TRAINING SITE	Modern?
268335	NORTH CWM CUMBETH, MILITARY TRAINING SITE VI	SO2158621228	MILITARY TRAINING SITE	Modern?
268336	FOXHALL, QUARRY IV	SO2102720955	QUARRY	Post Medieval
268337	NORTH CWM CUMBETH, SHOOTING STAND II	SO2141821327	SHOOTING STAND	Unknown
268338	NORTH CWM CUMBETH, MILITARY TRAINING SITE VII	SO2151121431	MILITARY TRAINING SITE	Modern?
268339	NORTH CWM CUMBETH, MILITARY TRAINING SITE VIII	SO2149321447	MILITARY TRAINING SITE	Modern?
268340	NORTH CWM CUMBETH, SHELTER	SO2143921395	SHELTER	Unknown
268341	NORTH CWM CUMBETH, MILITARY TRAINING SITE IX	SO2158921203	MILITARY TRAINING SITE	Modern?
268342	FOXHALL, MILITARY STRUCTURE I	SO2118821030	MILITARY STRUCTURE	Modern?
268343	FOXHALL, MILITARY TRAINING SITE I	SO2118521014	MILITARY TRAINING SITE	Modern?



268344	FOXHALL, MILITARY TRAINING SITE II	SO2118421000	MILITARY TRAINING SITE	Modern?
268345	FOXHALL, CAIRN	SO2118520968	CAIRN	Unknown
268346	FOXHALL, MILITARY TRAINING SITE III	SO2122320979	MILITARY TRAINING SITE	Modern?
268347	FOXHALL, MILITARY TRAINING SITE IV	SO2122520967	MILITARY TRAINING SITE	Modern?
268348	PEN CERRIG-CALCH, STONE PILE VI	SO2113721267	STONE PILE	Unknown
268349	PEN CERRIG-CALCH, MILITARY STRUCTURE XI	SO2114121271	MILITARY STRUCTURE	Modern?
268350	PEN CERRIG-CALCH, SHOOTING STAND V	SO2250521938	SHOOTING STAND	Post Medieval
268351	PEN CERRIG-CALCH, QUARRY V	SO2241821849	QUARRY	Post Medieval
268352	CWM MAWR SOUTH, SHOOTING STAND III	SO2109621511	SHOOTING STAND	Post Medieval
268353	CWM MAWR SOUTH, MILITARY TRAINING SITE I	SO2103821504	MILITARY TRAINING SITE	Modern?
268354	CWM MAWR SOUTH, SHOOTING STAND IV	SO2128321756	SHOOTING STAND	Post Medieval
268355	CWM MAWR SOUTH, SHOOTING STAND V	SO2126421692	SHOOTING STAND	Post Medieval
268356	CWM MAWR SOUTH, MILITARY STRUCTURE VI	SO2111121463	MILITARY STRUCTURE	Modern?
268357	NORTH CWM CUMBETH, SPOIL HEAP	SO2197921008	SPOIL HEAP	Post Medieval
268358	FOXHALL, SHELTER III	SO2076421184	SHELTER	Post Medieval
268359	EAST SLOPE OF PEN GLOCH-Y-PIBWR, FIELD SYSTEM	SO2131523514	FIELD SYSTEM	Unknown
268360	NORTH CWM CUMBETH, QUARRY I	SO2218821111	QUARRY	Post Medieval
268361	CWN FFRWD, MARKER STONE	SO2619723205	MARKER STONE	Post Medieval
268362	BLAEN NANT MAIR, BANKED ENCLOSURE	SO2671522567	BANKED ENCLOSURE	Unknown
268363	BLAEN NANT MAIR, HOUSE I	SO2661122478	HOUSE	Post Medieval?
268364	BLAEN NANT MAIR, HOUSE II	SO2664222471	HOUSE	Post Medieval?
268365	BLAEN NANT MAIR, BOUNDARY BANK I	SO2676522529	BOUNDARY BANK	Unknown
268366	BLAEN NANT MAIR, BOUNDARY BANK II	SO2677922500	BOUNDARY BANK	Post Medieval?
268367	BLAEN NANT MAIR, QUARRY I	SO2736722901	QUARRY	Post Medieval
268368	LLWYN-Y-BRAIN, SPRING	SO2750922990	SPRING	Unknown
268369	LLWYN-Y-BRAIN, BANKED ENCLOSURE	SO2744723017	BANKED ENCLOSURE	Post Medieval
268370	CWN FFRWD, BANK (EARTHWORK) I	SO2670523308	BANK (EARTHWORK)	Unknown
268371	CWN FFRWD, HUT	SO2659623274	HUT	Post Medieval
268372	CWN FFRWD, BANK (EARTHWORK) II	SO2660923260	BANK (EARTHWORK)	Post Medieval
268373	NANT Y YCHEN, STONE PILE	SO2394925227	STONE PILE	Post Medieval
268374	NANT Y COY, HOUSE PLATFORM	SO2365024872	HOUSE PLATFORM	Unknown



268375	NANT Y COY, BANKED ENCLOSURE	SO2345924859	BANKED ENCLOSURE	Post Medieval
268376	NANT Y COY, HUT I	SO2370025155	HUT	Post Medieval
268377	NANT Y COY, HUT II	SO2358325407	HUT	Post Medieval
268378	NANT Y COY, HUT III	SO2361325488	HUT	Post Medieval
268379	NANT Y COY, SHEEP FOLD I	SO2375025712	SHEEP FOLD	Post Medieval
268380	NANT Y COY, DITCH	SO2318625598	DITCH	Post Medieval
268381	NANT Y YCHEN, HUT	SO2449225049	HUT	Post Medieval
268382	NANT Y YCHEN, WALL I	SO2438524669	WALL	Post Medieval
268383	NANT Y YCHEN, WALL II	SO2429424510	WALL	Post Medieval
268384	NANT Y YCHEN, SHELTER	SO2432224369	SHELTER	Post Medieval
268385	NANT Y YCHEN, QUARRY I	SO2435024387	QUARRY	Post Medieval
268386	PEN GWYLLT MEIRCH RIDGE, NON ANTIQUITY	SO2572324388	NON ANTIQUITY	Modern
268387	NANT Y FFIN, MARKER STONE I	SO2588023819	MARKER STONE	Post Medieval
268388	NANT Y FFIN, EARTHWORK	SO2597123812	EARTHWORK	Unknown
268389	DISGWYLF, MARKER STONE	SO2600123540	MARKER STONE	Post Medieval
268390	CRUG MAWR NORTHWEST RIDGE, MARKER STONE	SO2603723153	MARKER STONE	Post Medieval
268391	CRUG MAWR NORTHWEST RIDGE, NON ANTIQUITY	SO2603923164	NON ANTIQUITY	Modern
268392	NANT Y FFIN, SHEEP FOLD I	SO2505023640	SHEEP FOLD	Post Medieval
268393	NANT Y GWARTHEG, SHEEP FOLD	SO2496524346	SHEEP FOLD	Post Medieval
268394	CWM NANT-Y-FEDW, BANK (EARTHWORK) I	SO2031526746	BANK (EARTHWORK)	Unknown
268395	CWM NANT-Y-FEDW, BANK (EARTHWORK) II	SO1977226723	BANK (EARTHWORK)	Post Medieval
268396	CWM CHARLES, SHELTER II	SO2015425234	SHELTER	Post Medieval
268397	CWM CHARLES, SHELTER III	SO2014225234	SHELTER	Post Medieval
268398	CWM CHARLES, SHELTER IV	SO2011125250	SHELTER	Post Medieval
268399	CWM CHARLES, SHELTER V	SO2011925252	SHELTER	Post Medieval
268400	WEST SLOPE OF PEN TWYN GLAS, SHELTER I	SO2012525254	SHELTER	Post Medieval
268401	CWM NANT-Y-FEDW, SHEEP FOLD I	SO1976026751	SHEEP FOLD	Post Medieval
268402	CWM NANT-Y-FEDW, REVETMENT	SO1978626754	REVETMENT	Post Medieval
268403	CWM NANT-Y-FEDW, TRACKWAY I	SO1974326572	TRACKWAY	Unknown
268404	CWM NANT-Y-FEDW, TRACKWAY II	SO1957126259	TRACKWAY	Unknown
268405	CWM NANT-Y-FEDW, BOUNDARY	SO2003426251	BOUNDARY	Unknown



268406	BLAEN NANT MAIR, HOUSE III	SO2758421991	HOUSE	Post Medieval
268407	CRUG MAWR SOUTHEAST RIDGE, STONE PILE	SO2633022134	STONE PILE	Unknown
268408	PARTRISHOW HILL, CAIRN	SO2663521845	CAIRN	Prehistoric
268409	PARTRISHOW HILL, BANK (EARTHWORK) I	SO2729721691	BANK (EARTHWORK)	Unknown
268410	PARTRISHOW HILL, BANK (EARTHWORK) II	SO2733621695	BANK (EARTHWORK)	Unknown
268411	PARTRISHOW HILL, HOUSE	SO2737621682	HOUSE	Unknown
268412	PARTRISHOW HILL, BANK (EARTHWORK) III	SO2743021669	BANK (EARTHWORK)	Unknown
268413	PARTRISHOW HILL, BANK (EARTHWORK) IV	SO2737221688	BANK (EARTHWORK)	Unknown
268414	PARTRISHOW HILL, BOUNDARY BANK I	SO2741321725	BOUNDARY BANK	Unknown
268415	PARTRISHOW HILL, BOUNDARY BANK II	SO2741021754	BOUNDARY BANK	Unknown
268416	PARTRISHOW HILL, BOUNDARY BANK III	SO2717121582	BOUNDARY BANK	Unknown
268417	PARTRISHOW HILL, BOUNDARY BANK IV	SO2714921579	BOUNDARY BANK	Unknown
268418	PARTRISHOW HILL, QUARRY I	SO2696321476	QUARRY	Post Medieval
268419	PARTRISHOW HILL, QUARRY II	SO2686721468	QUARRY	Post Medieval
268420	PARTRISHOW HILL, QUARRY III	SO2678621442	QUARRY	Post Medieval
268421	PARTRISHOW HILL, HUT	SO2668821502	HUT	Post Medieval
268422	PARTRISHOW HILL, STONE PILE	SO2670321506	STONE PILE	Unknown
268423	CRUG MAWR, STONE PILE	SO2620622642	STONE PILE	Modern
268424	CWM MILAID, HUT I	SO2524222607	HUT	Post Medieval
268425	CWM MILAID, HUT II	SO2528022538	HUT	Post Medieval
268426	CWM MILAID, TRACKWAY I	SO2527022550	TRACKWAY	Post Medieval
268427	CWM MILAID SOUTH, QUARRY I	SO2488921555	QUARRY	Post Medieval
268428	CWM MILAID SOUTH, BANK (EARTHWORK)	SO2465521527	BANK (EARTHWORK)	Post Medieval
268429	DRAEN, HUT	SO2425821327	HUT	Post Medieval
268430	DRAEN, QUARRY I	SO2425021249	QUARRY	Post Medieval
268431	BLAEN NANT MAIR, BOUNDARY WALL I	SO2689422162	BOUNDARY WALL	Post Medieval
268432	BLAEN NANT MAIR, BOUNDARY WALL II	SO2672322304	BOUNDARY WALL	Unknown
268433	GARGWY FAWR, SHEEP FOLD	SO2278925964	SHEEP FOLD	Post Medieval
268434	BLAEN NANT MAIR, QUARRY II	SO2736821945	QUARRY	Post Medieval
268435	BLAEN NANT MAIR, QUARRY III	SO2737121939	QUARRY	Post Medieval
268436	PARTRISHOW HILL, QUARRY IV	SO2744621902	QUARRY	Post Medieval



268437	BLAEN NANT MAIR, QUARRY IV	SO2750021945	QUARRY	Post Medieval
268438	GELLI BOETH, SHEEP FOLD I	SO2476323278	SHEEP FOLD	Post Medieval
268439	GELLI BOETH, HUT	SO2471223181	HUT	Post Medieval
268440	GELLI BOETH SOUTH, HUT	SO2447722753	HUT	Post Medieval
268441	GELLI BOETH SOUTH, QUARRY I	SO2467722564	QUARRY	Post Medieval
268442	GELLI BOETH SOUTH, QUARRY II	SO2468622569	QUARRY	Post Medieval
268443	GARGWY FAWR, REVETMENT	SO2281926104	REVETMENT	Post Medieval
268444	CWM NANT-Y-FEDW, HUT I	SO2060326035	HUT	Post Medieval
268445	CWM NANT-Y-FEDW, HUT II	SO2071026075	HUT	Post Medieval
268446	CWM NANT-YR-YCHEN, HUT	SO2073127441	HUT	Post Medieval
268447	CWM NANT-Y-FEDW, SHELTER	SO2118526047	SHELTER	Post Medieval
268448	PEN TWYN GLAS, MARKER STONE I	SO2130526061	MARKER STONE	Post Medieval
268449	PEN TWYN GLAS, SHELTER I	SO2123826013	SHELTER	Post Medieval
268450	PEN TWYN GLAS, SHELTER II	SO2122625944	SHELTER	Post Medieval
268451	CWM NANT-Y-FEDW, STONE PILE	SO2119626014	STONE PILE	Post Medieval
268452	PEN TWYN GLAS, MARKER STONE II	SO2133425691	MARKER STONE	Post Medieval
268453	PEN TWYN GLAS, HUT	SO2135425515	HUT	Unknown
268454	PEN TWYN GLAS, STONE PILE I	SO2151625640	STONE PILE	Post Medieval
268455	NEUADDFACH, SHEEP FOLD	SO1934525193	SHEEP FOLD	Post Medieval
268456	CWM BLAENFFINNANT, TRACKWAY	SO1917728329	TRACKWAY	Unknown
268457	CWM BLAENFFINNANT, QUARRY I	SO1919428190	QUARRY	Post Medieval
268458	NEUADDFACH, CLEARANCE CAIRN III	SO1939125362	CLEARANCE CAIRN	Unknown
268459	NEUADDFACH, CLEARANCE CAIRN IV	SO1941025320	CLEARANCE CAIRN	Unknown
268460	UPPER WEST SLOPE OF MYNYDD LLYSIAU, HUT CIRCLE	SO2045628075	HUT CIRCLE	Unknown
268461	WEST SLOPE OF PEN TWYN GLAS, QUARRY BUILDING	SO1967825272	QUARRY BUILDING	Post Medieval
268462	CWM CHARLES, SHELTER VI	SO2009225102	SHELTER	Post Medieval
268463	WEST SLOPE OF PEN TWYN GLAS, SHELTER II	SO2014225272	SHELTER	Post Medieval
268464	PEN TWYN GLAS, SHELTER III	SO2061725329	SHELTER	Post Medieval
268465	PEN TWYN GLAS, QUARRY I	SO2063725340	QUARRY	Post Medieval
268466	PEN TWYN GLAS, QUARRY II	SO2096825552	QUARRY	Unknown
268467	PEN TWYN GLAS, SHELTER IV	SO2086725565	SHELTER	Post Medieval



268468	PEN TWYN GLAS, STONE PILE II	SO2082225552	STONE PILE	Modern?
268469	PEN TWYN GLAS, WALL	SO2099925594	WALL	Post Medieval
268470	WEST SLOPE OF PEN TWYN GLAS, QUARRY I	SO2028025966	QUARRY	Post Medieval
268471	WEST SLOPE OF PEN TWYN GLAS, QUARRY II	SO2022526021	QUARRY	Post Medieval
268472	WEST SLOPE OF PEN TWYN GLAS, SHELTER III	SO2022326015	SHELTER	Post Medieval
268474	WEST SLOPE OF PEN TWYN GLAS, TRACKWAY I	SO1971825502	TRACKWAY	Unknown
268475	WEST SLOPE OF PEN TWYN GLAS, TRACKWAY II	SO1960225497	TRACKWAY	Post Medieval
268476	NEUADDFACH, QUARRY I	SO1925325631	QUARRY	Post Medieval
268477	CWM NANT-YR-YCHEN, BOUNDARY WALL	SO2013127149	BOUNDARY WALL	Post Medieval
268478	CWM NANT-YR-YCHEN, BOUNDARY	SO2042026802	BOUNDARY	Unknown
268479	CWM NANT-YR-YCHEN, BANK (EARTHWORK)	SO2039526768	BANK (EARTHWORK)	Post Medieval
268480	NEUADDFACH, BOUNDARY WALL	SO1912824820	BOUNDARY WALL	Post Medieval
268481	CWM-FFRWD, HUT	SO2001327919	HUT	Unknown
268482	NEUADDFACH, HOUSE PLATFORM V	SO1912724817	HOUSE PLATFORM	Post Medieval
268483	CWM-FFRWD, SHEEP FOLD I	SO2008227902	SHEEP FOLD	Bronze Age?
268484	CWM CHARLES, CLEARANCE CAIRN	SO1962425184	CLEARANCE CAIRN	Unknown
268485	LOWER WEST SLOPE OF MYNYDD LLYSIAU, SHELTER I	SO1962227502	SHELTER	Post Medieval
268486	LOWER WEST SLOPE OF MYNYDD LLYSIAU, SHELTER II	SO1960027437	SHELTER	Post Medieval
268487	LOWER WEST SLOPE OF MYNYDD LLYSIAU, SHELTER III	SO1962627417	SHELTER	Post Medieval
268488	CWM-FFRWD, BOUNDARY	SO1939027909	BOUNDARY	Post Medieval
268489	PEN ALLT-MAWR RIDGE, SHELTER I	SO2072324745	SHELTER	Unknown
268490	CWM BLAENFFINNANT, QUARRY BUILDING I	SO1969628223	QUARRY BUILDING	Post Medieval
268491	PEN ALLT-MAWR RIDGE, SHELTER II	SO2069924548	SHELTER	Post Medieval
268492	CWM BLAENFFINNANT, STONE PILE	SO1970228235	STONE PILE	Post Medieval
268493	PEN ALLT-MAWR RIDGE, CAIRN III	SO2074624425	CAIRN	Unknown
268494	UPPER WEST SLOPE OF MYNYDD LLYSIAU, QUARRY BUILDING	SO1968128191	QUARRY BUILDING	Post Medieval
268495	PEN ALLT-MAWR, SHELTER I	SO2069524340	SHELTER	Post Medieval
268496	PEN ALLT-MAWR, SHELTER II	SO2068624341	SHELTER	Post Medieval
268497	UPPER WEST SLOPE OF MYNYDD LLYSIAU, QUARRY I	SO1953928190	QUARRY	Post Medieval
268498	UPPER WEST SLOPE OF MYNYDD LLYSIAU, STONE PILE II	SO1953528187	STONE PILE	Post Medieval
268499	PEN ALLT-MAWR, SHELTER III	SO2069524319	SHELTER	Post Medieval



268500	UPPER WEST SLOPE OF MYNYDD LLYSIAU, STONE PILE III	SO1950328194	STONE PILE	Post Medieval
268501	UPPER WEST SLOPE OF MYNYDD LLYSIAU, STONE PILE IV	SO1948128196	STONE PILE	Post Medieval
268502	CWM BLAENFFINNANT, QUARRY BUILDING II	SO1940028217	QUARRY BUILDING	Post Medieval
268503	CWM BLAENFFINNANT, QUARRY BUILDING III	SO1939228200	QUARRY BUILDING	Post Medieval
268504	CWM CHARLES, WALL	SO2035924418	WALL	Unknown
268505	CWM-FFRWD, TRACKWAY	SO2017127836	TRACKWAY	Post Medieval
268506	PEN ALLT-MAWR RIDGE, SHOOTING STAND	SO2067725077	SHOOTING STAND	Post Medieval
268507	UPPER WEST SLOPE OF MYNYDD LLYSIAU, SHOOTING STAND I	SO2029527689	SHOOTING STAND	Post Medieval
268508	PEN TWYN GLAS, SHELTER V	SO2067325258	SHELTER	Unknown
268509	UPPER WEST SLOPE OF MYNYDD LLYSIAU, SHOOTING STAND II	SO2018228092	SHOOTING STAND	Unknown
268510	CWM NANTYGARREG, SHOOTING STAND V	SO2029723756	SHOOTING STAND	Post Medieval
268511	FOXHALL, MILITARY TRAINING SITE V	SO2123720935	MILITARY TRAINING SITE	Modern?
268512	CWM BANW, MARKER STONE I	SO2169024716	MARKER STONE	Post Medieval
268513	CWM BANW, SHEEP FOLD I	SO2195023991	SHEEP FOLD	Post Medieval
268514	CWM BANW, HUT I	SO2178824243	HUT	Post Medieval
268515	CWM BANW, STRUCTURE	SO2178824258	STRUCTURE	Post Medieval
268516	CWM BANW, HUT II	SO2126025008	HUT	Post Medieval
268517	EAST SLOPE OF PEN GLOCH-Y-PIBWR, SHOOTING STAND II	SO2104923671	SHOOTING STAND	Post Medieval
268518	CWM BANW, CAIRN	SO2162923954	CAIRN	Multiperiod
268519	CWM BANW, BANKED ENCLOSURE I	SO2166723815	BANKED ENCLOSURE	Unknown
268520	EAST SLOPE OF PEN GLOCH-Y-PIBWR, BANK (EARTHWORK) II	SO2167923649	BANK (EARTHWORK)	Unknown
268521	CWM BANW, HUT III	SO2253624026	HUT	Post Medieval
268522	DARREN FACH, QUARRY BUILDING	SO2251824094	QUARRY BUILDING	Post Medieval
268523	DARREN FACH, QUARRY II	SO2251124175	QUARRY	Post Medieval
268524	DARREN FACH, SHELTER II	SO2248724225	SHELTER	Post Medieval
268525	TAL TRWYNAU, MARKER STONE	SO2187224962	MARKER STONE	Post Medieval
268526	CWM BANW, MARKER STONE II	SO2178724838	MARKER STONE	Post Medieval
268527	CWM BEUSYCH, HUT PLATFORM I	SO2623021518	HUT PLATFORM	Unknown
268528	CWM BEUSYCH, HUT PLATFORM II	SO2618421596	HUT PLATFORM	Unknown
268529	CWM BEUSYCH, POND I	SO2614621706	POND	Unknown
268530	CWM BEUSYCH, SHEEP CRAWL	SO2602421862	SHEEP CRAWL	Unknown



268531	CWM BEUSYCH, BANK (EARTHWORK)	SO2602621845	BANK (EARTHWORK)	Unknown
268532	CWM BEUSYCH, POND II	SO2614421422	POND	Unknown
268533	CWM BEUSYCH, HUT PLATFORM III	SO2615621308	HUT PLATFORM	Unknown
268534	CWM BEUSYCH, HUT PLATFORM IV	SO2616321303	HUT PLATFORM	Unknown
268535	CWM BANW, HUT IV	SO2180024229	HUT	Post Medieval?
268536	CWM BANW, MARKER STONE III	SO2151024589	MARKER STONE	Post Medieval
268537	CWM BANW, BANKED ENCLOSURE II	SO2102224522	BANKED ENCLOSURE	Unknown
268538	CWM BANW, SHELTER IV	SO2253023992	SHELTER	Post Medieval
268539	DARREN FACH, SHELTER III	SO2252624086	SHELTER	Post Medieval
268540	CWM BANW, SHELTER V	SO2210724502	SHELTER	Post Medieval?
268541	TAL TRWYNAU, POND	SO2151025415	POND	Post Medieval
268542	PEN TWYN GLAS, POND	SO2138025487	POND	Post Medieval
268543	TAL TRWYNAU, QUARRY I	SO2146325235	QUARRY	Post Medieval
268544	CWM NANT-Y-FEDW, HUT CIRCLE	SO2082226474	HUT CIRCLE	Prehistoric
268545	CWM BANW, QUARRY II	SO2273223609	QUARRY	Post Medieval
268546	CWM BANW, QUARRY III	SO2275123604	QUARRY	Post Medieval
268547	CWM BANW, QUARRY IV	SO2270123622	QUARRY	Post Medieval
268548	EAST SLOPE OF PEN GLOCH-Y-PIBWR, HUT II	SO2171523435	HUT	Post Medieval
268549	DARREN FACH, QUARRY III	SO2287423787	QUARRY	Post Medieval
268550	DARREN FACH, QUARRY IV	SO2288123763	QUARRY	Post Medieval
268551	DARREN FACH, QUARRY V	SO2289323740	QUARRY	Post Medieval
268552	DARREN FACH, QUARRY VI	SO2290823677	QUARRY	Post Medieval
268553	DARREN FACH, QUARRY VII	SO2293323630	QUARRY	Post Medieval
268554	CWM BANW, QUARRY V	SO2284823614	QUARRY	Post Medieval
268555	CWM MAWR SOUTH, SHOOTING STAND VI	SO2126121588	SHOOTING STAND	Post Medieval
268556	CWM MAWR NORTH, SHOOTING STAND IV	SO2027023086	SHOOTING STAND	Post Medieval
268557	CWM MAWR NORTH, SHOOTING STAND V	SO2092022736	SHOOTING STAND	Post Medieval
268558	PEN CERRIG-CALCH, QUARRY VI	SO2126321282	QUARRY	Unknown
268559	SOUTHWEST PEN GLOCH-Y-PIBWR, QUARRY III	SO1989622877	QUARRY	Post Medieval
268560	SOUTHWEST PEN GLOCH-Y-PIBWR, QUARRY IV	SO1981222834	QUARRY	Post Medieval
268561	SOUTHWEST PEN GLOCH-Y-PIBWR, QUARRY V	SO1978422861	QUARRY	Post Medieval



268562	SOUTHWEST PEN GLOCH-Y-PIBWR, QUARRY VI	SO1993623062	QUARRY	Post Medieval
268563	PEN GLOCH-Y-PIBWR, SHELTER VII	SO2016923197	SHELTER	Modern?
268564	CWM MAWR SOUTH, MILITARY TRAINING SITE II	SO2126621648	MILITARY TRAINING SITE	Modern?
268565	CWM MAWR SOUTH, MILITARY STRUCTURE VII	SO2110321841	MILITARY STRUCTURE	Modern?
268566	CWM MAWR SOUTH, SHOOTING STAND VII	SO2111321841	SHOOTING STAND	Post Medieval
268567	CWM MAWR SOUTH, SHOOTING STAND VIII	SO2109121619	SHOOTING STAND	Post Medieval
268568	CWM MAWR SOUTH, SHOOTING STAND IX	SO2104021434	SHOOTING STAND	Post Medieval
268569	CWM NANTYGARREG, HUT II	SO2003824265	HUT	Unknown
268570	CWM MAWR SOUTH, QUARRY II	SO2037221125	QUARRY	Post Medieval
268571	CWM MAWR NORTH, SHOOTING STAND VI	SO2076422599	SHOOTING STAND	Post Medieval
268572	CWM MAWR SOUTH, SHOOTING STAND X	SO2099621340	SHOOTING STAND	Post Medieval
268573	CWM MAWR SOUTH, MILITARY STRUCTURE VIII	SO2111621464	MILITARY STRUCTURE	Modern?
268574	CWM MAWR SOUTH, SHOOTING STAND XI	SO2112621543	SHOOTING STAND	Post Medieval
268575	CWM MAWR SOUTH, MILITARY STRUCTURE IX	SO2112921938	MILITARY STRUCTURE	Modern?
268576	CWM MAWR SOUTH, SHOOTING STAND XII	SO2126921825	SHOOTING STAND	Post Medieval
268577	FOXHALL, MILITARY TRAINING SITE VI	SO2108021122	MILITARY TRAINING SITE	Modern?
268578	FOXHALL, MILITARY TRAINING SITE VII	SO2112621151	MILITARY TRAINING SITE	Modern?
268579	FOXHALL, MILITARY TRAINING SITE VIII	SO2118621120	MILITARY TRAINING SITE	Modern?
268580	CWM MAWR SOUTH, SHOOTING STAND XIII	SO2077522307	SHOOTING STAND	Post Medieval
268581	CWM MAWR NORTH, SHOOTING STAND VII	SO2072722514	SHOOTING STAND	Post Medieval
268582	CWM MAWR NORTH, SHOOTING STAND VIII	SO2058622789	SHOOTING STAND	Post Medieval
268583	CWM MAWR NORTH, SHOOTING STAND IX	SO2067522605	SHOOTING STAND	Post Medieval
268584	NORTH CWM CUMBETH, SHOOTING STAND III	SO2179121288	SHOOTING STAND	Post Medieval
268585	NORTH CWM CUMBETH, WALL II	SO2163521005	WALL	Post Medieval
268586	NORTH CWM CUMBETH, SHOOTING STAND IV	SO2168121010	SHOOTING STAND	Post Medieval
268587	NORTH CWM CUMBETH, SHOOTING STAND V	SO2171821026	SHOOTING STAND	Post Medieval
268588	NORTH CWM CUMBETH, SHOOTING STAND VI	SO2168621035	SHOOTING STAND	Post Medieval
268589	NORTH CWM CUMBETH, MILITARY STRUCTURE III	SO2168421031	MILITARY STRUCTURE	Modern?
268590	NORTHEAST SLOPE OF PEN CERRIG-CALCH, SHOOTING STAND III	SO2170822943	SHOOTING STAND	Modern?
268591	NORTHEAST SLOPE OF PEN CERRIG-CALCH, SHOOTING STAND IV	SO2253922581	SHOOTING STAND	Modern?
268592	CWM MAWR SOUTH, SHOOTING STAND XIV	SO2094921606	SHOOTING STAND	Post Medieval



268593	CWM NANTYGARREG, SHOOTING STAND VI	SO2007824007	SHOOTING STAND	Post Medieval
268594	CWM NANTYGARREG, SHOOTING STAND VII	SO2000824023	SHOOTING STAND	Post Medieval
268595	CWM MAWR SOUTH, SHOOTING STAND XV	SO2111822338	SHOOTING STAND	Post Medieval
268596	PEN GLOCH-Y-PIBWR, SHOOTING STAND V	SO2028223194	SHOOTING STAND	Post Medieval
268597	CWM MAWR NORTH, SHOOTING STAND X	SO2092422562	SHOOTING STAND	Post Medieval
268598	CWM MAWR NORTH, SHOOTING STAND XI	SO2092422572	SHOOTING STAND	Post Medieval
268599	CWM MAWR NORTH, SHOOTING STAND XII	SO2074122952	SHOOTING STAND	Post Medieval
268600	CWM MAWR SOUTH, SHOOTING STAND XVI	SO2120821494	SHOOTING STAND	Post Medieval
268601	PEN CERRIG-CALCH, SHOOTING STAND VI	SO2110921255	SHOOTING STAND	Post Medieval
268602	PEN CERRIG-CALCH, SHOOTING STAND VII	SO2114621282	SHOOTING STAND	Post Medieval
268603	CWM MAWR SOUTH, SHOOTING STAND XVII	SO2109521689	SHOOTING STAND	Post Medieval
268604	CWM MAWR SOUTH, SHOOTING STAND XVIII	SO2102121526	SHOOTING STAND	Post Medieval
268605	CWM MAWR SOUTH, SHOOTING STAND XIX	SO2101721560	SHOOTING STAND	Post Medieval
268606	PEN ALLT-MAWR, SHOOTING STAND II	SO2064424241	SHOOTING STAND	Post Medieval
268607	WEST BRYNIOG, HUT PLATFORM	SO1921022425	HUT PLATFORM	Unknown
268608	CWM MAWR SOUTH, BUILDING PLATFORM	SO2045121786	BUILDING PLATFORM	Unknown
268609	CWM MAWR NORTH, HUT PLATFORM	SO2032022513	HUT PLATFORM	Post Medieval?
268610	FOXHALL, BUILDING PLATFORM	SO2072321041	BUILDING PLATFORM	Unknown
268611	NORTH CWM CUMBETH, BUILDING PLATFORM I	SO2163920795	BUILDING PLATFORM	Unknown
268612	NORTH CWM CUMBETH, BUILDING PLATFORM II	SO2167420792	BUILDING PLATFORM	Unknown
268613	NORTH CWM CUMBETH, BUILDING PLATFORM III	SO2162020796	BUILDING PLATFORM	Post Medieval
268614	CWM CHARLES, BUILDING PLATFORM I	SO1992924644	BUILDING PLATFORM	Post Medieval
268615	CWM CHARLES, BUILDING PLATFORM II	SO1995624691	BUILDING PLATFORM	Unknown
268616	TABLE MOUNTAIN, HOUSE PLATFORM I	SO2255120628	HOUSE PLATFORM	Iron Age
268617	TABLE MOUNTAIN, HOUSE PLATFORM II	SO2252420725	HOUSE PLATFORM	Iron Age
268618	TABLE MOUNTAIN, HOUSE PLATFORM III	SO2254020649	HOUSE PLATFORM	Iron Age
268619	CWM BEUSYCH, HOUSE PLATFORM I	SO2624821463	HOUSE PLATFORM	Unknown
268620	CWM BEUSYCH, HOUSE PLATFORM II	SO2612321703	HOUSE PLATFORM	Unknown
268621	CWM MAWR SOUTH, SHEEP FOLD I	SO2093221831	SHEEP FOLD	Post Medieval
268622	NORTH CWM CUMBETH, SHEEP FOLD I	SO2232621402	SHEEP FOLD	Post Medieval
268623	NORTH CWM CUMBETH, SHEEP FOLD II	SO2154121387	SHEEP FOLD	Post Medieval



268624	NORTH CWM CUMBETH, SHEEP FOLD III	SO2160021417	SHEEP FOLD	Post Medieval
268625	CWM MAWR SOUTH, SHEEP FOLD II	SO2099521621	SHEEP FOLD	Unknown
268626	NORTH CWM CUMBETH, SHEEP FOLD IV	SO2181220905	SHEEP FOLD	Post Medieval
268627	LOWER FFALD FAWR, SHEEP FOLD	SO2192927108	SHEEP FOLD	Post Medieval
268628	FFALD UCHAF, SHEEP FOLD I	SO2071328979	SHEEP FOLD	Post Medieval?
268629	FFALD UCHAF, SHEEP FOLD II	SO2077728001	SHEEP FOLD	Post Medieval?
268630	EAST SLOPE OF PEN GLOCH-Y-PIBWR, SHEEP FOLD II	SO2136723386	SHEEP FOLD	Post Medieval
268631	CWM NANT-Y-FEDW, SHEEP FOLD II	SO2010426567	SHEEP FOLD	Post Medieval
268632	CWM NANT-Y-FEDW, SHEEP FOLD III	SO1977726773	SHEEP FOLD	Post Medieval
268633	CWM BEUSYCH, SHEEP FOLD	SO2560721956	SHEEP FOLD	Post Medieval
268634	CWM NANT-YR-YCHEN, SHEEP FOLD	SO2073926928	SHEEP FOLD	Post Medieval
268635	TAL TRWYNAU, SHEEP FOLD	SO2165125036	SHEEP FOLD	Post Medieval
268636	FOXHALL, TRACKWAY I	SO2131321186	TRACKWAY	Post Medieval
268637	PEN CERRIG-CALCH, TRACKWAY I	SO2136621254	TRACKWAY	Post Medieval
268638	FOXHALL, TRACKWAY II	SO2110721191	TRACKWAY	Post Medieval
268639	CWM MAWR SOUTH, TRACKWAY I	SO2068621725	TRACKWAY	Post Medieval
268640	CWM MAWR NORTH, TRACKWAY I	SO2015521807	TRACKWAY	Post Medieval?
268641	WEST BRYNIOG, TRACKWAY I	SO1998821669	TRACKWAY	Post Medieval
268642	CWM MAWR NORTH, TRACKWAY II	SO2037321964	TRACKWAY	Post Medieval
268643	WEST BRYNIOG, TRACKWAY II	SO1939022044	TRACKWAY	Unknown
268644	CWM MAWR NORTH, TRACKWAY III	SO2033822337	TRACKWAY	Unknown
268645	CWM MAWR NORTH, TRACKWAY IV	SO2026721984	TRACKWAY	Unknown
268646	WEST BRYNIOG, TRACKWAY III	SO1970621946	TRACKWAY	Post Medieval
268647	CWM MAWR SOUTH, TRACKWAY II	SO2043521203	TRACKWAY	Post Medieval
268648	CWM MAWR SOUTH, TRACKWAY III	SO2041221173	TRACKWAY	Post Medieval
268649	FOXHALL, TRACKWAY III	SO2092320914	TRACKWAY	Unknown
268650	FOXHALL, TRACKWAY IV	SO2046821090	TRACKWAY	Post Medieval
268651	CWM MAWR SOUTH, TRACKWAY IV	SO2046221144	TRACKWAY	Post Medieval
268652	FOXHALL, TRACKWAY V	SO2141421001	TRACKWAY	Post Medieval
268653	FOXHALL, TRACKWAY VI	SO2138620976	TRACKWAY	Post Medieval
268654	NORTH CWM CUMBETH, TRACKWAY	SO2168720750	TRACKWAY	Unknown



268655	FOXHALL, TRACKWAY VII	SO2142320677	TRACKWAY	Post Medieval
268656	WEST BRYNIOG, TRACKWAY IV	SO1940822249	TRACKWAY	Unknown
268657	WEST BRYNIOG, TRACKWAY V	SO1926722511	TRACKWAY	Unknown
268658	CWM NANTYGARREG, TRACKWAY III	SO2000324114	TRACKWAY	Unknown
268659	EAST SLOPE OF TAL TRWYNAU, TRACKWAY I	SO2265624665	TRACKWAY	Unknown
268660	DARREN FACH, TRACKWAY I	SO2266324636	TRACKWAY	Unknown
268661	LOWER FFALD FAWR, TRACKWAY I	SO2191826618	TRACKWAY	Post Medieval
268662	DARREN FACH, TRACKWAY II	SO2269524561	TRACKWAY	Post Medieval
268663	EAST SLOPE OF PEN CERRIG-CALCH, TRACKWAY I	SO2243421500	TRACKWAY	Unknown
268664	EAST SLOPE OF TAL TRWYNAU, TRACKWAY II	SO2267224694	TRACKWAY	Unknown
268665	PEN Y GADAI R FAWR RIDGE, TRACKWAY I	SO2393227610	TRACKWAY	Unknown
268666	PEN Y GADAI R FAWR RIDGE, TRACKWAY II	SO2392327726	TRACKWAY	Modern?
268667	GADAI R FAWR, TRACKWAY	SO2245927681	TRACKWAY	Post Medieval
268668	DARREN FACH, TRACKWAY III	SO2288323680	TRACKWAY	Post Medieval
268669	DARREN FACH, TRACKWAY IV	SO2288823665	TRACKWAY	Post Medieval
268670	DARREN FACH, TRACKWAY V	SO2278223776	TRACKWAY	Post Medieval
268671	CWM BANW, TRACKWAY I	SO2271323813	TRACKWAY	Post Medieval
268672	CWM CHARLES, TRACKWAY	SO2003524622	TRACKWAY	Post Medieval
268673	EAST SLOPE OF PEN CERRIG-CALCH, TRACKWAY II	SO2318221748	TRACKWAY	Unknown
268674	EAST SLOPE OF PEN CERRIG-CALCH, TRACKWAY III	SO2278021205	TRACKWAY	Unknown
268675	EAST SLOPE OF PEN CERRIG-CALCH, TRACKWAY IV	SO2236321457	TRACKWAY	Post Medieval
268676	NORTHEAST SLOPE OF PEN CERRIG-CALCH, TRACKWAY	SO2306922730	TRACKWAY	Post Medieval
268677	EAST SLOPE OF PEN CERRIG-CALCH, TRACKWAY V	SO2326322189	TRACKWAY	Post Medieval
268678	CWM NANTYGARREG, TRACKWAY IV	SO1985223974	TRACKWAY	Post Medieval
268679	LLWENAU DRAW, TRACKWAY I	SO1904523074	TRACKWAY	Post Medieval
268680	LLWENAU DRAW, TRACKWAY II	SO1913223086	TRACKWAY	Post Medieval
268681	LLWENAU DRAW, TRACKWAY III	SO1925523227	TRACKWAY	Post Medieval
268682	WEST BRYNIOG, TRACKWAY VI	SO1897322725	TRACKWAY	Post Medieval
268683	LLWENAU DRAW, TRACKWAY IV	SO1902922988	TRACKWAY	Unknown
268684	LLWENAU DRAW, TRACKWAY V	SO1932123705	TRACKWAY	Post Medieval
268685	TABLE MOUNTAIN, TRACKWAY II	SO2235120675	TRACKWAY	Post Medieval



268686	PEN CERRIG-CALCH, TRACKWAY II	SO2111721366	TRACKWAY	Unknown
268687	CWM MAWR SOUTH, TRACKWAY V	SO2127221808	TRACKWAY	Unknown
268688	LLWYN-Y-BRAIN, TRACKWAY	SO2764523136	TRACKWAY	Post Medieval
268689	NANT Y COY, TRACKWAY	SO2357025248	TRACKWAY	Post Medieval
268690	PEN GWYLLT MEIRCH RIDGE, TRACKWAY	SO2578024448	TRACKWAY	Post Medieval
268691	NANT Y FFIN, TRACKWAY I	SO2525223567	TRACKWAY	Post Medieval
268692	CWM NANT-Y-FEDW, TRACKWAY III	SO2013326694	TRACKWAY	Post Medieval
268693	CWM NANT-Y-FEDW, TRACKWAY IV	SO1962926432	TRACKWAY	Unknown
268694	BLAEN NANT MAIR, TRACKWAY I	SO2741922014	TRACKWAY	Post Medieval
268695	DRAEN, TRACKWAY I	SO2422421269	TRACKWAY	Post Medieval
268696	DRAEN, TRACKWAY II	SO2427021512	TRACKWAY	Post Medieval
268697	DRAEN, TRACKWAY III	SO2427421583	TRACKWAY	Post Medieval
268698	DRAEN, TRACKWAY IV	SO2425121565	TRACKWAY	Post Medieval
268699	BLAEN NANT MAIR, TRACKWAY II	SO2694622171	TRACKWAY	Unknown
268700	GELLI BOETH SOUTH, TRACKWAY	SO2453322657	TRACKWAY	Unknown
268701	GARGWY FAWR, TRACKWAY I	SO2281925997	TRACKWAY	Post Medieval
268702	GARGWY FAWR, TRACKWAY II	SO2283025992	TRACKWAY	Post Medieval
268703	CWM BEUSYCH, TRACKWAY I	SO2553321825	TRACKWAY	Post Medieval
268704	CWM MILAID, TRACKWAY II	SO2587522397	TRACKWAY	Unknown
268705	LOWER WEST SLOPE OF MYNYDD LLYSIAU, TRACKWAY I	SO1998827188	TRACKWAY	Post Medieval
268706	LOWER WEST SLOPE OF MYNYDD LLYSIAU, TRACKWAY II	SO1975327108	TRACKWAY	Post Medieval
268707	NEUADDFACH, TRACKWAY I	SO1934625513	TRACKWAY	Post Medieval
268708	WEST SLOPE OF PEN TWYN GLAS, TRACKWAY III	SO2013325267	TRACKWAY	Post Medieval
268709	WEST SLOPE OF PEN TWYN GLAS, TRACKWAY IV	SO2011126084	TRACKWAY	Post Medieval
268710	WEST SLOPE OF PEN TWYN GLAS, TRACKWAY V	SO2008525794	TRACKWAY	Post Medieval
268711	LOWER WEST SLOPE OF MYNYDD LLYSIAU, TRACKWAY III	SO1947227006	TRACKWAY	Post Medieval
268712	CWM NANT-YR-YCHEN, TRACKWAY	SO2054326946	TRACKWAY	Post Medieval
268713	NEUADDFACH, TRACKWAY II	SO1919724939	TRACKWAY	Post Medieval
268714	NEUADDFACH, TRACKWAY III	SO1913224973	TRACKWAY	Post Medieval
268715	NEUADDFACH, TRACKWAY IV	SO1907925177	TRACKWAY	Post Medieval
268716	NEUADDFACH, TRACKWAY V	SO1912724785	TRACKWAY	Post Medieval



268717	CWM BANW, TRACKWAY II	SO2190623997	TRACKWAY	Post Medieval
268718	EAST SLOPE OF PEN GLOCH-Y-PIBWR, TRACKWAY	SO2176523556	TRACKWAY	Post Medieval
268719	CWM BEUSYCH, TRACKWAY II	SO2615721231	TRACKWAY	Unknown
268720	CWM BANW, TRACKWAY III	SO2260623607	TRACKWAY	Post Medieval
268721	CWM BANW, TRACKWAY IV	SO2246124162	TRACKWAY	Post Medieval
268722	WEST BRYNIOG, QUARRY IV	SO1986921696	QUARRY	Post Medieval
268723	PEN CERRIG-CALCH, QUARRY VII	SO2132421262	QUARRY	Post Medieval
268724	WEST BRYNIOG, QUARRY V	SO1987521867	QUARRY	Post Medieval
268725	CWM MAWR SOUTH, QUARRY III	SO2070821765	QUARRY	Post Medieval
268726	WEST BRYNIOG, QUARRY VI	SO1983721716	QUARRY	Post Medieval
268727	CWM MAWR SOUTH, QUARRY IV	SO2056121858	QUARRY	Post Medieval
268728	WEST BRYNIOG, QUARRY VII	SO1969422044	QUARRY	Post Medieval
268729	WEST BRYNIOG, QUARRY VIII	SO1966222069	QUARRY	Post Medieval
268730	WEST BRYNIOG, QUARRY IX	SO1938822098	QUARRY	Unknown
268731	WEST BRYNIOG, QUARRY X	SO1934822164	QUARRY	Unknown
268732	WEST BRYNIOG, QUARRY XI	SO1970421818	QUARRY	Unknown
268733	WEST BRYNIOG, QUARRY XII	SO1982121902	QUARRY	Post Medieval
268734	WEST BRYNIOG, QUARRY XIII	SO1983521912	QUARRY	Post Medieval
268735	WEST BRYNIOG, QUARRY XIV	SO1979521922	QUARRY	Post Medieval
268736	WEST BRYNIOG, QUARRY XV	SO1980321912	QUARRY	Post Medieval
268737	WEST BRYNIOG, QUARRY XVI	SO1974221961	QUARRY	Post Medieval
268738	LLWENAU DRAW, QUARRY III	SO1919722900	QUARRY	Post Medieval
268739	LLWENAU DRAW, QUARRY IV	SO1922522962	QUARRY	Post Medieval
268740	LLWENAU DRAW, QUARRY V	SO1922722991	QUARRY	Post Medieval
268741	LLWENAU DRAW, QUARRY VI	SO1919722919	QUARRY	Post Medieval
268742	CWM MAWR SOUTH, QUARRY V	SO2051821153	QUARRY	Post Medieval
268743	FOXHALL, QUARRY V	SO2051421113	QUARRY	Post Medieval
268744	FOXHALL, QUARRY VI	SO2052221134	QUARRY	Post Medieval
268745	CWM MAWR SOUTH, QUARRY VI	SO2052421475	QUARRY	Post Medieval
268746	CWM MAWR SOUTH, QUARRY VII	SO2059421602	QUARRY	Post Medieval
268747	CWM MAWR SOUTH, QUARRY VIII	SO2060921693	QUARRY	Post Medieval



268748	CWM MAWR SOUTH, QUARRY IX	SO2061721698	QUARRY	Post Medieval
268749	CWM MAWR SOUTH, QUARRY X	SO2050321468	QUARRY	Unknown
268750	CWM MAWR SOUTH, QUARRY XI	SO2049221148	QUARRY	Post Medieval
268751	FOXHALL, QUARRY VII	SO2140620935	QUARRY	Post Medieval
268752	FOXHALL, QUARRY VIII	SO2135820963	QUARRY	Post Medieval
268753	NORTH CWM CUMBETH, QUARRY II	SO2222420986	QUARRY	Post Medieval
268754	WEST BRYNIOG, QUARRY XVII	SO1971921808	QUARRY	Unknown
268755	WEST BRYNIOG, QUARRY XVIII	SO1953021999	QUARRY	Unknown
268756	CWM MAWR NORTH, QUARRY I	SO2000621846	QUARRY	Post Medieval
268757	FOXHALL, QUARRY IX	SO2101720974	QUARRY	Unknown
268758	NORTH CWM CUMBETH, QUARRY III	SO2214921051	QUARRY	Post Medieval
268759	DARREN FACH, QUARRY VIII	SO2265724488	QUARRY	Post Medieval
268760	DARREN FACH, QUARRY IX	SO2255924531	QUARRY	Post Medieval
268761	EAST SLOPE OF PEN CERRIG-CALCH, QUARRY V	SO2331422449	QUARRY	Post Medieval
268762	EAST SLOPE OF PEN CERRIG-CALCH, QUARRY VI	SO2330122204	QUARRY	Post Medieval
268763	EAST SLOPE OF PEN CERRIG-CALCH, QUARRY VII	SO2312522240	QUARRY	Post Medieval
268764	NORTHEAST SLOPE OF PEN CERRIG-CALCH, QUARRY III	SO2249822914	QUARRY	Post Medieval
268765	DARREN FACH, QUARRY X	SO2263324481	QUARRY	Post Medieval
268766	DARREN FACH, QUARRY XI	SO2252024550	QUARRY	Post Medieval
268767	MYNYDD LLYSIAU, QUARRY I	SO2051828242	QUARRY	Unknown
268768	MYNYDD LLYSIAU, QUARRY II	SO2065028052	QUARRY	Post Medieval
268769	MYNYDD LLYSIAU, QUARRY III	SO2122327239	QUARRY	Post Medieval
268770	PEN Y GADAIR FAWR, QUARRY I	SO2294628769	QUARRY	Prehistoric
268771	GADAIR FAWR, QUARRY	SO2256027762	QUARRY	Unknown
268772	CWM BANW, QUARRY VI	SO2278823706	QUARRY	Post Medieval
268773	CWM CHARLES, QUARRY I	SO2024624554	QUARRY	Post Medieval
268774	EAST SLOPE OF PEN CERRIG-CALCH, QUARRY VIII	SO2269321065	QUARRY	Unknown
268775	EAST SLOPE OF PEN CERRIG-CALCH, QUARRY IX	SO2269221086	QUARRY	Post Medieval
268776	NORTHEAST SLOPE OF PEN CERRIG-CALCH, QUARRY IV	SO2250822929	QUARRY	Post Medieval
268777	NORTHEAST SLOPE OF PEN CERRIG-CALCH, QUARRY V	SO2261422884	QUARRY	Unknown
268778	NORTHEAST SLOPE OF PEN CERRIG-CALCH, QUARRY VI	SO2282022782	QUARRY	Unknown



268779	PEN Y GADAI FAWR, QUARRY II	SO2293328717	QUARRY	Unknown
268780	FFALD UCHAF, QUARRY	SO2172527546	QUARRY	Unknown
268781	CWM BANW, QUARRY VII	SO2285523627	QUARRY	Post Medieval
268782	CWM BANW, QUARRY VIII	SO2286323638	QUARRY	Post Medieval
268783	DARREN FACH, QUARRY XII	SO2289023643	QUARRY	Post Medieval
268784	EAST SLOPE OF PEN CERRIG-CALCH, QUARRY X	SO2270021022	QUARRY	Post Medieval
268785	EAST SLOPE OF PEN CERRIG-CALCH, QUARRY XI	SO2272320976	QUARRY	Post Medieval
268786	EAST SLOPE OF PEN CERRIG-CALCH, QUARRY XII	SO2273820956	QUARRY	Post Medieval
268787	NORTHEAST SLOPE OF PEN CERRIG-CALCH, QUARRY VII	SO2316522614	QUARRY	Post Medieval
268788	EAST SLOPE OF PEN CERRIG-CALCH, QUARRY XIII	SO2329622071	QUARRY	Post Medieval
268789	LLWENAU DRAW, QUARRY VII	SO1983923163	QUARRY	Post Medieval
268790	LLWENAU DRAW, QUARRY VIII	SO1985423191	QUARRY	Post Medieval
268791	SOUTHWEST PEN GLOCH-Y-PIBWR, QUARRY VII	SO1992423058	QUARRY	Post Medieval
268792	WEST BRYNIOG, QUARRY XIX	SO1891422862	QUARRY	Post Medieval
268793	WEST BRYNIOG, QUARRY XX	SO1890822845	QUARRY	Post Medieval
268794	LLWENAU DRAW, QUARRY IX	SO1970423582	QUARRY	Post Medieval
268795	LLWENAU DRAW, QUARRY X	SO1952923641	QUARRY	Post Medieval
268796	LLWENAU DRAW, QUARRY XI	SO1952423654	QUARRY	Post Medieval
268797	LLWENAU DRAW, QUARRY XII	SO1932823748	QUARRY	Post Medieval
268798	LLWENAU DRAW, QUARRY XIII	SO1897022953	QUARRY	Post Medieval
268799	LLWENAU DRAW, QUARRY XIV	SO1966523510	QUARRY	Post Medieval
268800	WEST BRYNIOG, QUARRY XXI	SO1890722775	QUARRY	Post Medieval
268801	LLWENAU DRAW, QUARRY XV	SO1947023389	QUARRY	Post Medieval
268802	CWM NANTYGARREG, QUARRY	SO1954723673	QUARRY	Post Medieval
268803	LLWENAU DRAW, QUARRY XVI	SO1959123593	QUARRY	Post Medieval
268804	LLWENAU DRAW, QUARRY XVII	SO1956723299	QUARRY	Post Medieval
268805	LLWENAU DRAW, QUARRY XVIII	SO1956723380	QUARRY	Post Medieval
268806	LLWENAU DRAW, QUARRY XIX	SO1922522944	QUARRY	Post Medieval
268807	LLWENAU DRAW, QUARRY XX	SO1921922953	QUARRY	Post Medieval
268808	LLWENAU DRAW, QUARRY XXI	SO1919822921	QUARRY	Post Medieval
268809	WEST BRYNIOG, QUARRY XXII	SO1918222891	QUARRY	Post Medieval



268810	CWM MAWR NORTH, QUARRY I	SO1988622793	QUARRY	Post Medieval
268811	TABLE MOUNTAIN, QUARRY V	SO2251020358	QUARRY	Post Medieval
268812	PEN CERRIG-CALCH, QUARRY VIII	SO2110321321	QUARRY	Post Medieval
268813	PEN CERRIG-CALCH, QUARRY IX	SO2228821652	QUARRY	Post Medieval
268814	PEN CERRIG-CALCH, QUARRY X	SO2240521801	QUARRY	Post Medieval
268815	NANT Y YCHEN, QUARRY II	SO2367624810	QUARRY	Post Medieval
268816	NANT Y COY, QUARRY I	SO2360824802	QUARRY	Post Medieval
268817	NANT Y COY, QUARRY II	SO2362224808	QUARRY	Post Medieval
268818	NANT Y COY, QUARRY III	SO2392826426	QUARRY	Post Medieval
268819	NANT Y COY, QUARRY IV	SO2325125774	QUARRY	Post Medieval
268820	NANT Y YCHEN, QUARRY III	SO2432224367	QUARRY	Post Medieval
268821	CWM CHARLES, QUARRY II	SO2012925252	QUARRY	Post Medieval
268822	CWM NANT-Y-FEDW, QUARRY	SO1988826199	QUARRY	Post Medieval
268823	BLAEN NANT MAIR, QUARRY V	SO2736722017	QUARRY	Post Medieval
268824	BLAEN NANT MAIR, QUARRY VI	SO2733821959	QUARRY	Post Medieval
268825	BLAEN NANT MAIR, QUARRY VII	SO2742022017	QUARRY	Post Medieval
268826	BLAEN NANT MAIR, QUARRY VIII	SO2744122008	QUARRY	Post Medieval
268827	CWM MILAID SOUTH, QUARRY II	SO2493521559	QUARRY	Post Medieval
268828	CWM MILAID SOUTH, QUARRY III	SO2490021568	QUARRY	Post Medieval
268829	CWM MILAID SOUTH, QUARRY IV	SO2482321567	QUARRY	Post Medieval
268830	CWM MILAID SOUTH, QUARRY V	SO2478121547	QUARRY	Post Medieval
268831	DRAEN, QUARRY II	SO2443821672	QUARRY	Post Medieval
268832	CWM MILAID SOUTH, QUARRY VI	SO2446621671	QUARRY	Post Medieval
268833	LOWER BLAEN-YR-HENBANT, QUARRY I	SO2534421289	QUARRY	Post Medieval
268834	LOWER BLAEN-YR-HENBANT, QUARRY II	SO2532221283	QUARRY	Post Medieval
268835	LOWER BLAEN-YR-HENBANT, QUARRY III	SO2529221284	QUARRY	Post Medieval
268836	LOWER BLAEN-YR-HENBANT, QUARRY IV	SO2523821437	QUARRY	Post Medieval
268837	LOWER BLAEN-YR-HENBANT, QUARRY V	SO2519721494	QUARRY	Post Medieval
268838	LOWER WEST SLOPE OF MYNYDD LLYSIAU, QUARRY I	SO1946626974	QUARRY	Post Medieval
268839	LOWER WEST SLOPE OF MYNYDD LLYSIAU, QUARRY II	SO1944426973	QUARRY	Post Medieval
268840	CWM NANT-YR-YCHEN, QUARRY II	SO2021727162	QUARRY	Post Medieval



268841	CWM NANT-YR-YCHEN, QUARRY III	SO2107127201	QUARRY	Post Medieval
268842	PEN TWYN GLAS, QUARRY III	SO2124626005	QUARRY	Post Medieval
268843	PEN TWYN GLAS, QUARRY IV	SO2122725945	QUARRY	Post Medieval
268844	PEN TWYN GLAS, QUARRY V	SO2117425696	QUARRY	Post Medieval
268845	PEN TWYN GLAS, QUARRY VI	SO2132625589	QUARRY	Unknown
268846	PEN TWYN GLAS, QUARRY VII	SO2134125537	QUARRY	Unknown
268847	PEN TWYN GLAS, QUARRY VIII	SO2151525650	QUARRY	Post Medieval
268848	NEUADDFACH, QUARRY II	SO1935725218	QUARRY	Post Medieval
268849	WEST SLOPE OF PEN TWYN GLAS, QUARRY III	SO1972725256	QUARRY	Unknown
268850	UPPER WEST SLOPE OF MYNYDD LLYSIAU, QUARRY II	SO1940828178	QUARRY	Post Medieval
268851	CWM CHARLES, QUARRY III	SO1916124841	QUARRY	Post Medieval
268852	LOWER WEST SLOPE OF MYNYDD LLYSIAU, QUARRY III	SO1961027453	QUARRY	Post Medieval
268853	NEUADDFACH, QUARRY III	SO1916824962	QUARRY	Post Medieval
268854	CWM-FFRWD, QUARRY	SO1956927558	QUARRY	Post Medieval
268855	CWM BLAENFFINNANT, QUARRY II	SO1967328223	QUARRY	Post Medieval
268856	UPPER WEST SLOPE OF MYNYDD LLYSIAU, QUARRY III	SO1969428187	QUARRY	Post Medieval
268857	UPPER WEST SLOPE OF MYNYDD LLYSIAU, QUARRY IV	SO1950228196	QUARRY	Post Medieval
268858	NEUADDFACH, QUARRY IV	SO1914724802	QUARRY	Post Medieval
268859	CWM BLAENFFINNANT, QUARRY III	SO1939728209	QUARRY	Post Medieval
268860	CWM BLAENFFINNANT, QUARRY IV	SO1975228258	QUARRY	Post Medieval
268861	CWM BANW, QUARRY IX	SO2264823614	QUARRY	Post Medieval
268862	CWM BANW, QUARRY X	SO2269623618	QUARRY	Post Medieval
268863	CWM BANW, QUARRY XI	SO2271123618	QUARRY	Post Medieval
268864	CWM BANW, QUARRY XII	SO2272823607	QUARRY	Post Medieval
268865	CWM BANW, QUARRY XIII	SO2274823608	QUARRY	Post Medieval
268866	DARREN FACH, QUARRY XIII	SO2251424099	QUARRY	Post Medieval
268867	DARREN FACH, QUARRY XIV	SO2241824240	QUARRY	Post Medieval
268868	CWM BANW, QUARRY XIV	SO2227924210	QUARRY	Post Medieval
268869	DARREN FACH, QUARRY XV	SO2231224478	QUARRY	Post Medieval
268870	CWM BANW, QUARRY XV	SO2208724524	QUARRY	Post Medieval
268871	CWM BANW, QUARRY XVI	SO2210724525	QUARRY	Post Medieval



268872	TAL TRWYNAU, QUARRY II	SO2163425103	QUARRY	Post Medieval
268873	TAL TRWYNAU, QUARRY III	SO2170625042	QUARRY	Post Medieval
268874	CWM BANW, QUARRY XVII	SO2236224139	QUARRY	Post Medieval
268875	CWM BANW, QUARRY XVIII	SO2238824095	QUARRY	Post Medieval
268876	CWM BANW, QUARRY XIX	SO2243524058	QUARRY	Post Medieval
268877	CWM BANW, QUARRY XX	SO2271923669	QUARRY	Unknown
268878	CWM BANW, QUARRY XXI	SO2238224222	QUARRY	Post Medieval?
268879	CWM BANW, QUARRY XXII	SO2235324229	QUARRY	Post Medieval
268880	CWM BANW, QUARRY XXIII	SO2228424293	QUARRY	Post Medieval?
268881	DARREN FACH, QUARRY XVI	SO2231424413	QUARRY	Post Medieval
268882	CWM BANW, QUARRY XXIV	SO2210324568	QUARRY	Post Medieval?
268883	CWM MAWR NORTH, HUT III	SO2016621997	HUT	Unknown
268884	CWM MAWR NORTH, SHELTER	SO2048022733	SHELTER	Post Medieval
268885	CWM MAWR NORTH, HUT IV	SO2061322497	HUT	Post Medieval
268886	FOXHALL, QUARRY BUILDING II	SO2048221098	QUARRY BUILDING	Post Medieval
268887	NORTH CWM CUMBETH, QUARRY BUILDING	SO2187320992	QUARRY BUILDING	Post Medieval
268888	CWM MAWR SOUTH, HUT II	SO2093221828	HUT	Post Medieval
268889	NORTH CWM CUMBETH, HUT	SO2232621407	HUT	Post Medieval
268890	FFALD UCHAF, HUT I	SO2202027542	HUT	Post Medieval
268891	EAST SLOPE OF PEN CERRIG-CALCH, HUT II	SO2277822117	HUT	Bronze Age?
268892	FFALD UCHAF, HUT II	SO2170227860	HUT	Unknown
268893	FFALD UCHAF, HUT III	SO2148528017	HUT	Unknown
268894	FFALD UCHAF, HUT IV	SO2092328457	HUT	Post Medieval
268895	FFALD UCHAF, HUT V	SO2071028979	HUT	Post Medieval?
268896	FFALD UCHAF, HUT VI	SO2075128891	HUT	Post Medieval
268897	FFALD UCHAF, HUT VII	SO2070429023	HUT	Post Medieval
268898	NANT Y GADAIR, HUT III	SO2170927955	HUT	Unknown
268899	MYNYDD LLYSIAU, QUARRY BUILDING	SO2122527239	QUARRY BUILDING	Post Medieval
268900	GADAIR FAWR, HUT I	SO2231727711	HUT	Post Medieval
268901	GADAIR FAWR, HUT II	SO2234627712	HUT	Post Medieval
268902	EAST SLOPE OF PEN CERRIG-CALCH, HUT III	SO2276321801	HUT	Unknown



268903	PEN CERRIG-CALCH, SHEPHERDS HUT	SO2144122226	SHEPHERDS HUT	Post Medieval
268904	NANT Y COY, HUT IV	SO2352725218	HUT	Post Medieval
268905	DRAEN, BARN	SO2428521716	BARN	Post Medieval
268906	DRAEN, HOUSE	SO2428221688	HOUSE	Post Medieval
268907	CWM MILAID, HOUSE	SO2498622606	HOUSE	Post Medieval
268908	Pen Twyn Glas Cairn	SO2118526905	ROUND BARROW	Bronze Age
268909	Foxhall-twyn Settlement II	SO2135020650	FARMSTEAD	Post Medieval
268910	Upper Barn Sheepfold	SO2169220850	SHEEP FOLD	Post Medieval
268911	Darren enclosure	SO2087521335	ENCLOSURE	Post Medieval?
268912	Pen-y-lan Quarry (dis)	SO1993821728	QUARRY	Post Medieval
268913	Crug Hywel field boundary	SO2247520505	BANK (EARTHWORK)	Post Medieval?
268914	Crug Hywel sheepfold	SO2248520555	SHEEP FOLD	Post Medieval
268915	Crug Hywel enclosure	SO2225021450	ENCLOSURE	Prehistoric
268916	Table Mountain Quarry I (dis)	SO2271221168	QUARRY	Post Medieval
268917	Crug Hywel enclosure	SO2255520545	ENCLOSURE	Unknown
268918	Crug Hywel linear structure	SO2261520565	WALL	Prehistoric?
268919	Crug Hywel bank II	SO2258520495	BANK (EARTHWORK)	Post Medieval?
268920	Crug Hywel house site	SO2250520325	HOUSE	Medieval?
268921	Darren hut	SO2186521945	HUT	Prehistoric?
268922	Darren enclosure	SO2030522945	ENCLOSURE COMPLEX	Post Medieval?
268923	Darren hut settlement III	SO2142521415	HUT CIRCLE	Prehistoric
268924	Darren Cairn II	SO2123521495	SHELTER	Post Medieval
268925	Darren Ring cairn	SO2123521335	ROUND BARROW	Bronze Age
268926	Darren Enclosures	SO2135021350	FIELD SYSTEM	Bronze Age?
268927	Darren Hut II	SO2125021350	HUT	Bronze Age?
268928	Darren Enclosures	SO2125021250	ENCLOSURE	Prehistoric
268929	Black Mountains finds XXVII	SO2185022350	FINDSPOT	Neolithic
268930	Pen Cerig Calch Cairn II	SO2121522805	BOUNDARY CAIRN	Post Medieval
268931	Pen Gloch y Pibwr Find	SO2025023050	FINDSPOT	Roman?
268932	Pen Gloch y Pibwr Cairn I	SO2020123205	ROUND BARROW	Bronze Age
268934	Bryniog Hut Circles	SO1985022550	HUT CIRCLE SETTLEMENT	Bronze Age?



268935	Darren Shelter	SO2116521725	SHELTER	Modern?
268936	Darren enclosure	SO2112521855	ENCLOSURE COMPLEX	Post Medieval?
268937	Pen Cerig Calch chapel site	SO2230522635	CHAPEL	Medieval
268938	Cwm Banw house platform	SO2229523295	HOUSE PLATFORM	Medieval
268939	Cwm Banw, Grwyne Fechan, hut circle II	SO2160523455	HUT	Bronze Age?
268940	Cwm Banw cairn	SO2159523805	ROUND BARROW	Bronze Age
268941	Cwm Banw, Grwyne Fechan, kidney-shaped enclosure	SO2163523955	ENCLOSED SETTLEMENT	Bronze Age?
268942	Pen Alltmawr Cairn I	SO2064523870	ROUND BARROW	Bronze Age
268943	Lewenau Draw stone bank	SO1949523565	BANK (EARTHWORK)	Post Medieval?
268944	Lewenau Draw clearance cairn	SO1936523725	CLEARANCE CAIRN	Post Medieval?
268945	Lewenau Draw cairn	SO1986523505	ROUND BARROW	Bronze Age
268946	Darren Fach Quarry VIII (dis)	SO2284123861	QUARRY	Post Medieval
268947	Darren Fach Quarry VII (dis)	SO2263823868	QUARRY	Post Medieval
268948	Daren Fach House Site	SO2258523585	HOUSE	Post Medieval
268949	Darren Fach Quarry III (dis)	SO2244824289	QUARRY	Post Medieval
268950	Cwm Banw, Grwyne Fechan, shepherd's hut	SO2155524605	HUT	Post Medieval
268951	Pen Alltmawr Enclosures	SO2075024450	SHEEP FOLD	Post Medieval
268952	Pen Alltmawr Cairn III	SO2070524355	ROUND BARROW	Bronze Age
268953	Pen Alltmawr Cairn II	SO2069524335	ROUND BARROW	Bronze Age
268954	Black Mountains finds XI	SO2075024850	FINDSPOT	Neolithic
268955	Pentwynglas arrowhead	SO2065025050	FINDSPOT	Neolithic
268956	Black Mountains finds X	SO2095025550	FINDSPOT	Neolithic
268957	Pen Twyn Glas flint find	SO2135025850	FINDSPOT	Mesolithic?
268958	Pen Twyn Glas Mound	SO2133525695	BOUNDARY CAIRN	Post Medieval
268959	Mynydd Llysiiau flint find II	SO2115527235	FINDSPOT	Mesolithic
268960	Penmaen Hir flints	SO2236527715	FINDSPOT	Mesolithic
268961	Cwmrhos clearance cairn	SO1952525245	CLEARANCE CAIRN	Bronze Age
268962	Cwm Nant y Fedw, clearance cairns	SO1980526305	CAIRNFIELD	Bronze Age
268963	Mynydd Llysiiau Ditch	SO2069527965	PEAT CUTTING	Post Medieval
268964	Mynydd Llysiiau flint find I	SO2025028250	FINDSPOT	Neolithic
268965	Mynydd Llysiiau field system	SO2015028050	FIELD SYSTEM	Bronze Age



268966	Mynydd Llysiau flint find III	SO2045528555	FINDSPOT	Mesolithic?
268967	Gader Fawr Stone Circles	SO2250028500	HUT CIRCLE	Bronze Age?
268968	Mynydd Du flint find IX	SO2430025800	FINDSPOT	Prehistoric
268969	Pen Gwyllt Meirch House Site	SO2432524435	HOUSE	Post Medieval
268970	Pen Gwyllt Meirch Stones	SO2532824818	BOUNDARY STONE	Post Medieval
268971	Cwm Miliad mound II	SO2517522945	NON ANTIQUITY	Unknown
268972	Cwm Miliad mound I	SO2583522395	NON ANTIQUITY	Unknown
268973	Blaen yr Henbant, flints	SO2555022050	FINDSPOT	Prehistoric?
268974	Crug Mawr, flint find	SO2605522785	FINDSPOT	Prehistoric?
268976	Tal y Maes scraper	SO2315025950	FINDSPOT	Bronze Age?
268977	Cwm Ddaunant boundary Stones	SO2421626424	BOUNDARY STONE	Post Medieval
268978	Y Cwt platform III	SO2661521505	PLATFORM	Medieval?
268979	Y Cwt platform II	SO2666521515	PLATFORM	Medieval?
268980	Y Cwt, early medieval settlement	SO2667521475	SETTLEMENT	Medieval?
268981	Fynnon Fair Well	SO2663522460	HOLY WELL	Medieval?
268982	Disgwylfa, flint flake	SO2600523105	FINDSPOT	Prehistoric?
268983	Pen y Gader Fawr enclosures	SO2215528555	ENCLOSURE COMPLEX	Unknown
268984	Gader Fawr Enclosure	SO2225028550	ENCLOSURE	Unknown
268985	Pen y Gader Fawr bank	SO2225028550	BANK (EARTHWORK)	Post Medieval?
268986	Gader Fawr Find	SO2324028510	FINDSPOT	Neolithic
268987	Pen y Gader Fawr Find	SO2305028750	FINDSPOT	Neolithic?
268990	Pen y Gader Fawr Placename	SO2295028750	HILLFORT	Iron Age
268991	Cwmrhos Bronze Age occupation	SO1945025450	OCCUPATION SITE	Bronze Age
268992	Cwmrhos clearance cairns	SO1940525405	CAIRNFIELD	Bronze Age
268993	Cam Charles long hut II	SO1936525285	LONG HUT	Medieval?
268994	Cam Charles stone structure	SO1934525205	SHELTER	Post Medieval
268995	Cwmrhos longhouse	SO1935525215	LONG HUT	Medieval
268996	Pen Trumau Finds II	SO2055029050	FINDSPOT	Bronze Age?
268999	Fald y Nant Cairn I	SO2165528095	ROUND BARROW	Bronze Age
241000	Ffald y Nant House Site	SO2172527935	HOUSE	Post Medieval
241001	Ffald y Nant Cairn	SO2165027950	NON ANTIQUITY	Unknown



241002	Pen Gareg Find	SO2470525205	FINDSPOT	Bronze Age
241003	Nant yr Tchen Finds	SO2475025450	FINDSPOT	Neolithic?
241004	Disgwylfa Cairn III	SO2589524035	BOUNDARY CAIRN	Post Medieval
241005	Nant Y Gwartheg Stones	SO2583924217	QUARRY	Post Medieval
241006	Nant Y Ffin Stones	SO2601623809	BOUNDARY STONE	Post Medieval
241007	Tyr Ywen, field boundary I	SO2706522655	FIELD BOUNDARY	Post Medieval?
241008	Tyr Ywen, field boundary II	SO2712522675	FIELD BOUNDARY	Post Medieval?
241009	Llwyn y Brain, enclosure II	SO2742522975	ENCLOSURE	Post Medieval?
241010	Partrishow Hill Field System	SO2755022950	FIELD SYSTEM	Post Medieval
241011	Partrishow Hill House Site II	SO2755022950	HOUSE	Post Medieval
241012	Partrishow	SO2750022500	CHURCH	Modern
241013	Partrishow find	SO2750022500	FINDSPOT	Prehistoric
241014	Partrishow find	SO2750022500	FINDSPOT	Prehistoric?
241015	Llwyn y Brain platform I	SO2750523075	PLATFORM	Post Medieval?
241016	Llwyn y Brain platform II	SO2751523065	PLATFORM	Post Medieval?
241017	Llwyn y Brain, enclosure I	SO2755523145	ENCLOSURE	Prehistoric?
241018	Partrishow, cairn	SO2737521965	CAIRN	Prehistoric?
241019	Pen yr heol hir, enclosures	SO2740521655	ENCLOSURE COMPLEX	Post Medieval?
241020	Cwm Beusych platform V	SO2613521675	PLATFORM	Medieval?
241021	Cwm Beusych platform IV	SO2619521605	PLATFORM	Medieval?
241022	Cwm Beusych platform III	SO2620521575	PLATFORM	Medieval?
241023	Cwm Beusych, medieval settlement	SO2617521505	SETTLEMENT	Medieval?
241024	Lease trackway	SO2615521155	TRACKWAY	Post Medieval?
241025	Cwm Beusych, possible field boundary	SO2617521235	FIELD BOUNDARY	Medieval?
241026	Beuswch	SO2615021450	PLATFORM	Medieval
241027	NORTH CWM CUMBETH, SHOOTING STAND VII	SO2188620978	SHOOTING STAND	Post Medieval
241028	NORTH CWM CUMBETH, MILITARY STRUCTURE IV	SO2189121009	MILITARY STRUCTURE	Modern?
241029	PEN CERRIG-CALCH, STONE PILE VII	SO2122322080	STONE PILE	Unknown
241030	CWM BANW, SHEEP FOLD II	SO2122125031	SHEEP FOLD	Post Medieval
241031	PEN TWYN GLAS, MARKER STONE III	SO2140225518	MARKER STONE	Post Medieval
241032	CWM NANT-YR-YCHEN, MARKER STONE I	SO2068326963	MARKER STONE	Unknown



241033	CWM NANT-YR-YCHEN, STONE PILE	SO2070426969	STONE PILE	Unknown
241034	PEN GWYLLT MEIRCH RIDGE, QUARRY	SO2483625289	QUARRY	Unknown
241035	PEN GWYLLT MEIRCH RIDGE, SHOOTING STAND	SO2553924602	SHOOTING STAND	Post Medieval
241036	GELLI BOETH, SHEEP FOLD II	SO2465623448	SHEEP FOLD	Post Medieval
241037	NANT Y YCHEN, TRACKWAY	SO2451025239	TRACKWAY	Unknown
241038	CWM-FFRWD, SHEEP FOLD II	SO1928327654	SHEEP FOLD	Post Medieval
241039	CWM-FFRWD, SHEEP FOLD III	SO1945527776	SHEEP FOLD	Post Medieval
241040	CWM NANT-YR-YCHEN, MARKER STONE II	SO2100327040	MARKER STONE	Post Medieval
241041	MYNYDD LLYSIAU, MARKER STONE	SO2117327138	MARKER STONE	Post Medieval
241042	CWM NANT-YR-YCHEN, MARKER STONE III	SO2115026633	MARKER STONE	Post Medieval
241043	UPPER FFALD FAWR, CAIRN	SO2119026768	CAIRN	Unknown
241044	LOWER FFALD FAWR, TRACKWAY II	SO2192126886	TRACKWAY	Unknown
241045	LOWER FFALD FAWR, TRACKWAY III	SO2194726296	TRACKWAY	Post Medieval
241046	LOWER FFALD FAWR, FORD	SO2201126738	FORD	Post Medieval
241047	NANT Y COY, SHEEP FOLD II	SO2335224906	SHEEP FOLD	Post Medieval
241048	NANT Y FFIN, SHEEP FOLD II	SO2467923627	SHEEP FOLD	Post Medieval
241049	NANT Y FFIN, MARKER STONE II	SO2578323804	MARKER STONE	Post Medieval
241050	NANT Y FFIN, TRACKWAY II	SO2597123726	TRACKWAY	Post Medieval
241051	NANT Y YCHEN, AIR CRASH SITE	SO2435025348	AIR CRASH SITE	Modern
306283	DISGWYLFA, CAIRN	SO25972344	CAIRN	Unknown
404135	NANT YR YCHEN ROUND CAIRN	SO24762547	ROUND CAIRN	Prehistoric
92128	CRUG HYWEL CAMP	SO22552067	HILLFORT	Iron Age
306291	PEN CERRIG-CALCH, CAIRN I	SO21752223	CAIRN	Unknown
306292	PEN CERRIG-CALCH, CAIRN II	SO21652241	CAIRN	Unknown
306287	PEN ALLTMAWR, CAIRN I	SO20622385	CAIRN	Unknown
306278	PENTWYNGLAS, CAIRN	SO20102604	CAIRN	Bronze Age?
306282	PEN-Y-GADER FAWR, CAIRN	SO22942877	CAIRN	Bronze Age?
400896	LLWYN Y BRAIN DESERTED RURAL SETTLEMENT	SO27572310	DESERTED RURAL SETTLEMENT	Medieval;Post Medieval
400901	CWM BEUSYCH DESERTED RURAL SETTLEMENT	SO26192158	DESERTED RURAL SETTLEMENT;POND	Medieval;Post Medieval
400878	Y CWRT DESERTED RURAL SETTLEMENT	SO266214	HOUSE PLATFORM	Medieval;Post Medieval
306290	DARREN ENCLOSURE, POSSIBLE RINGCAIRN	SO21262136	ENCLOSURE	Unknown



306294	PEN GLOCH-Y-PIBWR, CAIRN I	SO20222324	CAIRN	Bronze Age
306288	PEN GLOCH-Y-PIBWR, CAIRN II	SO20282331	CAIRN	Unknown
306289	PEN ALLTMAWR, CAIRN II	SO20692433	CAIRN	Unknown
241052	CWM BANW, SETTLEMENT	SO2179624246	SETTLEMENT	Post Medieval
241053	CWM MAWR SOUTH, QUARRY XII	SO2047721123	QUARRY	Post Medieval
241054	NORTH CWM CUMBETH, SETTLEMENT	SO2165220779	SETTLEMENT	Prehistoric
241055	BLAEN NANT MAIR, SETTLEMENT	SO2666022395	SETTLEMENT	Post Medieval
241056	NANT Y GADAIR, SETTLEMENT	SO2170727906	SETTLEMENT	Medieval