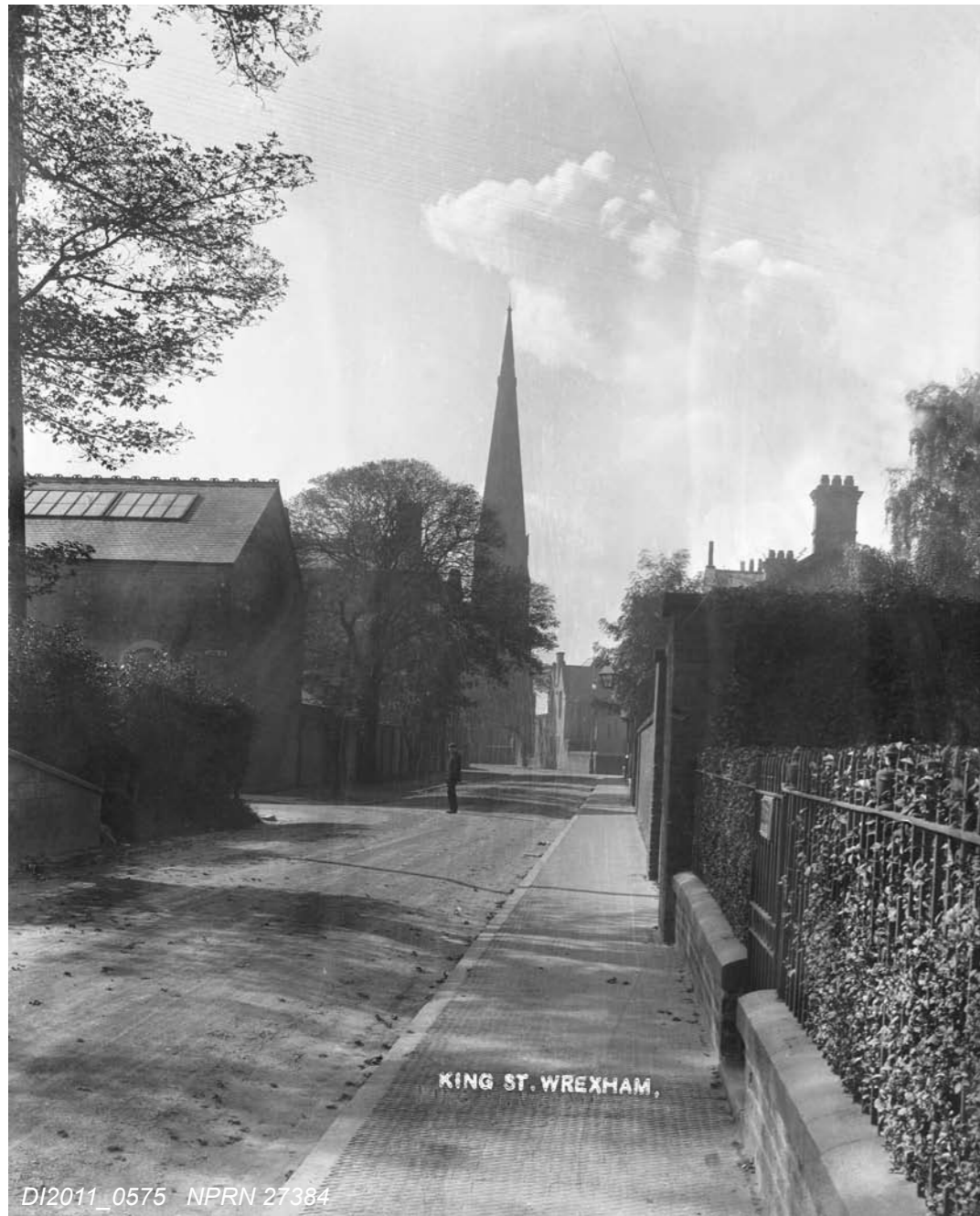




# Canol Tref Wrecsam


## Wrexham Town Centre



DI2011\_0575 NPRN 27354

Mae canol tref Wrecsam wedi newid cryn dipyn yn ystod ei hanes diweddar. Daw'r ffotograffau o Gasgliad Davies ac Aerofilms, a gellir cyrchu'r ddau gasgliad yn archif cyhoeddus y Comisiwn Brenhinol yn Aberystwyth – Cofnod Henebion Cenedlaethol Cymru ac ar-lein [www.coflein.gov.uk](http://www.coflein.gov.uk)


Wrexham Town Centre has seen considerable changes during its recent history. The photographs come from the Davies Collection and Aerofilms, both of which can be accessed at the Royal Commission's public archive in Aberystwyth - the National Monuments Record of Wales and on-line [www.coflein.gov.uk](http://www.coflein.gov.uk)

 Chwith: Stryt y Brenin, Wrecsam. Bellach, ar ochr chwith y ffordd y mae'r Orsaf Fysiau. Yn y cefndir mae eglwys Sant Marc, a dymchwelwyd ym 1959.


Left: King Street, Wrexham. The Bus Station now occupies the left hand side of the road. The parish church of St Mark, demolished in 1959, is in the background.



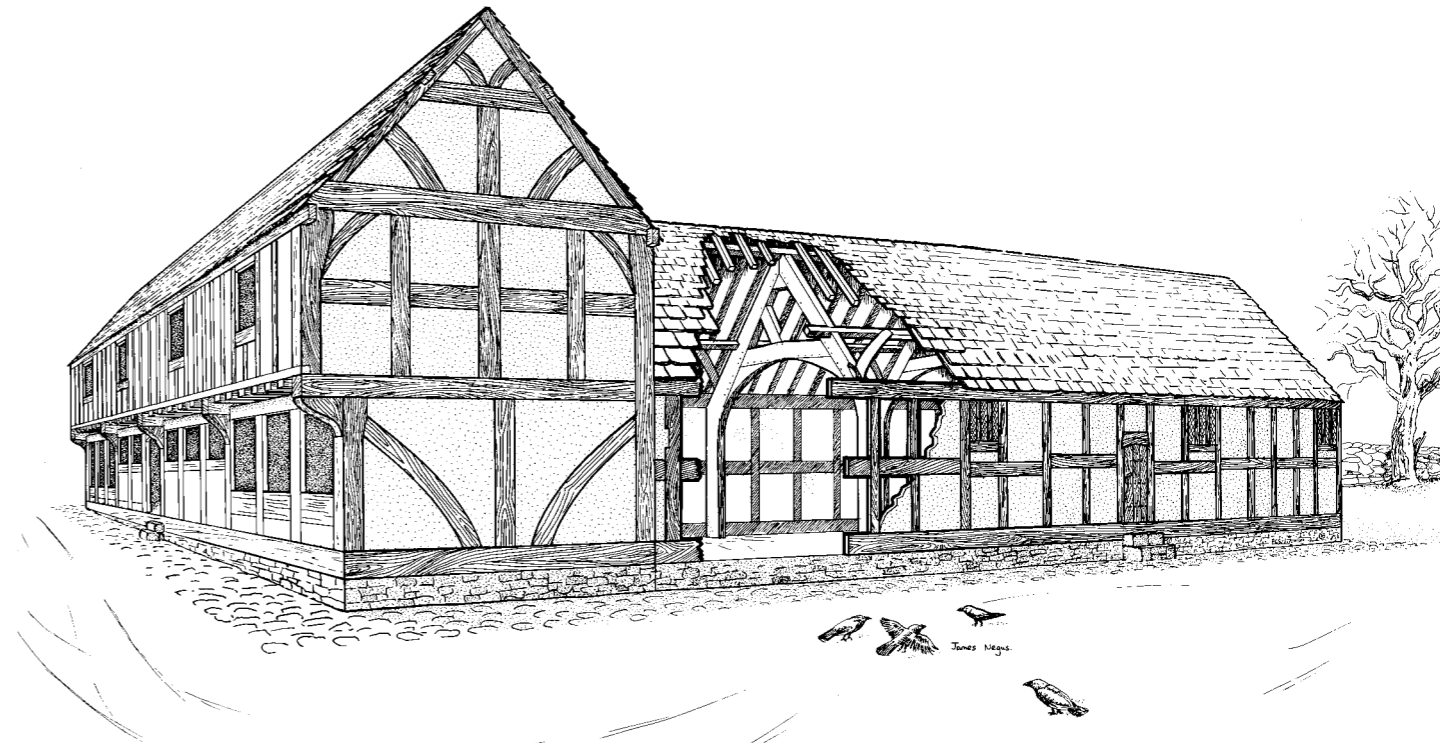
DI2011\_0574 NPRN 37538

 Chwith: Mount Street, Wrecsam, gan edrych at Eglwys Sant Silyn (eglwys y plwyf) a lein Rheilffordd Wrecsam ac Ellesmere ar y chwith. Caewyd y lein ym 1981 a dymchwelwyd y bont ar ôl hynny.

Left: Mount Street, Wrexham, looking towards St. Giles Parish Church, with the Wrexham & Ellesmere Railway line to the left. The line closed in 1981 and the bridge was subsequently demolished.

 Isod: Adluniad o 5-7a Town Hill, Wrecsam. Cofnodwyd yr adeilad ym 1988. Mae'n rhoi rhyw syniad o olwg llawer o adeiladau hynaf Wrecsam cyn yr ailddatblygu.

Below: A reconstruction of 5-7a Town Hill, Wrexham. The building was recorded in 1988. It gives an idea of how many of the older buildings of Wrexham looked before re-development.




DI2010\_2940 NPRN 27629

Isod: Ffotograff, a dynnwyd o dŵr Eglwys Sant Silyn, eglwys y plwyf, o gyffordd Church Street, Stryt-yr-Hôb, Town Hill a High Street.

Below: The junction of Church Street, Hope Street, Town Hill and High Street, photographed from the tower of St Giles Parish Church.



DI320973 NPRN 33102

 Uchod: Eglwys Sant Silyn, eglwys y plwyf, a'r rhwydwaith o strydoedd o'i hamgylch ym 1976. Erbyn hyn, Canolfan Siopa Eagles Meadow sydd ar y chwith yn rhan isaf y llun hwn.

Above: The parish church of St Giles and surrounding network of streets in 1976. Eagles Meadow Shopping Centre now occupies the lower left part of this photo.



DI2011\_0573 NPRN 33102