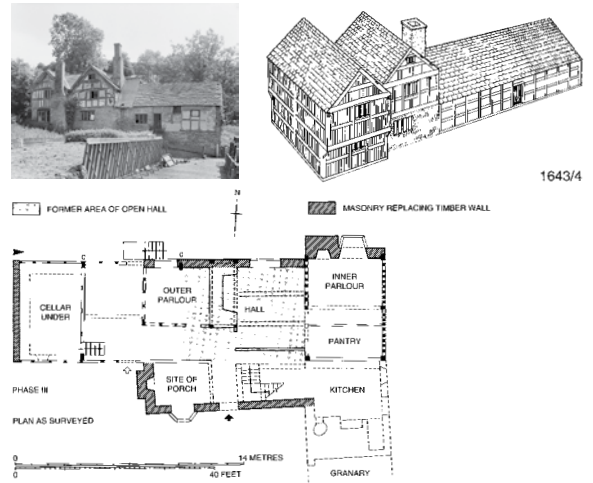
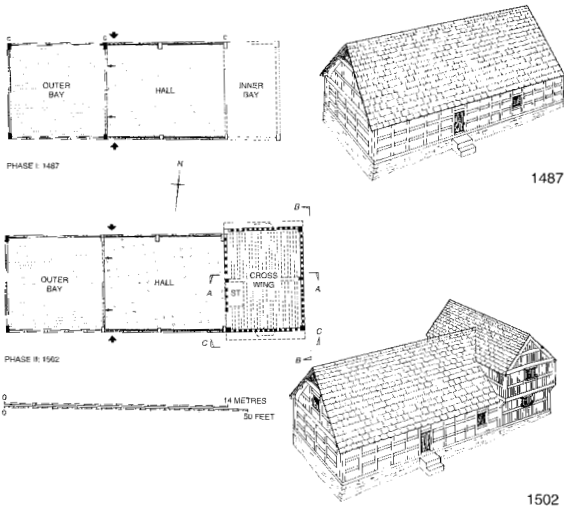


# DATBLYGIAD I Y TAI NEUADD HALL-HOUSE DEVELOPMENT I



Datblygodd tai neuadd mewn fyrdd cymhleth dros amser. Mae'r lluniadau isod yn dangos camau'r datblygiad yn y Burfa (yn Einsio). Dyddiwyd y camau hynny drwy ddendrocronoleg, sef:

- (1) llys bonheddwr, 1487;
- (2) croes-asgell heulol a ychwanegwyd ym 1502;
- (3) helaethu drwy ychwanegu bloc neuadd croes-dalcennog, 1643/4

Hall-houses developed over time in complex ways. The following drawings depict the phases of development at Burfa (Evenjobb) which have been dated by dendrochronology:

- (1) gentry hall-house, 1487;
- (2) solar cross-wing added in 1502;
- (3) enlargement with cross-gabled hall block, 1643/4

