

TEMPLE MINE GALLERY
PAGE 1

31st March / 1st April 2007
Photos by Graham Levins unless stated.



001) Dressing Floor - from above



004) Dressing Floor - from above



002) Dressing Floor - from above



005) Dressing Floor - from above



003) Dressing Floor - from above



006) Dressing Floor - from above

TEMPLE MINE GALLERY

PAGE 2



007) Dressing Floor - from above



010) Dressing Floor – wall at north west corner



008) 30ft x 4ft wheel-pit and base of incline (on the right hand side)



011) Dressing Floor – site of un-located buddle



009) Dressing Floor - looking north, rock-cut buddle in centre



012) Dressing Floor- rock-cut buddle

TEMPLE MINE GALLERY
PAGE 3



013) Dressing Floor- rock-cut buddle



*016) Dressing Floor – 14ft x 2ft
wheel-pit*



*014) Dressing Floor – 14ft x 2ft
wheel-pit*



*017) Dressing Floor – 14ft x 2ft
wheel-pit*



*015) Dressing Floor – 14ft x 2ft
wheel-pit*



*018) Dressing Floor – 14ft x 2ft
wheel-pit*

TEMPLE MINE GALLERY
PAGE 4



019) Dressing Floor – Survey in progress



022) Dressing Floor – wooden launder



020) Dressing Floor – location of wooden launder (centre of photograph)



023) Dressing Floor – wooden launder



021) Dressing Floor – wooden launder



024) Dressing Floor – wooden launder

TEMPLE MINE GALLERY
PAGE 5



025) Dressing Floor – wooden launder



028) Dressing Floor – wooden launder



026) Dressing Floor – wooden launder



029) Dressing Floor – 30ft x 4ft wheel-pit (looking south)



027) Dressing Floor – wooden launder



030) Dressing Floor – 30ft x 4ft wheel-pit (looking south)

TEMPLE MINE GALLERY
PAGE 6



031) Dressing Floor – 30ft x 4ft wheel-pit (looking east towards drain arch)



034) Dressing Floor – 30ft x 4ft wheel-pit (looking west)



032) Dressing Floor – 30ft x 4ft wheel-pit (detail of drain arch)



035) Dressing Floor – probable plinth for Blake's Stone Breaker (at west end of wheel-pit)



033) Dressing Floor – 30ft x 4ft wheel-pit (close up detail of drain arch)



036) Dressing Floor – probable plinth for Blake's Stone Breaker (at west end of wheel-pit)

TEMPLE MINE GALLERY
PAGE 7



037) Dressing Floor – probable plinth for Blake's Stone Breaker (at west end of wheel-pit)



040) Dressing Floor – Crushing Mill



038) Dressing Floor – looking south towards Crushing Mill



041) Dressing Floor – looking north towards ore bins from 30ft wheel-pit



039) Dressing Floor – Crushing Mill



042) Dressing Floors – Ore slide

TEMPLE MINE GALLERY

PAGE 8



043) Dressing Floors – ore slide



046) 40ft x 4ft wheel-pit – from river level, Deep Adit entrance on left



044) 40ft x 4ft wheel-pit – from river level



047) 40ft x 4ft wheel-pit – from river level



045) 40ft x 4ft wheel-pit – from river level



048) 40ft x 4ft wheel-pit – from river level, Deep Adit entrance on left

TEMPLE MINE GALLERY

PAGE 9



049) 40ft x 4ft wheel-pit – from river level, Deep Adit entrance on left



052) 40ft x 4ft wheel-pit – from river level (close up of damaged stone work)



050) 40ft x 4ft wheel-pit – from river level



053) 40ft x 4ft wheel-pit – from river level (close up of damaged stone work)



051) 40ft x 4ft wheel-pit – from river level



054) 40ft x 4ft wheel-pit – from river level (close up of damaged stone work)

TEMPLE MINE GALLERY

PAGE 10



055) 40ft x 4ft wheel-pit – from river level (close up of damaged stone work)



058) 40ft x 4ft wheel-pit – from river level (close up of damaged stone work)



056) 40ft x 4ft wheel-pit – from river level (close up of damaged stone work)



059) 40ft x 4ft wheel-pit – from tramway level



057) 40ft x 4ft wheel-pit – from river level (close up of damaged stone work)



060) 40ft x 4ft wheel-pit – from tramway level

TEMPLE MINE GALLERY
PAGE 11



061) 40ft x 4ft wheel-pit – from tramway level



064) 40ft x 4ft wheel-pit – from tramway level



062) 40ft x 4ft wheel-pit – from tramway level



065) 40ft x 4ft wheel-pit – from tramway level (Deep Adit entrance to right)



063) 40ft x 4ft wheel-pit – from tramway level



066) 40ft x 4ft wheel-pit – from tramway level

TEMPLE MINE GALLERY
PAGE 12



067) 40ft x 4ft wheel-pit – wheel compartment looking east



070) 40ft x 4ft wheel-pit – equipment compartments from south east corner



068) 40ft x 4ft wheel-pit – from tramway level (wheel compartment looking west)



071) 40ft x 4ft wheel-pit – drum pit on left, gearing pit on right



069) 40ft x 4ft wheel-pit –equipment compartments from south east corner



072) 40ft x 4ft wheel-pit – gearing pit on left, drum pit on right

TEMPLE MINE GALLERY
PAGE 13



073) 40ft x 4ft wheel-pit drum pit



076) Deep Adit - entrance



074) 40ft x 4ft wheel-pit gearing pit on left, drum pit on right



077) Deep Adit – entrance, looking in (west)



075) 40ft x 4ft wheel-pit – north east corner, compressor mounting base on right



078) Deep Adit – entrance, looking out (east)

TEMPLE MINE GALLERY

PAGE 14



079) Deep Adit – pump-rod support



*082) Deep Adit – flooded passage
(looking west)*



080) Deep Adit – pump-rod support



*083) Deep Adit – tramway rails in situ
(looking west)*



*081) Deep Adit – flooded passage
(looking west)*



*084) Deep Adit – looking into shaft
chamber (west)*

TEMPLE MINE GALLERY
PAGE 15



085) Deep Adit – shaft chamber looking west



088) Deep Adit – pump-rod angle piece



086) Deep Adit - shaft chamber looking west, pump-rod on right



089) Deep Adit – pump-rod angle piece



087) Deep Adit – pump-rod angle piece



090) Deep Adit – pump-rod upright

TEMPLE MINE GALLERY
PAGE 16



091) Deep Adit - pump-rod upright



094) Deep Adit - shaft headgear looking east



092) Deep Adit - shaft headgear looking west



095) Deep Adit - shaft headgear looking east



093) Deep Adit - shaft headgear looking west



096) Deep Adit - shaft headgear looking east

TEMPLE MINE GALLERY
PAGE 17



097) Deep Adit – shaft headgear looking east



100) Deep Adit – shaft headgear (close up), rising main on right



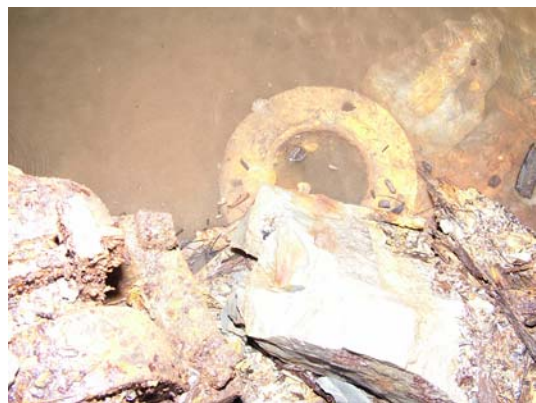
098) Deep Adit – shaft headgear (close up) looking east



101) Deep Adit – remains on floor



099) Deep Adit – shaft headgear (close up) looking east



102) Deep Adit – rising main

TEMPLE MINE GALLERY
PAGE 18



103) Deep Adit – Stopes above shaft looking east



106) –Temple Mine viewed from top of path from Ysbyty Cynfyn



104) Deep Adit – Stopes above shaft looking east



107) Temple Mine – inclined tramway route (centre) viewed from path from Ysbyty Cynfyn



105) –Temple Mine viewed from top of path from Ysbyty Cynfyn



108) Temple Mine – inclined tramway route (centre) viewed from path from Ysbyty Cynfyn

TEMPLE MINE GALLERY
PAGE 19



109) Blacksmith's building in field at top of inclined tramway [photo Nigel Chapman]