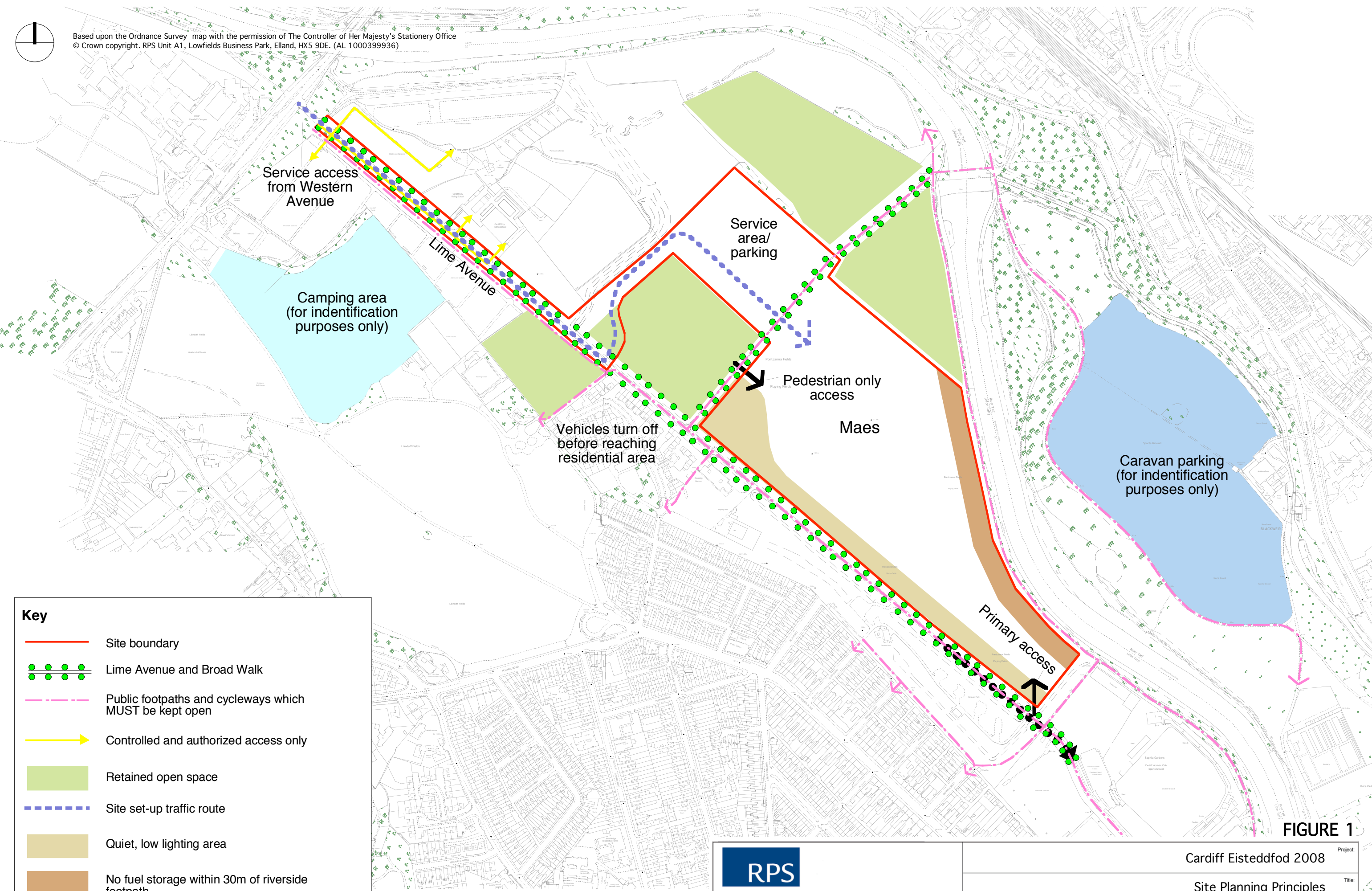


Based upon the Ordnance Survey map with the permission of The Controller of Her Majesty's Stationary Office  
© Crown copyright. RPS Unit A1, Lowfields Business Park, Eland, HX5 9DE. (AL 1000399936)



**Key**

- Site boundary
- Lime Avenue and Broad Walk
- Public footpaths and cycleways which MUST be kept open
- Controlled and authorized access only
- Retained open space
- Site set-up traffic route
- Quiet, low lighting area
- No fuel storage within 30m of riverside footpath
- Park and Ride drop off at Sophia Close

**FIGURE 1**

			Cardiff Eisteddfod 2008		Project:
			Site Planning Principles		Title:
Date: 29/8/07	Scale: 1:5000	Rev:	Client Cardiff County Council		JCC 7142:01
Job No JCC 7142	Drawn:	Checked: SW			
www.rpsgroup.com					